

PROCLAMATIONS

AA101

RIGHTS IN WATER AND IRRIGATION ACT 1914

PROCLAMATION

WESTERNAUSTRALIA
P. M. Jeffery,
Governor.
[L.S.]

} By His Excellency Major General Philip Michael
Jeffery, Companion of the Order of Australia, Officer
of the Order of Australia (Military Division), Military
Cross, Governor of the State of Western Australia.

I, the Governor, acting under section 6 (3) of the Rights in Water and Irrigation Act 1914, on the recommendation of the Minister and with the advice and consent of the Executive Council, declare that Division 1 of Part III of that Act applies and has effect in relation to any water-course, lake, lagoon, swamp or marsh situated within the following portions of the State, namely—

- (a) the area known as Bolganup Creek Surface Water Area contained within the border—
 - (i) outlined on plan WRC1197-1-1 held by the Water and Rivers Commission at its offices at 3 Plain Street, East Perth; and
 - (ii) defined by straight lines connecting the Australian Map Grid coordinates for zone 50 specified on the annexure to the plan and extending along those coordinates in a clockwise direction from the first coordinate back to that coordinate,
 which area is represented for information purposes in the plan in Schedule 1;
- (b) the area known as Canning Dam Surface Water Area contained within the border—
 - (i) outlined on plan WRC13-1-1 held by the Water and Rivers Commission at its offices at 3 Plain Street, East Perth; and
 - (ii) defined by straight lines connecting the Australian Map Grid coordinates for zone 50 specified on the annexure to the plan and extending along those coordinates in a clockwise direction from the first coordinate back to that coordinate,
 which area is represented for information purposes in the plan in Schedule 2;
- (c) the area known as Churchman's Brook Surface Water Area contained within the border—
 - (i) outlined on plan WRC9-1-1 held by the Water and Rivers Commission at its offices at 3 Plain Street, East Perth; and
 - (ii) defined by straight lines connecting the Australian Map Grid coordinates for zone 50 specified on the annexure to the plan and extending along those coordinates in a clockwise direction from the first coordinate back to that coordinate,
 which area is represented for information purposes in the plan in Schedule 3;
- (d) the area known as Limeburner's Creek Surface Water Area contained within the border—
 - (i) outlined on plan WRC1199-1-1 held by the Water and Rivers Commission at its offices at 3 Plain Street, East Perth; and
 - (ii) defined by—
 - (I) straight lines connecting the Australian Map Grid coordinates for zone 50 specified on the annexure to the plan and extending along those coordinates in a clockwise direction from the first coordinate to the final coordinate; and
 - (II) a line commencing at the final coordinate and following the high water mark of the coastline back to the first coordinate,
 which area is represented for information purposes in the plan in Schedule 4;
- (e) the area known as Mundaring Weir Surface Water Area contained within the border—
 - (i) outlined on plan WRC11-1-1 held by the Water and Rivers Commission at its offices at 3 Plain Street, East Perth; and
 - (ii) defined by straight lines connecting the Australian Map Grid coordinates for zone 50 specified on the annexure to the plan and extending along those coordinates in a clockwise direction from the first coordinate back to that coordinate,
 which area is represented for information purposes in the plan in Schedule 5;
- (f) the area known as Victoria Dam Surface Water Area contained within the border—
 - (i) outlined on plan WRC10-1-1 held by the Water and Rivers Commission at its offices at 3 Plain Street, East Perth; and
 - (ii) defined by straight lines connecting the Australian Map Grid coordinates for zone 50 specified on the annexure to the plan and extending along those coordinates in a clockwise direction from the first coordinate back to that coordinate,
 which area is represented for information purposes in the plan in Schedule 6; and
- (g) the area known as Wungong Dam Surface Water Area contained within the border—
 - (i) outlined on plan WRC12-1-1 held by the Water and Rivers Commission at its offices at 3 Plain Street, East Perth; and
 - (ii) defined by straight lines connecting the Australian Map Grid coordinates for zone 50 specified on the annexure to the plan and extending along those coordinates in a clockwise direction from the first coordinate back to that coordinate,
 which area is represented for information purposes in the plan in Schedule 7.

The plans and annexures referred to in this proclamation were produced to me at the time of the making of this proclamation and are certified by the Clerk of the Council for the purpose of identification.

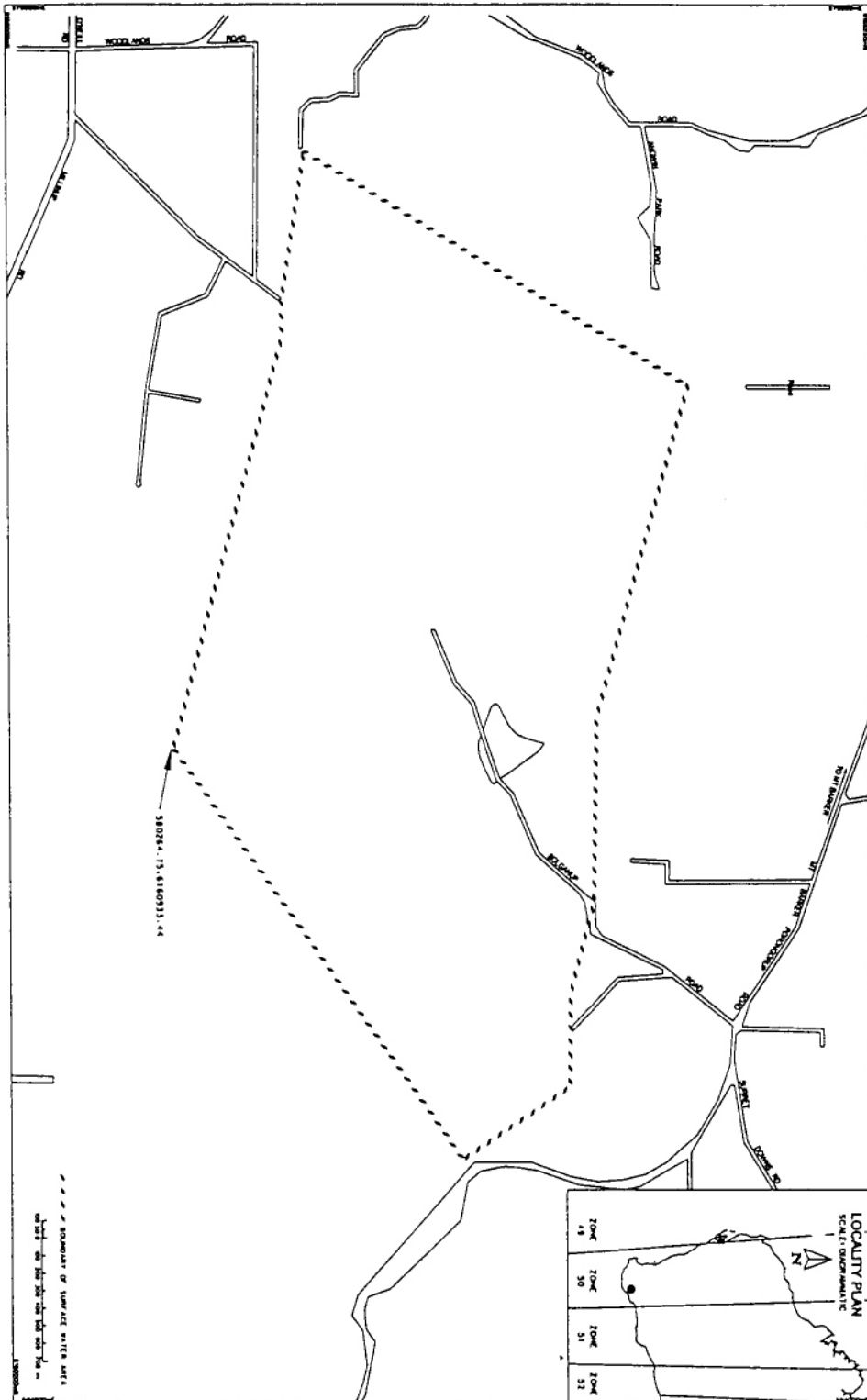
Given under my hand and the Public Seal of the State on 31 December 1996.

By His Excellency's Command,

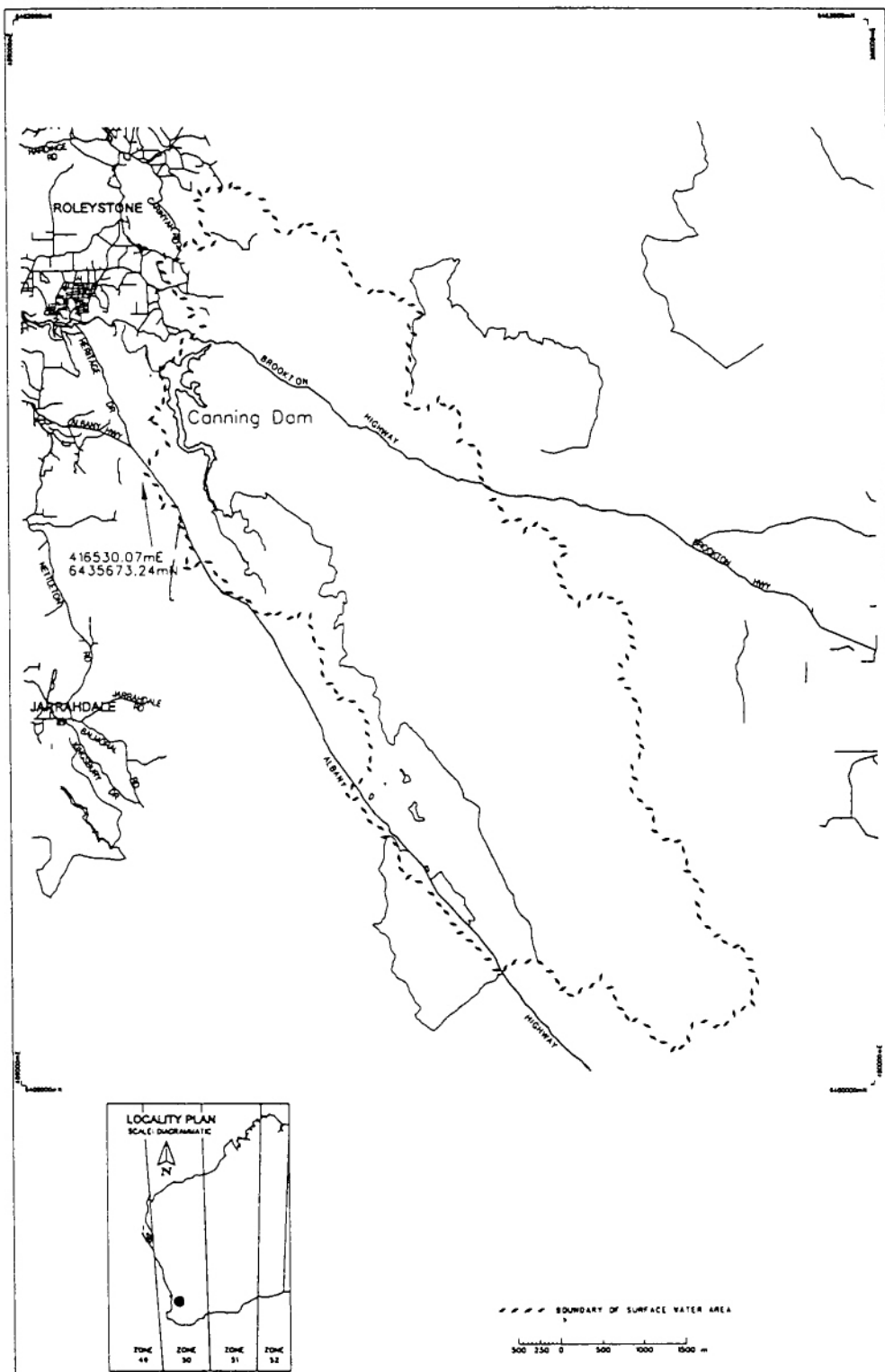
R. K. NICHOLLS, Minister for Water Resources.

GOD SAVE THE QUEEN !

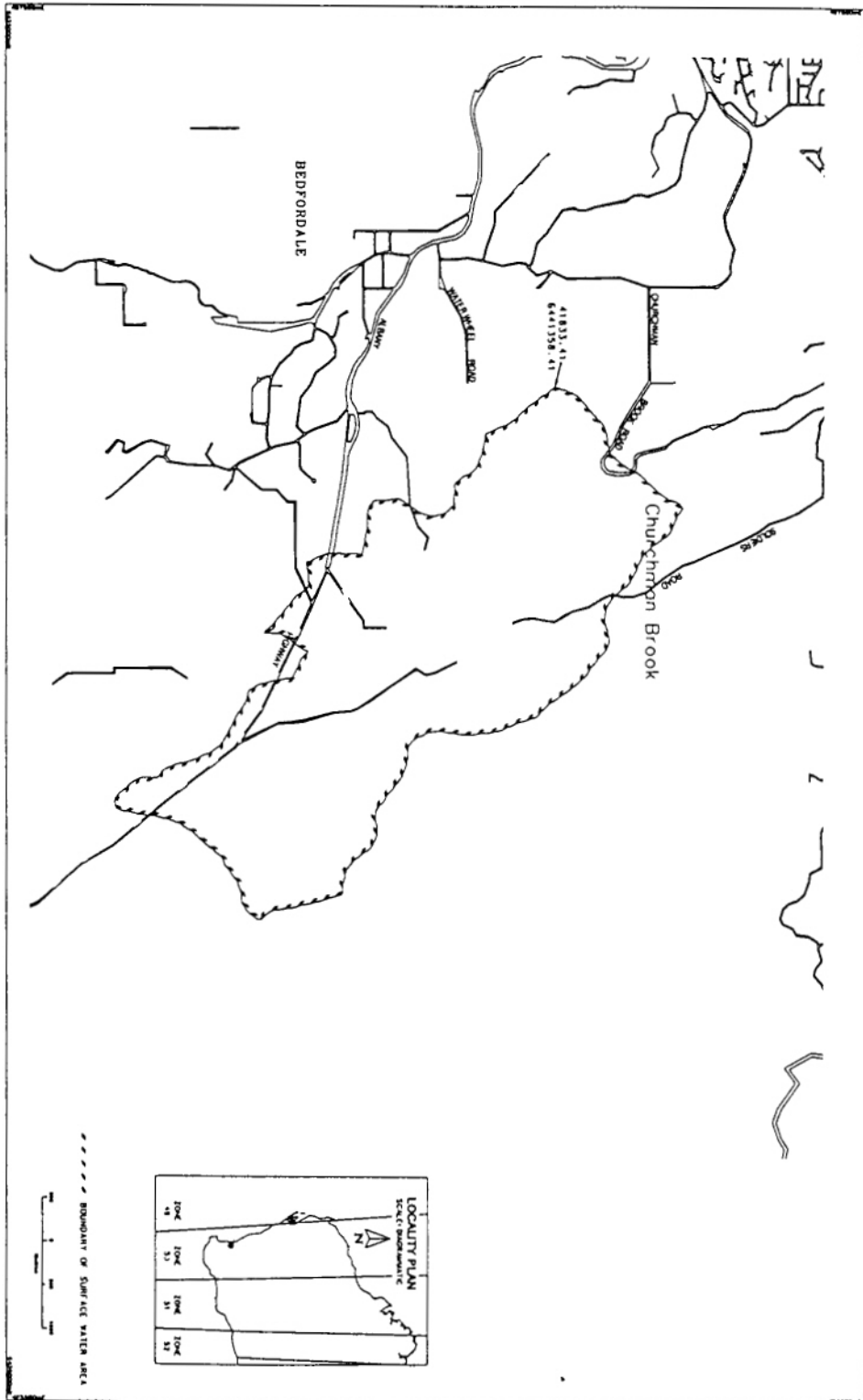
SCHEDULE 1—BOLGANUP SURFACE WATER AREA



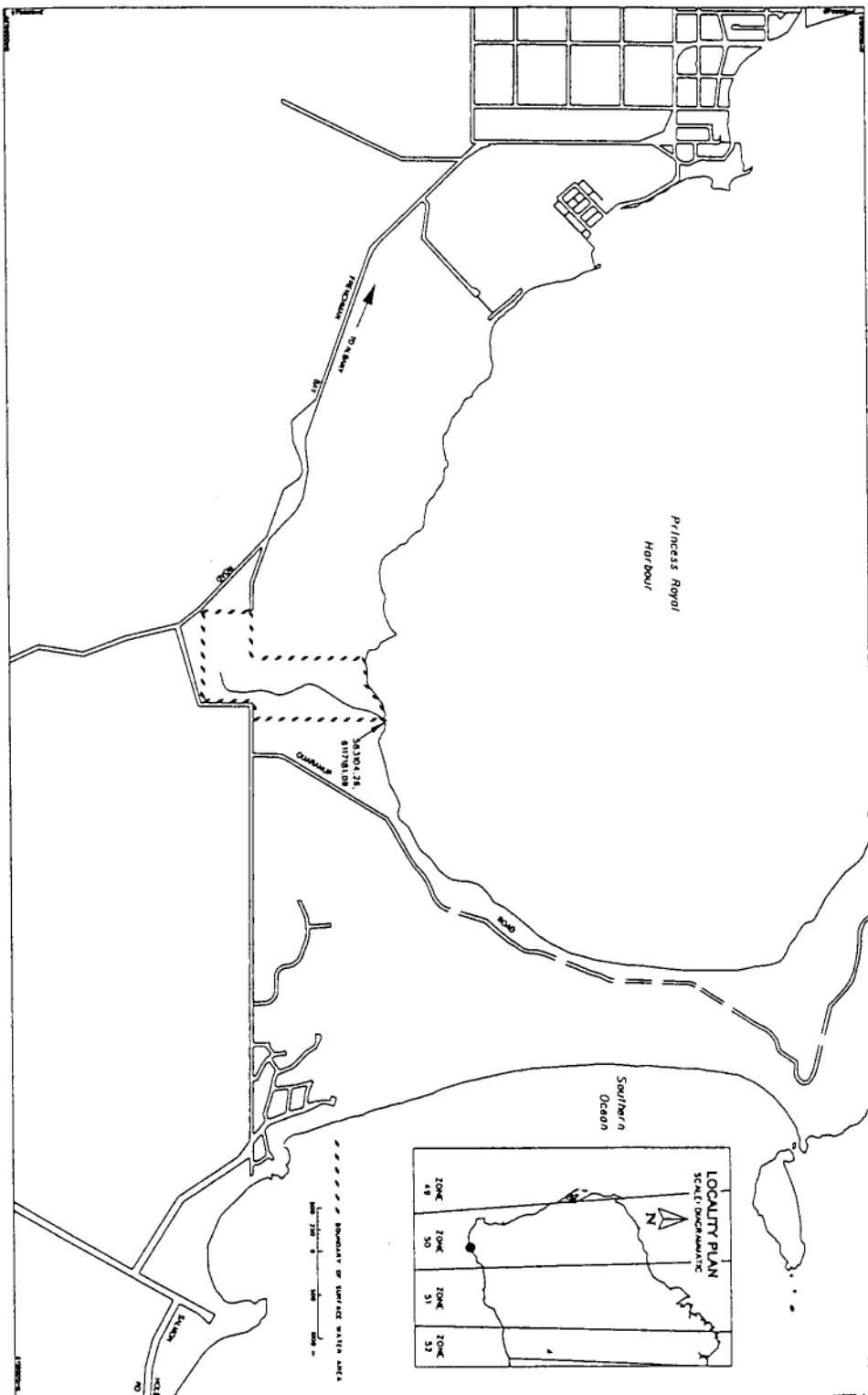
SCHEDULE 2—CANNING DAM SURFACE WATER AREA



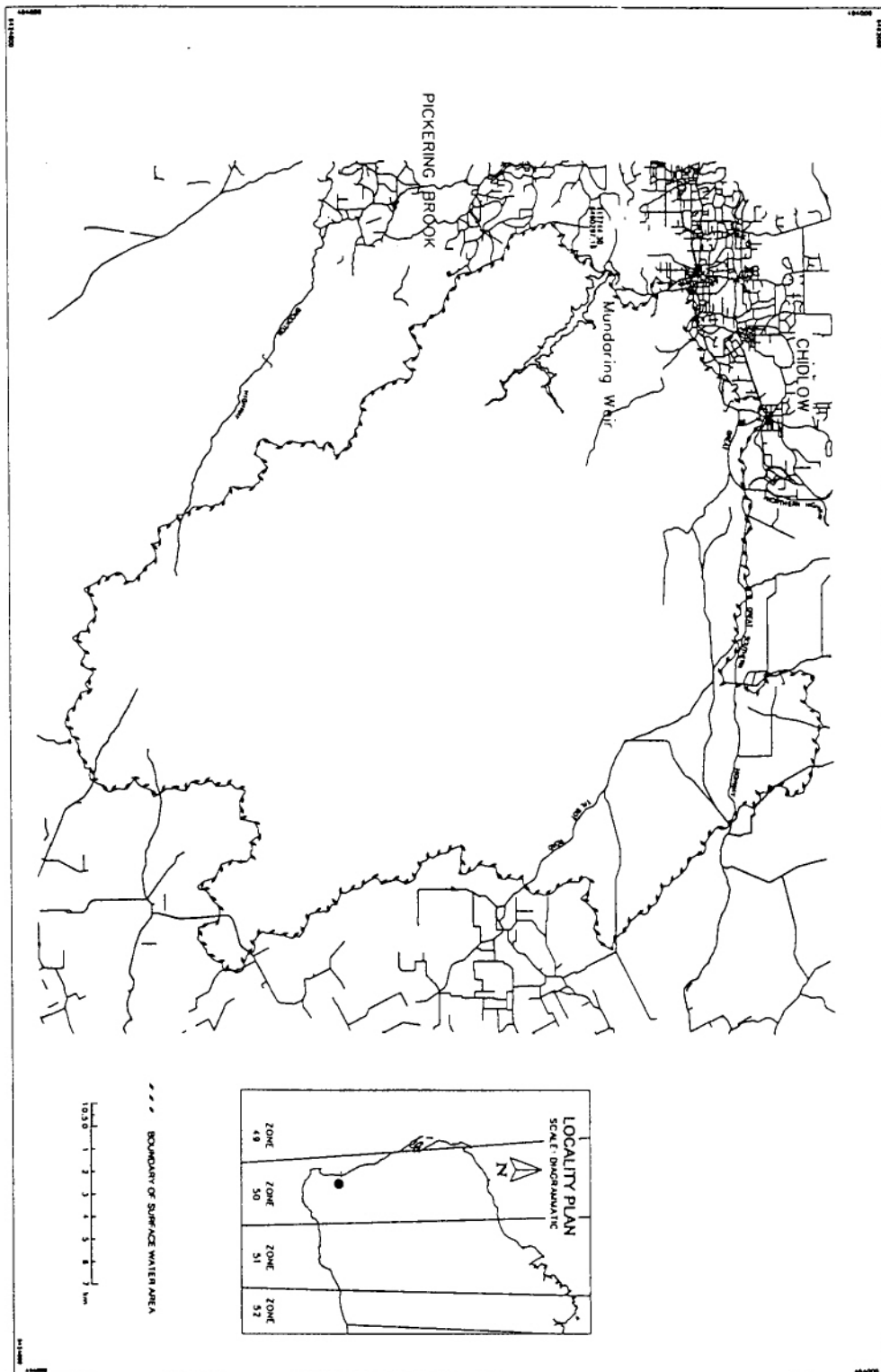
SCHEDULE 3—CHURCHMAN'S BROOK SURFACE WATER AREA



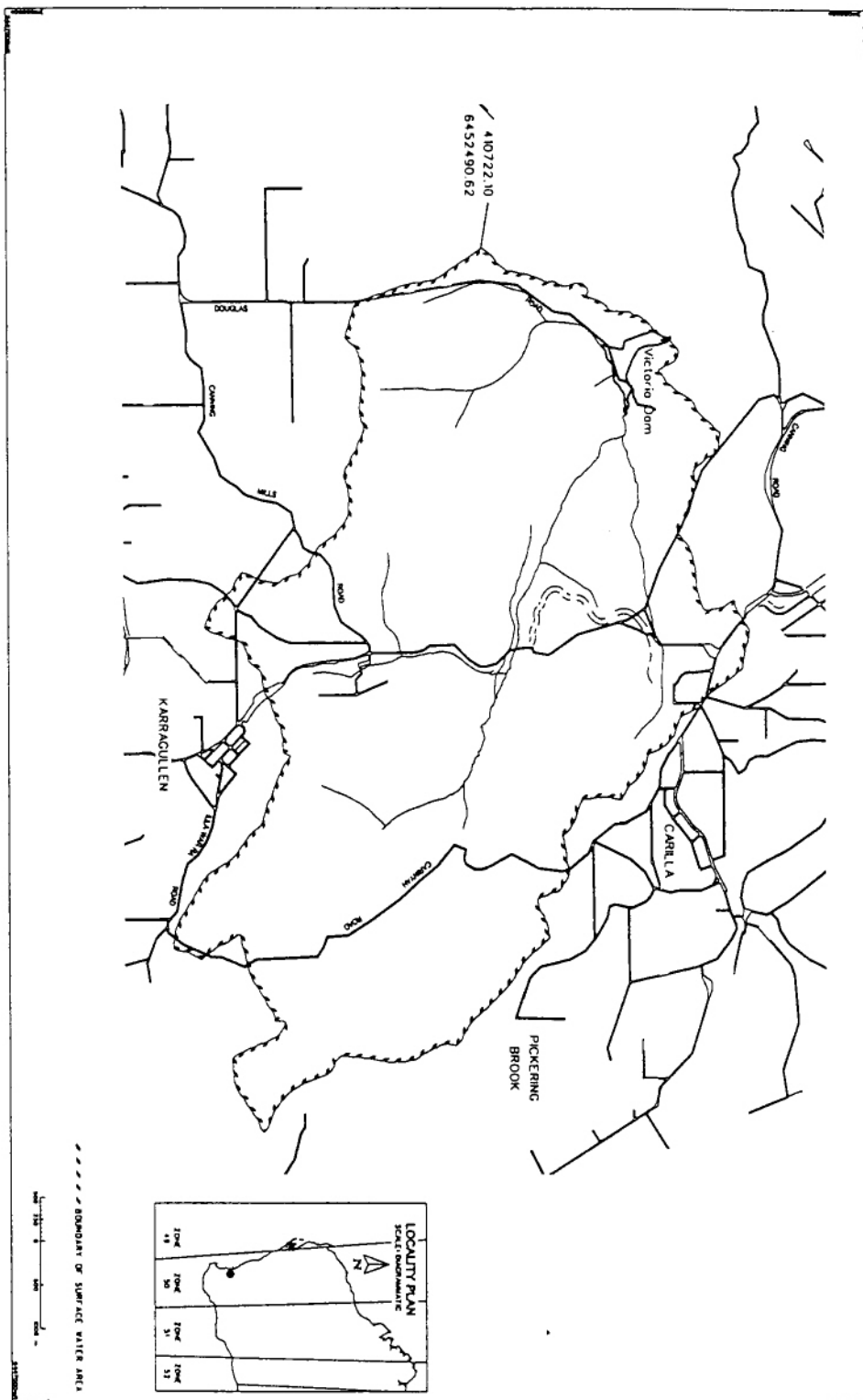
SCHEDULE 4—LIMEBURNER'S CREEK SURFACE WATER AREA



SCHEDULE 5—MUNDARING WEIR SURFACE WATER AREA



SCHEDULE 6—VICTORIA DAM SURFACE WATER AREA



SCHEDULE 7—WUNGONG SURFACE WATER AREA

