



# Government Gazette

OF

## WESTERN AUSTRALIA.

(Published by Authority at 2.30 p.m.)

[REGISTERED AT THE GENERAL POST OFFICE, PERTH, FOR TRANSMISSION BY POST AS A NEWSPAPER.]

No. 47.]

PERTH : FRIDAY, 8th JUNE

[1956.

### TRAFFIC ACT, 1919-1954.

Broome Road Board.

One Way Traffic By-law.

L.G. 1318/52.

PURSUANT to an Order in Council made under section 49 of the Traffic Act, 1919-1954, and in exercise of the powers thereby conferred, the Broome Road Board doth hereby make the following by-law to have effect in the Broome Road District.

One Way Traffic.

Broome Townsite.

No person shall at any time drive or ride a vehicle or an animal on that portion of Carnarvon Street bounded by Napier Terrace and Short Street except in a Northerly direction, nor in Short Street bounded by Carnarvon Street and Dampier Terrace except in an Easterly direction; nor in Dampier Terrace bounded by Short Street and Napier Terrace, except in a Southerly direction; nor in Napier Terrace bounded by Dampier Terrace to a distance of approximately 250 links except in a Westerly direction.

Made and passed by the Broome Road Board on the 13th day of April, 1956.

A. S. MALE,  
Chairman.

O. W. McMICHAEL,  
Secretary.

Recommended—

(Sgd.) G. FRASER,  
Minister for Local Government.

Approved by His Excellency the Governor in Executive Council, this 23rd day of May, 1956.

(Sgd.) E. P. FOREMAN,  
Acting Clerk of the Council.

## CEMETERIES ACT, 1897-1955.

Rockingham Public Cemetery.

Department of Local Government,  
Perth, 28th May, 1956.

L.G. 809/53.

HIS Excellency the Governor in Executive Council, acting under the provisions of the Cemeteries Act, 1897-1955, has been pleased to approve of the amendment in the manner mentioned in the Schedule hereunder, by the Rockingham District Road Board of the by-laws made under the provisions of the Act for the control and management of the Public Cemetery, Rockingham, and published in the *Government Gazette* on the 20th day of February, 1948.

GEO. S. LINDSAY,  
Secretary for Local Government.

## Schedule.

The abovementioned by-laws are amended by substituting for Schedule A the following:—

## Schedule A.

## SCALE OF FEES AND CHARGES PAYABLE TO THE TRUSTEES.

On application for an "Order for Burial," the following fees shall be payable in advance:—

	£	s.	d.
<b>In Open Ground—</b>			
For sinking grave for any adult ....	2	10	0
For sinking grave for any child under seven years ....	2	0	0
For re-opening grave for any adult ....	2	0	0
For re-opening grave for any child under seven years ....	2	0	0
For iron number plate ....	5	0	0
<b>In Private Ground—</b>			
For sinking grave for any adult ....	2	10	0
For sinking grave for any child under seven years ....	2	0	0
For re-opening grave for any adult ....	2	0	0
For re-opening grave for any child under seven years ....	2	0	0
For iron number plate ....	5	0	0
<b>Issue of a Grant of "Right of Burial"—</b>			
Ordinary land for grave, 8ft. x 4ft., where directed ....	2	2	0
Ordinary land for grave, 8ft. x 8ft., where directed ....	4	4	0
Special land for grave, 8ft. x 4ft., selected by applicant in section where burials take place ....	2	2	0
Special land for grave, 8ft. x 8ft. ....	5	0	0
For interment without due notice ....	10	6	0
For sinking any adult's grave beyond 6ft., for each additional foot ....	12	6	0
For permission to erect any monument, etc. ....	10	0	0
For permission to construct a brick grave ....	1	0	0
For permission to construct a vault ....	1	10	0
Undertaker's General License ....	2	2	0
Undertaker's Special License ....	10	6	0
For copy of "Grant of Right of Burial" ....	2	6	0

## ROAD DISTRICTS ACT, 1919-1954.

Merredin Road Board.

Amendments to Building By-laws.

L.G. 897/52.

THE Building By-laws of the Merredin Road Board as published in the *Government Gazette* of the 24th April, 1952, are hereby amended as follows:—

1. By adding a new by-law 29A as follows:—

## Car Ports.

29A. Car ports or car shelters of pergola type comprising semi-flat roof supported by posts or columns but without walls, shall be in accordance with the following requirements, and, subject to the Board's

approval of the location by resolution at any ordinary meeting, may be constructed at a lesser distance from any boundary of the allotment than required for building having walls.

Supporting posts or columns shall be at least equal to the following:

Timber (jarrah, dressed)—4in. x 4in.  
Steel piping—2in. diameter and  $\frac{1}{2}$ in. thickness.  
Erickworks or masonry—9in. x 9in.  
Concrete—6in. x 6in. reinforced.

Columns of brickwork, masonry or concrete shall not be greater in width than 18in.

The space between posts or columns shall not be less than 6ft. and shall not be filled or held in with any material.

#### Roof Structure.

Plates or beams shall not be less than 6in. x 2in. jarrah (dressed). Purlins shall be spaced at not more than 3ft. centre to centre and shall be at least equal to the following:—

Spans up to 9ft.—4in. x 2in.  
Spans 9ft. to 12ft.—5in. x 2in.  
Spans over 12ft.—6in. x 2in.

Or, alternatively, 2in. pipe welded or bolted to supporting iron posts with side reinforcements in such manner that unsupported section would be not more than 4ft. Purlins to be bolted to the iron beams.

The roof shall be constructed with a fall of at least 3in. in 12ft. and such fall shall not be in direction of any adjoining boundary fence of the allotment unless such fence is at least 3ft. from the outer edge of the roof. The roof shall be provided with spouting and downpiping and water from the roof shall not be permitted to discharge on to adjoining land not in the same possession.

The roof covering may be of galvanised, corrugated or plain iron; corrugated or flat asbestos, tempered hardboard or timber sheeted with bituminous roofing felt or other approved roofing materials.

No part of the structure shall project beyond any boundary of the allotment.

Where a car port is attached to an existing building, it shall be supported from a pitching plate of at least 4in. x 2in. jarrah which shall be bolted to the wall with  $\frac{1}{2}$ in. diameter bolts at least every 3ft.

The height above ground level of any part of roof structure shall be at least 6ft.

Passed by resolution of the Board at a meeting of the Board held on the 8th day of May, 1956.

C. R. DAVIES,  
Chairman.  
F. A. LAW,  
Secretary.

Recommended—

(Sgd.) G. FRASER,  
Minister for Local Government.

Approved by His Excellency the Governor in Executive Council, this 23rd day of May, 1956.

E. P. FOREMAN,  
Acting Clerk of the Council.

### MUNICIPAL CORPORATIONS ACT, 1906-1954.

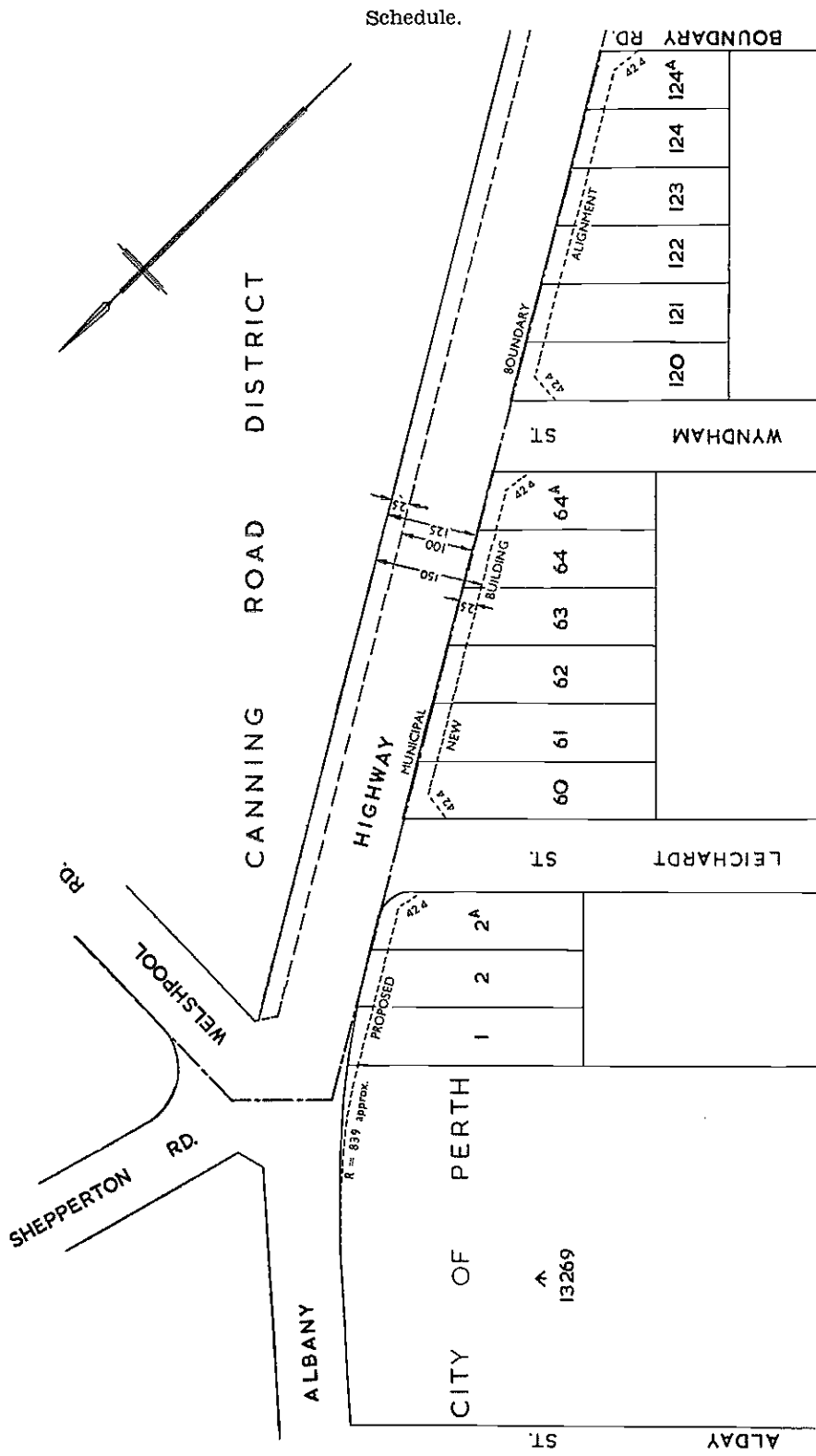
City of Perth.

By-law No. 57 (Building Line).

L.G. 2123/52.

A BY-LAW of the Municipality of the City of Perth made under the provisions of the Municipal Corporations Act, 1906-1954 and the City of Perth Act, 1925-1926, and numbered 57, for the provision of a new building line.

In pursuance of the powers conferred by the Municipal Corporations Act, 1906-1954, and the City of Perth Act, 1925-1926, the Lord Mayor and Councillors of the City of Perth hereby prescribe a new building line on the southern side of Albany Highway between Boundary Road and the prolongation of Welshpool Road, as shown in the plan on the schedule hereto.



Passed by the Council of the City of Perth at the ordinary meeting of Council held on the 13th day of February, 1956.

[L.S.]

H. R. HOWARD,  
Lord Mayor.

W. A. McI. GREEN,  
Town Clerk.

Recommended—

(Sgd.) E. K. HOAR,  
Acting Minister for Local Government.

Approved by His Excellency the Governor in Executive Council, this 9th day of May, 1956.

(Sgd.) R. H. DOIG,  
Clerk of the Council.

#### COAL MINES REGULATION ACT, 1946-1951.

Department of Mines,  
Perth, 6th June, 1956.

HIS Excellency the Governor in Executive Council, under the provisions of the Coal Mines Regulation Act, 1946-1951, has been pleased to make the regulations set out in the Schedule hereunder.

A. H. TELFER,  
Under Secretary for Mines.

#### Schedule. Regulations.

1. The regulations and general rules made under the Coal Mines Regulation Act, 1946-1951, and published in the *Government Gazette* on the 19th September, 1947, and amended from time to time thereafter by notices published in the *Government Gazette* are referred to in these regulations as the principal regulations.

2. Regulation 16 of the principal regulations is amended by substituting for subregulation (2) the following subregulation:—

(2) Subject to the approval of the Minister, officers engaged on the scrutiny and count of votes may be paid fees as follows:—

	£	s.	d.
Returning officers or deputy returning officers—for every 100 votes counted .....	1	4	
Presiding officers and poll clerks—per hour .....	10	0	

#### MINES REGULATION ACT, 1946-1954.

Department of Mines,  
Perth, 6th June, 1956.

HIS Excellency the Governor in Executive Council, under the provisions of the Mines Regulation Act, 1946-1954, has been pleased to make the regulations set out in the Schedule hereunder.

A. H. TELFER,  
Under Secretary.

#### Schedule. Regulations.

1. The Mines Regulation Act Regulations made under the Mines Regulation Act, 1946-1954, and published in the *Government Gazette* on the 4th April, 1949, and amended from time to time thereafter by notices published in the *Government Gazette* are referred to in these regulations as the principal regulations.

2. Regulation 21 of the principal regulations is amended by substituting for subregulation (2) the following subregulation:—

(2) Subject to the approval of the Minister, officers engaged on the scrutiny and count of votes may be paid fees as follows:—

	£	s.	d.
Returning officers or deputy returning officers—for every 100 votes counted	1	4	
Presiding officers and poll clerks—per hour	10	0	

FREMANTLE HARBOUR TRUST ACT, 1902-1954.

Amendments to Regulations.

Ex. Co. No. 856.

THE Fremantle Harbour Trust Commissioners, acting pursuant to section 65 of the Fremantle Harbour Trust Act, 1902-1954, do hereby amend the regulations made by them and published in the *Government Gazette* on the 17th day of June, 1955, in the manner mentioned in the Schedule hereunder:—

Schedule.

The abovementioned regulations are amended as follows:—

(1) By revoking regulation No. 50, including the paragraph under the subheading "Re-enactment of Regulation."

(2) By revoking regulation No. 85.

(3) By deleting from regulation No. 109 the words "other than whale chasing vessels as provided herein," and by deleting the symbols and figures "2½d.," "£2 10s." and "£15" where appearing in paragraph (a) (i), and by inserting in lieu thereof the symbols and figures "3d.," "£3 10s." and "£20" respectively.

(4) By deleting paragraph (a) (ii) of regulation No. 109.

(5) By deleting from paragraph (b) of regulation No. 109 the symbols and figures "£7 10s." and by inserting in lieu thereof the symbol and figure "£10."

(6) By deleting from paragraph (c) of regulation No. 109 the word and brackets "(Rockingham)" and by substituting for the symbols and figures "£12 10s." the following:—

3d. per ton of Gross Tonnage.

	Each Service.		
	£	s.	d.
Minimum charge	6	10	0
Maximum Charges—			
Vessels up to 5,000 tons gross	20	0	0
Vessels over 5,000 tons and up to 10,000 tons gross	23	0	0
Vessels over 10,000 tons and up to 20,000 tons gross	25	0	0
Vessels over 20,000 tons gross	26	10	0

(7) By deleting regulation No. 110 and by inserting in lieu thereof the following:—

No. 110.

(a) *Inner Harbour Pilotage*.—The charges for pilotage of vessels from Gage Roads to Inner Harbour, or *vice versa*, shall be as follows:—

"3d. per ton of Gross Tonnage."

	Each Service.		
	£	s.	d.
Minimum charge	6	10	0
Maximum Charges—			
Vessels up to 5,000 tons gross	20	0	0
Vessels over 5,000 tons and up to 10,000 tons gross	23	0	0
Vessels over 10,000 tons and up to 20,000 tons gross	25	0	0
Vessels over 20,000 tons gross	26	10	0

(b) *Inner Harbour Removals*.—The charges for pilotage upon any removal of vessels within the Inner Harbour shall be as follows:—

	Each Service.		
	£	s.	d.
All Vessels as under—			
Under 500 tons gross	2	10	0
500 tons and under 1,000 tons gross	3	10	0
1,000 tons and under 2,000 tons gross	4	0	0
2,000 tons and under 3,000 tons gross	4	10	0
3,000 tons and under 5,000 tons gross	5	10	0
5,000 tons and under 7,500 tons gross	6	0	0
7,500 tons and under 10,000 tons gross	7	10	0
10,000 tons gross and over	9	0	0

(8) By deleting from regulation No. 111 the figures and symbols "10s."—"£5,"—"£10" in the regulation, and by inserting in lieu thereof the symbols and figures "15s."—"£6 10s."—"£13 10s." respectively.

(9) By deleting from regulation No. 113 the figure and symbol "10s." where twice appearing in the regulation, and the symbol and figure "£3" where appearing in paragraph (c) of the regulation, and by inserting in lieu thereof the symbols and figures "15s."—"£4" respectively.

(10) (i) By deleting the word "twenty-fourth" where appearing on the first line of paragraph (a) of regulation No. 135, and by deleting the word "twelve" where appearing in line four of the same paragraph, and by inserting in lieu thereof the words "twelfth" and "six" respectively.

(ii) By deleting from paragraph (b) of regulation 135 the word "twelve" (twice appearing) and by inserting in lieu thereof in both places the word "six."

(11) By deleting from regulation No. 136 the figures and symbols "£2 10s."—"15s."—"10s." and by inserting in lieu thereof the figures and symbols "£3"—"£1"—"12s." respectively.

(12) By deleting from regulation No. 137 the word "twelve" and by inserting in lieu thereof the word "six."

(13) By deleting the figure and symbol "10s." where appearing on the last line of regulation No. 139, and by inserting in lieu thereof the figure and symbol "12s."

(14) By deleting the symbols and figures "£2 10s." and "£10" where appearing in regulation No. 140, and by inserting in lieu thereof the symbols and figures "£3" and "£12" respectively.

(15) (i) By substituting for the word "All" where appearing in line one of regulation No. 147 the words "Subject to regulation No. 150A, all."

(ii) By deleting paragraph No. 1 of regulation No. 147.

(iii) By deleting the figures and symbols "1s. 0d." from paragraph No. 3 of regulation No. 147, and by inserting in lieu thereof the figures and symbols "1s. 3d."

(iv) By deleting paragraphs Nos. 5 and No. 6 of regulation No. 147.

(v) By deleting the figure and symbol "5s." where appearing on the first line of paragraph No. 9 (a) of regulation No. 147, and by inserting in lieu thereof the figures and symbols "13s. 6d."

(vi) By deleting the figure and words "50 per cent." where appearing on the third line of paragraph No. 9 (a) of regulation No. 147, and by inserting in lieu thereof the figures and symbols "8s. 6d."

(vii) By deleting from paragraph No. 9 (a) of regulation No. 147 all words after the word "wharfage" appearing in line three.

(viii) By deleting paragraph No. 9 (b) of regulation No. 147.

(ix) By deleting the figures and symbols "1s. 0d." where appearing in the second line of paragraph No. 11 of regulation No. 147, and by inserting in lieu thereof the figures and symbols "1s. 8d."

(x) By substituting for paragraph No. 12 of regulation No. 147 the following:—

12. "Products of the soil of the State" means such goods as the Commissioners from time to time declare to be products of the soil of the State, such as grain, flour, agricultural, horticultural and farm produce, and coal (the product of the State).

- (xi) By deleting paragraph No. 15 of regulation No. 147.  
 (xii) By deleting paragraph No. 18 of regulation No. 147.  
 (16) By deleting regulation No. 148, and by inserting in lieu thereof the following:—

No. 148.

INWARD CARGO.

The rates of Wharfage and Handling Charges on Inward Cargo shall be as under:—

Description of Goods.	Wharfage.	Handling Charges.	
		Delivered over wharves, Trust receiving and delivering.	Discharged direct from ships' slings into Railway wagons or other vehicles for consignment off the wharves.
	£ s. d.	£ s. d.	£ s. d.
All goods for which other specific rates are not provided—per ton	13 6	1 0 0	6 0
Bronze Coin (in boxes), Bullion Specie or Bank Notes—per box or bar	4 0	1 0	1 0
Chaff (in bags), Oats, Hay and Straw (in bales not compressed)—per ton	13 6	1 9 0	10 8
Coal (loose)—			
(a) If landed by tubs or baskets—per ton	10 0	—	3 8
(b) If landed by grabs—per ton	10 0	—	1 8
Coal landed for bunkering purposes—per ton	—	—	—
Handling Charges as for Coal (loose)	1 3	—	—
Coke (in bags)—per ton	4 6	1 9 0	10 8
Coke (loose)—			
(a) If landed by tubs or baskets—per ton	4 6	—	6 8
(b) If landed by grabs—per ton	4 6	—	3 8
Cycles, not including motor cycles (uncased and set up on own wheels and capable of being run on same)	each	each	per ton
Empty Returns—per ton	4 0	2 0	6 0
Empty Returns (not knocked down or nested)—per ton	5 0	1 0 0	6 0
Explosives—Minimum wharfage charge 8s. 6d. Consignee must find labour for handling—per ton	8 6	—	—
Fresh Fish—per ton	4 6	1 0 0	6 0
Furniture, second-hand (in transport boxes)—per ton	5 0	1 0 0	6 0
Hides—			
(a) Buffalo, loose, dry—each	3	1 0	8
(b) Other, loose, dry—each	2	6	4
(c) Other, loose, wet—each	2	9	6
(d) In bags, bundles or bales—per ton	13 6	1 0 0	6 0
Iron and Steel—			
(a) Angles, flats, rounds, etc., in pieces not exceeding 1 cwt.—per ton	13 6	1 4 0	10 8
(b) In bundles or pieces exceeding 1 cwt.—per ton	13 6	1 0 0	6 0
Livestock—			
Horses, cattle and other large stock—each	6 3	—	—
Calves, Foals and Dogs (not caged or crated)—each	5 0	—	—
Pigs, Sheep and Goats (not caged or crated)—each	5	—	—
Material (in crude form for the manufacture of artificial manure and acids such as Rock Phosphate, Phosphatic Guano, Sulphur and Sulphur Bearing Ores, etc.)—			
(a) In bulk cargoes and landed loose—			
(i) If landed by tubs or baskets—per ton	2 9	—	3 8
(ii) If landed by grab or skip—per ton	2 9	—	1 8
(b) In bags or mats—per ton	2 9	17 0	5 8
Minerals, metallic and earthy, and metallurgical products mined in the State—per ton	4 6	1 0 0	6 0
Motor Cars, Utilities, Trailers and Caravans for conveyance of passengers and/or personal effects only, used and uncased, and on own wheels—each	1 0 0	14 0	per ton 6 0
Motor Cars, Motor Vehicles, Vehicles, Agricultural, Horticultural and Industrial Machinery (uncased and set up on own wheels and capable of being run or towed on same)—per ton	1 0 0	—	6 0
Weighing up to 1 ton gross	—	each 15 0	—
Exceeding 1 ton and not exceeding 3 tons gross	—	1 5 0	—
Exceeding 3 tons and not exceeding 5 tons gross	—	1 16 0	—
Exceeding 5 tons gross	—	2 10 0	—



Description of Goods.	Wharfage.	Handling Charges.	
		Delivered over wharves, Trust receiving and delivering.	Discharged direct from ships' slings into Railway wagons or other vehicles for consignment off the wharves.
	£ s. d.	£ s. d.	£ s. d.
Motor Chassis, uncased and on own wheels—per ton	1 0 0	As for vehicles	6 0
Motor Vehicle Parts, including chassis unmounted, bodies, etc., representing complete units, landed for assembly locally, but excluding spare parts for replacement, and tyres, tubes, etc.—per ton	11 6	1 0 0	6 0
Oils and Inflammable Liquids (fuel, lighting or lubricating)—			
(a) Other than as bunker supplies for vessels of war and either pumped ashore in bulk or transferred direct from a tanker to a commercial vessel by means of wharf pipe lines—per ton	13 6	—	—
(b) In containers—per ton	13 6	1 0 0	6 0
Pipes—4in. in diameter or less, not cased, crated or in bundles—per ton	13 6	1 4 0	10 8
Skins—per single undumped bale or per two bundles	per ton 13 6	each 2 4	each 1 4
Timber—per ton	5 0	2 0 0	11 6
Timber, when landed in mark order and when unit size of pieces or bundles is in excess of 2 cubic feet—per ton	5 0	1 0 0	6 0
Wool per single bale or per two pockets, bundles or bags	2 9	2 4	1 4
Minimum charges—per consignment	1 6	1 0	1 0

(17) By deleting regulation No. 149 and by inserting in lieu thereof the following:—

No. 149.

OUTWARD CARGO.

The Rates of Wharfage and Handling Charges on Outward Cargo shall be as under, provided that—

- (a) goods manufactured within the State when delivered for shipment ex factory or ex wholesale store or ex retail store and being unused, as distinct from second hand; and products of the soil of the State (except those which the Commissioners may by notice exclude from the application of this proviso) shall be free of wharfage on shipment to any port, if such goods or products are declared, in such manner as the Commissioners may from time to time require, to be goods or products of the kind mentioned in these provisos, and are so declared at the time of delivery for shipment;
- (b) the wharfage rate on cargo shipped to ports within the State shall unless otherwise stipulated, be 2s. per ton.

Description of Goods.	Wharfage.	Handling Charges.	
		Shipped over wharves, Trust receiving and delivering.	Shipped direct ex Railway wagons or other vehicles to ships' slings.
	£ s. d.	£ s. d.	£ s. d.
All other goods for which specific rates are not provided—per ton	10 0	14 0	6 0
Bronze Coin (in boxes), Bullion Specie and Bank Notes—per box or bar	4 0	1 0	1 0
Chaff (in bags), Hay and Straw (in bales not compressed)—per ton	10 0	1 0 0	10 8
Cycles, not including motor cycles (uncased and set up on own wheels and capable of being run on same)—each	4 0	2 0	per ton 6 0
Empty Returns—per ton	5 0	14 0	6 0
Empty Returns (not knocked down or nested)—per ton	5 0	10 6	6 0
Explosives—Minimum wharfage charge, 6s. 8d. Consignee must find labour for handling—per ton	6 8	—	—
Flour, Bran and Pollard—per ton of 2,000 lb.	10 0	14 0	6 0

Description of Goods.	Wharfage.	Handling Charges.	
		Shipped over wharves, Trust receiving and delivering.	Shipped direct ex Railway wagons or other vehicles to ships' slings.
	£ s. d.	£ s. d.	£ s. d.
Flour, Bran and Pollard (in consignments of 50 tons or more)—per ton of 2,000 lb. ....	10 0	10 8	4 6
Fruit, fresh—per ton ....	10 0	14 0	9 0
Furniture, second-hand (in transport boxes)—per ton ....	5 0	14 0	6 0
Hides—			
(a) Buffalo, loose, dry—each ....	3	9	6
(b) Other, loose, dry—each ....	2	6	4
(c) Other, loose, wet—each ....	2	9	6
(d) In bags, bundles or bales (including hide pieces)—per ton ....	10 0	14 0	6 0
Livestock—			
Horses, Cattle and other Large Stock—each ....	5 0	—	—
Calves, Foals and Dogs (not caged or crated)—each ....	4 0	—	—
Pigs, Sheep and Goats (not caged or crated)—each ....	4	—	—
Meat, frozen or chilled (in carcase form)—per ton	10 0	1 0 6	14 0
Metal Scrap—			
(a) Loose in pieces of 1 cwt. or more—per ton	3 6	—	9 0
(b) Loose, small—per ton ....	3 6	—	14 0
(c) In containers—per ton ....	3 6	14 0	6 0
Minerals, Metallic and Earthy, and Metallurgical Products, mined in the State—			
(a) Of gross value under £10 per ton—			
(i) In containers—per ton ....	Nil	14 0	6 0
(ii) Loose—per ton ....	Nil	—	9 0
(b) Other—			
(i) In containers—per ton ....	3 6	14 0	6 0
(ii) Loose—per ton ....	3 6	—	9 0
Motor Cars, Utilities, Trailers or Caravans for conveyance of passengers and/or personal effects only, used and uncased, and on own wheels—each ....	1 0 0	14 0	per ton 6 0
Motor Cars, Motor Vehicles, Vehicles, Agricultural, Horticultural and Industrial Machinery (uncased and set up on own wheels and capable of being run or towed on same)—per ton ....	1 0 0	—	6 0
Weighing up to 1 ton gross ....	—	each 10 0	—
Exceeding 1 ton and not exceeding 3 tons gross	—	17 0	—
Exceeding 3 tons and not exceeding 5 tons gross	—	1 5 0	—
Exceeding 5 tons gross ....	—	1 15 0	—
Oats—per ton	10 0	16 0	7 6
Petrol, Kerosene, Fuel Oil and other Petroleum Products and By-products refined or manufactured locally from crude oil (notwithstanding proviso (a) of this regulation)			
(a) To ports within the State—			
In bulk ....	Nil	—	—
In containers ....	Nil	14 0	6 0
(b) To other ports—			
In bulk ....	5 0	—	—
In containers ....	5 0	14 0	6 0
(c) As bunkers (see regulation No. 160) ....	5 0	—	—
Sandalwood—			
(a) Loose—per ton (weight) ....	5 0	—	14 0
(b) Crated, cased, bagged or bundled—per ton (weight) ....	5 0	14 0	6 0
Skins (in bales or bundles)—per ton ....	10 0	14 0	6 0
Timber—			
(a) Railway sleepers—per ton ....	2 0	—	7 0
(b) Other—per ton ....	2 0	1 8 0	14 0
Wheat—per ton ....	10 0	14 0	6 0
Wheat (in consignments of 50 tons or more)—per ton ....	10 0	12 6	5 4
Wool—per single bale, or per two pockets, bundles or bags—each ....	1 6	2 4	1 4
Minimum charges—per consignment ....	1 6	1 0	1 0

(18) By deleting the figures and symbols "10d."—"1s. 6d."—"1s." where appearing in paragraph (b) of regulation No. 150, and by inserting in lieu thereof the figures and symbols "1s."—"1s. 9d."—"1s. 3d." respectively.

(19) By inserting the following regulation:—

No. 150A.

*Rebates of Wharfage Charges.*—The Commissioners may, in their discretion, and according to the circumstances of each case, allow such rebates as they consider reasonable on the wharfage charges prescribed

by these regulations in respect of goods imported into this State for manufacturing, industrial or similar purposes, or in the case of exports where goods are wholly or partially manufactured or produced within the State, or in respect of other goods where, in their opinion, a rebate is justified.

(20) By revoking regulation No. 151.

(21) By revoking regulation No. 153.

(22) (i) By deleting the figures and symbols "3s. 0d." from line three of paragraph (b) of regulation No. 160, and by inserting in lieu thereof the figures and symbols "5s. 0d."

(ii) By deleting from paragraph (b) of regulation No. 160 the words "plus the Special War Surtax of 20 per cent. as imposed by regulation No. 50 of these regulations."

(23) By deleting paragraph (c) of regulation No. 201.

---

The foregoing amendments shall have force and effect as from the 1st day of July, 1956.

Passed by a resolution of the Fremantle Harbour Trust Commissioners at a meeting of the said Commissioners held on the 1st day of June, 1956.

The Common Seal of the Fremantle Harbour Trust Commissioners was duly affixed and impressed hereto by order and in the presence of—

(Sgd.) L. L. BATEMAN,  
Chairman.

(Sgd.) FREDK. MANN,  
Commissioner.

(Sgd.) H. ACTON,  
Secretary.

[L.S.]

---

Approved by His Excellency the Governor in Executive Council, this 6th day of June, 1956.

R. H. DOIG,  
Clerk of the Council.