



WESTERN  
AUSTRALIAN  
GOVERNMENT  
**Gazette**

ISSN 1448-949X

PRINT POST APPROVED PP665002/00041



**PERTH, TUESDAY, 23 SEPTEMBER 2008 No. 162 SPECIAL**

PUBLISHED BY AUTHORITY JOHN A. STRIJK, GOVERNMENT PRINTER AT 3.45 PM

© STATE OF WESTERN AUSTRALIA

**OCCUPATIONAL SAFETY AND HEALTH ACT 1984**

**INSTRUMENT OF DECLARATION NO. 6 OF 2008**

Made under Section 4(3).

The Minister for Employment Protection administering both the Occupational Safety and Health Act 1984 and the Mines Safety and Inspection Act 1994 and the Minister for Resources administering the Mining Act 1978 declare that from 6 August 2008 until the cancellation of this Instrument—

1. all of the provisions of the Occupational Safety and Health Act 1984 as it may be amended from time to time; and
2. all of the regulations made, or to be made, under the Occupational Safety and Health Act 1984,

apply to and in relation to the workplaces or parts of workplaces that, from time to time, are on or inside the area bounded by a dark blue line with reference point numbers 1-32 on the 1 page map which is the Schedule to this Instrument of Declaration.

Dated the 6th day of August 2008.

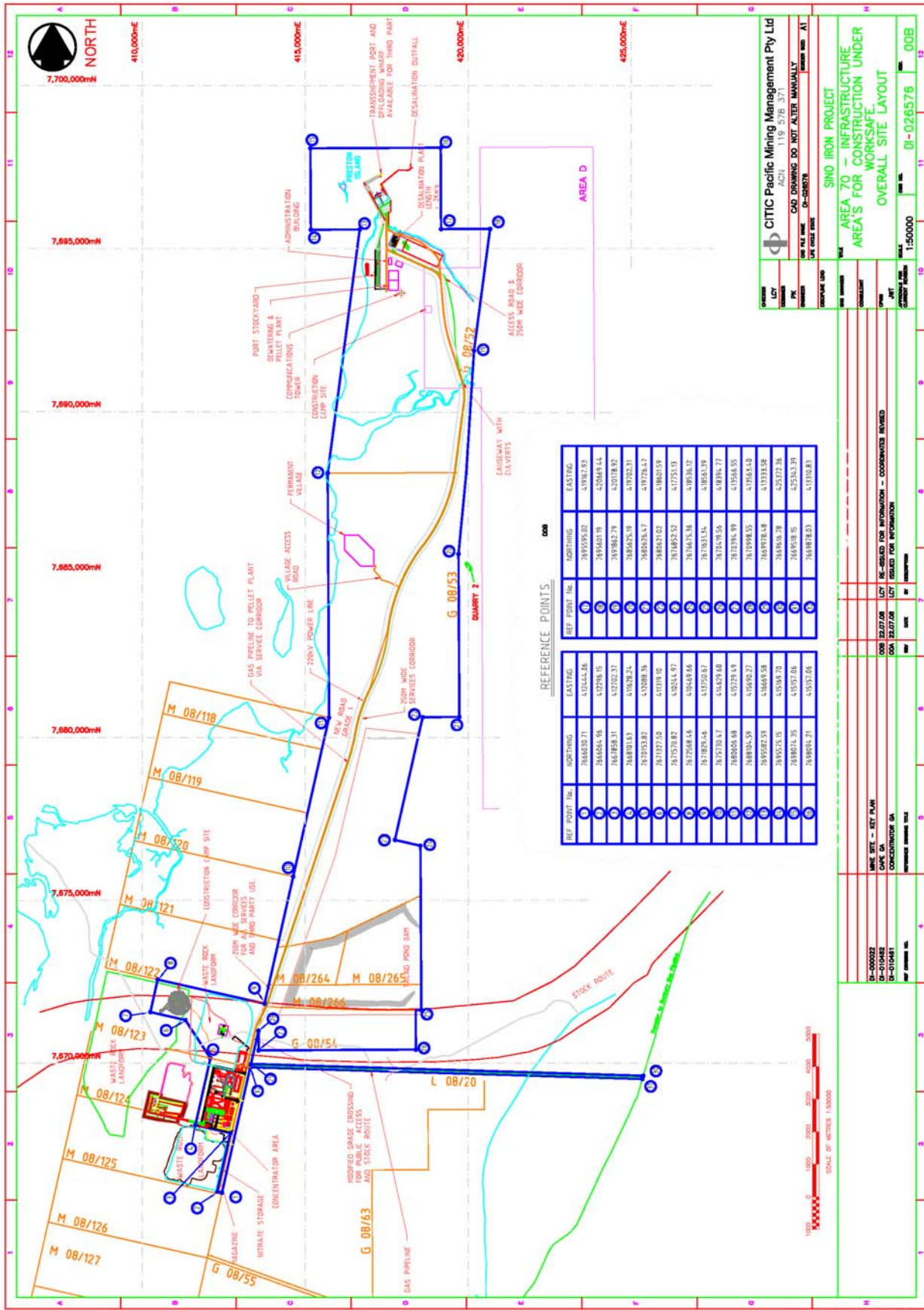
JONATHON (JON) ROBERT FORD,  
Minister for Employment Protection.

Date of signing: 25 August 2008.

FRANCIS (FRAN) MICHAEL LOGAN,  
Minister for Resources.

Date of signing: 27 August 2008.

\_\_\_\_\_



REFERENCE POINTS

REF. POINT No.	NORTHING	EASTING
01	7666207.71	412444.86
02	7666207.71	419672.83
03	7666466.96	420449.44
04	7666466.96	420449.44
05	7666466.96	420449.44
06	7666466.96	420449.44
07	7666466.96	420449.44
08	7666466.96	420449.44
09	7666466.96	420449.44
10	7666466.96	420449.44
11	7666466.96	420449.44
12	7666466.96	420449.44
13	7666466.96	420449.44
14	7666466.96	420449.44
15	7666466.96	420449.44
16	7666466.96	420449.44
17	7666466.96	420449.44
18	7666466.96	420449.44
19	7666466.96	420449.44
20	7666466.96	420449.44
21	7666466.96	420449.44
22	7666466.96	420449.44
23	7666466.96	420449.44
24	7666466.96	420449.44
25	7666466.96	420449.44
26	7666466.96	420449.44
27	7666466.96	420449.44
28	7666466.96	420449.44
29	7666466.96	420449.44
30	7666466.96	420449.44

**CITIC Pacific Mining Management Pty Ltd**  
 ACN: 119 576 337  
 CAD DRAWING DO NOT ALTER MANUALLY  
 DATE: 01-09-2008  
 DRAWN: [Name]  
 CHECKED: [Name]  
 SCALE: 1:50000  
 SHEET NO: 01-026576  
 OF: 008

**SINO IRON PROJECT**  
**AREA 70 - INFRASTRUCTURE**  
**AREA'S FOR CONSTRUCTION UNDER**  
**WORKSAFE.**  
**OVERALL SITE LAYOUT**

DATE: 01-09-2008  
 TIME: 11:00 AM  
 PROJECT: SINO IRON PROJECT  
 SHEET: 01-026576  
 OF: 008

SCALE: 1:50000  
 SCALE OF METERS: 1:50000

DATE: 01-09-2008  
 TIME: 11:00 AM  
 PROJECT: SINO IRON PROJECT  
 SHEET: 01-026576  
 OF: 008