



**WESTERN
AUSTRALIAN
GOVERNMENT
Gazette**



ISSN 1448-949X PRINT POST APPROVED PP665002/00041

PERTH, WEDNESDAY, 8 OCTOBER 2008 No. 174 SPECIAL

PUBLISHED BY AUTHORITY JOHN A. STRIJK, GOVERNMENT PRINTER AT 3.45 PM

© STATE OF WESTERN AUSTRALIA

Reprint of instrument of declaration No. 4 of 2008 originally published in *Government Gazette* No. 161 on page 4369 dated 23 September 2008 and reprinted here in a larger size for clarity.

OCCUPATIONAL SAFETY AND HEALTH ACT 1984

INSTRUMENT OF DECLARATION NO. 4 OF 2008 MADE UNDER SECTION 4(3).

The Minister for Employment Protection administering both the Occupational Safety and Health Act 1984 and the Mines Safety and Inspection Act 1994 and the Minister for Resources administering the Mining Act 1978 declare that from 15 August 2008 until the cancellation of this Instrument—

1. all of the provisions of the Occupational Safety and Health Act 1984 as it may be amended from time to time; and
2. all of the regulations made, or to be made, under the Occupational Safety and Health Act 1984,

apply to and in relation to the workplaces or parts of workplaces that, from time to time, are on or inside the area bounded by the broken line punctuated with dots with coordinates and shaded with a hatched broken line punctuated with dots on the 1 page map which is the Schedule to this Instrument of Declaration.

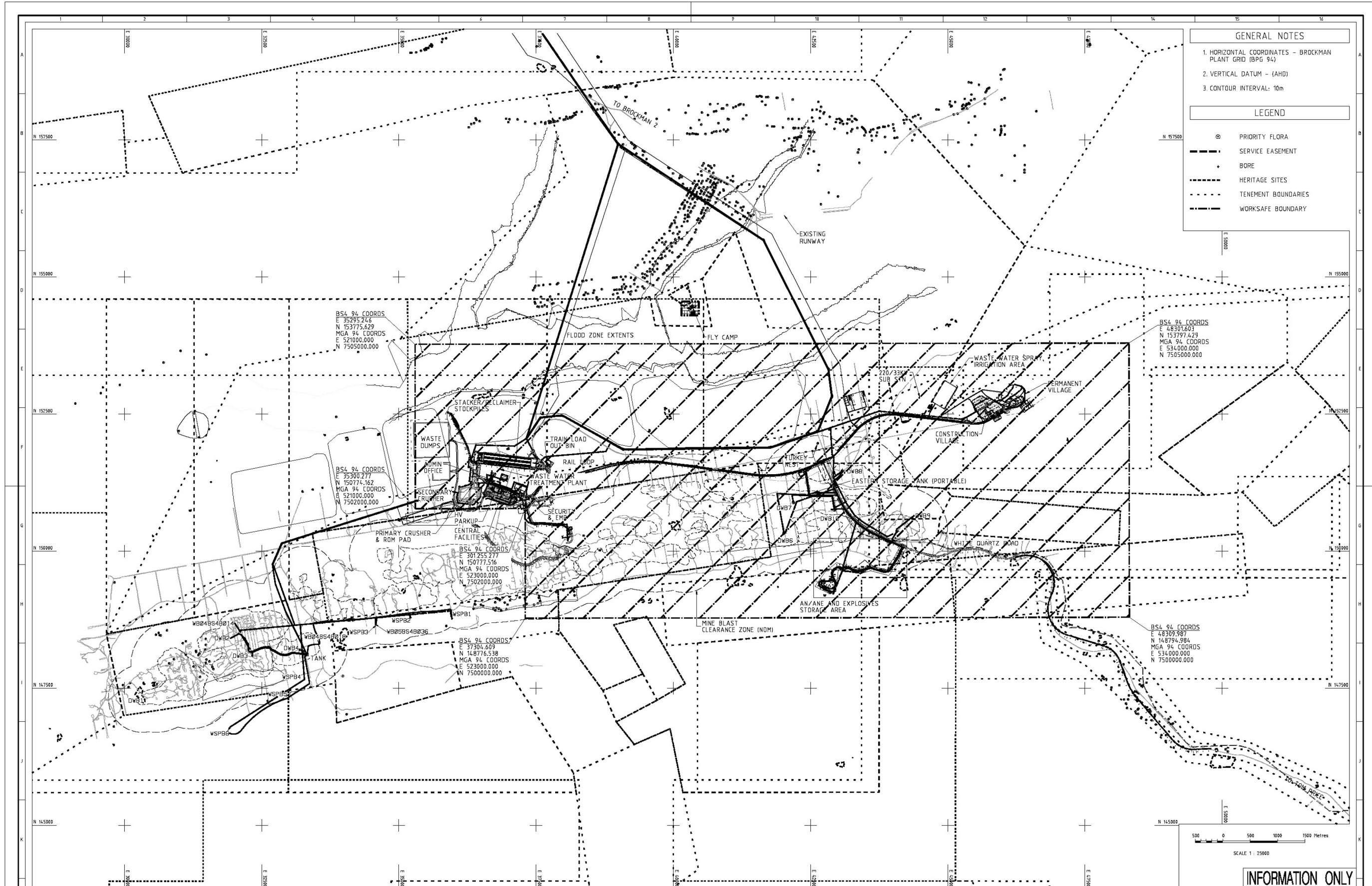
Dated the 15th day of August 2008.

JONATHON (JON) ROBERT FORD, Minister for Employment Protection.

Date of signing: 25 August 2008.

FRANCIS (FRAN) MICHAEL LOGAN, Minister for Resources.

Date of signing: 27 August 2008.



GENERAL NOTES

1. HORIZONTAL COORDINATES - BROCKMAN PLANT GRID (BPG 94)
2. VERTICAL DATUM - (AHD)
3. CONTOUR INTERVAL: 10m

LEGEND

- ⊙ PRIORITY FLORA
- SERVICE EASEMENT
- BORE
- HERITAGE SITES
- TENEMENT BOUNDARIES
- WORKSAFE BOUNDARY

INFORMATION ONLY
NOT FOR CONSTRUCTION

DRAWN: [Name]		DISCIPLINE: ENG.		APP: [Name]		DATE: 14.07.07	
CHECKED: [Name]		DISCIPLINE: ENG.		APP: [Name]		DATE: 14.07.07	
SURT DRAFT: [Name]		DISCIPLINE: ENG.		APP: [Name]		DATE: 14.07.07	
APPROVED: [Name]		DISCIPLINE: ENG.		APP: [Name]		DATE: 14.07.07	
APP. FOR CONST.:		DISCIPLINE: ENG.		APP: [Name]		DATE: 14.07.07	

REV	BY	DATE	DESCRIPTION	CKD	APP
1	AL	08			
2	BP	21.01.08	INTERNAL REVIEW COMMENTS INCORPORATED		

DRAWING NUMBER: BSA-0100-G-001		SCALE: 1:25000	
PROJECT NUMBER:		SCALE: 1:25000	