



WESTERN
AUSTRALIAN
GOVERNMENT
Gazette

ISSN 1448-949X

PRINT POST APPROVED PP665002/00041

3389



PERTH, TUESDAY, 1 SEPTEMBER 2009 No. 156 SPECIAL

PUBLISHED BY AUTHORITY JOHN A. STRIJK, GOVERNMENT PRINTER AT 3.00 PM

© STATE OF WESTERN AUSTRALIA

OCCUPATIONAL SAFETY AND HEALTH ACT 1984

INSTRUMENT OF DECLARATION NO. 3 OF 2009 MADE UNDER SECTION 4(3).

The Minister for Commerce, being the Minister administering the *Occupational Safety and Health Act 1984*, and the Minister for Mines and Petroleum, being the Minister administering the *Mining Act 1978* and the *Mines Safety and Inspection Act 1994* declare that—

1. from 6 July 2009 until the cancellation of this instrument—
 - (a) all of the provisions of the *Occupational Safety and Health Act 1984* as it may be amended from time to time; and
 - (b) all of the regulations made, or to be made, under the *Occupational Safety and Health Act 1984*,

apply to and in relation to the workplaces or parts of workplaces that, including the Electrical Switchyard and the Gas Turbine, from time to time are on or inside the area marked by a red line labelled: 257.1, 150, 121.5, 137.2, 62.6, 42.5, 380.7, 135.2, 37.5, 21.9, 91.3, 298.5, 38.8, 11.1, 81.3, 119.0, 60.1, 191.5, 695.8, and 813.4 on the Map in the Schedule to this Instrument of Declaration; and

2. the Instrument of Declaration No. 1 of 2007 which was published in the *Gazette* (No. 21) on 7 February 2007 at pages 389 and 390, is cancelled with effect from 6 July 2009.

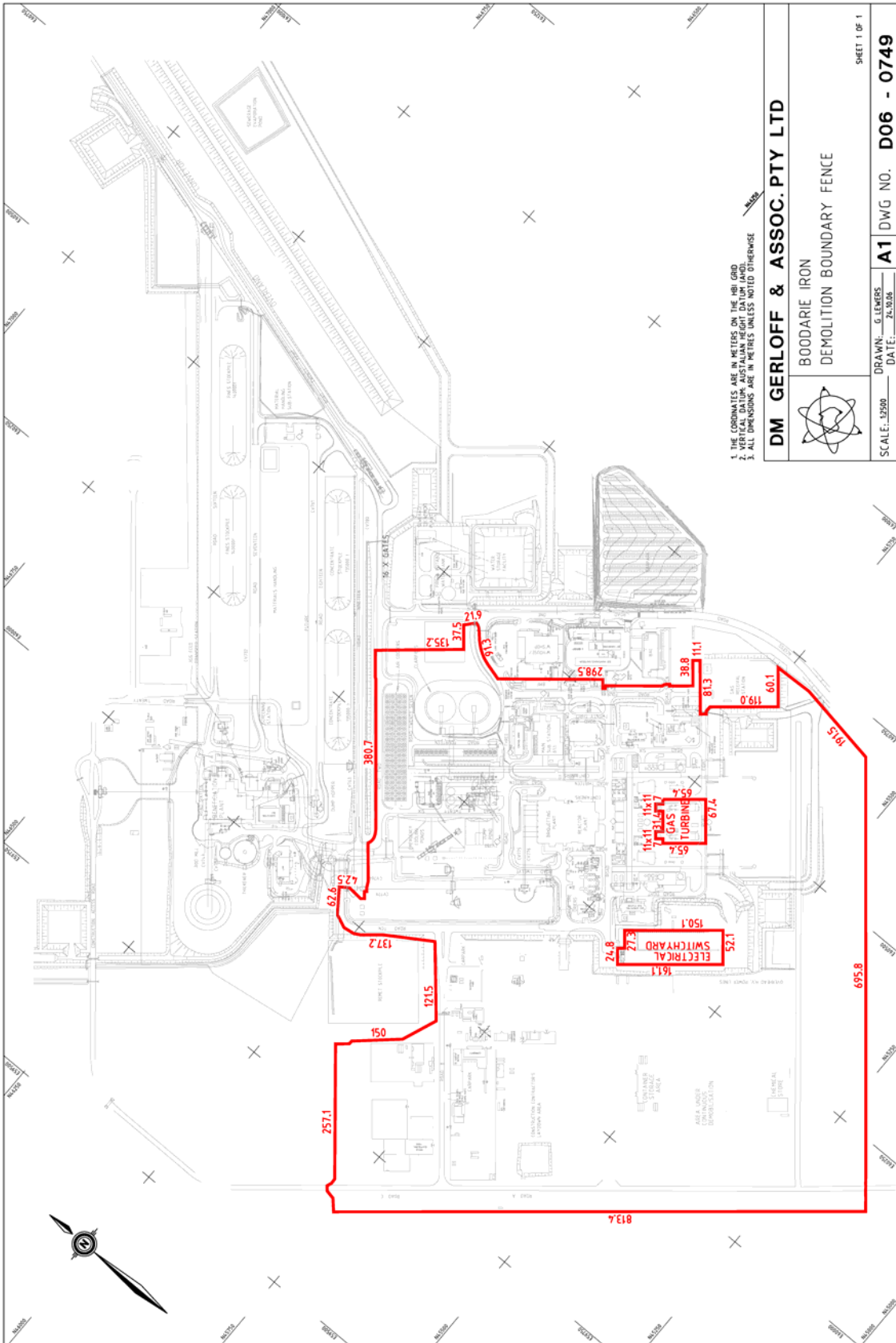
In this instrument—

1. “Electrical Switchyard” means the area on the Map identified by the words “Electrical Switchyard” and contained within the red lines labelled: 161.1, 24.8, 27.3, 150.1, and 52.1.
2. “Gas Turbine” means the area on the Map identified by the words “Gas Turbine” and contained within the red lines labelled: 65.4, 7, 11 x 11, 31.4, 11 x 11, 7, 65.4, and 67.4.

Dated the 6th day of July 2009.

TROY BUSWELL, Minister for Commerce.

NORMAN FREDERICK MOORE, Minister for Mines and Petroleum.



1. THE COORDINATES ARE IN METRES ON THE IBI GRID
 2. THE DIMENSIONS ARE IN METRES ON THE IBI GRID
 3. ALL DIMENSIONS ARE IN METRES UNLESS NOTED OTHERWISE

DM GERLOFF & ASSOC. PTY LTD	
BOODARIE IRON DEMOLITION BOUNDARY FENCE	
	
SCALE: 1:2500	DRAWN: G. LEMERS
DATE: 24.09.08	A1 DWG NO. D06 - 0749
SHEET 1 OF 1	