



WESTERN
AUSTRALIAN
GOVERNMENT
Gazette

ISSN 1448-949X

PRINT POST APPROVED PP665002/00041

1235



PERTH, WEDNESDAY, 6 APRIL 2011 No. 55 SPECIAL

PUBLISHED BY AUTHORITY JOHN A. STRIJK, GOVERNMENT PRINTER AT 3.00 PM

© STATE OF WESTERN AUSTRALIA

OCCUPATIONAL SAFETY AND HEALTH ACT 1984

INSTRUMENT OF DECLARATION NO. 1 OF 2011

Made under section 4(3).

The Minister for Commerce administering the *Occupational Safety and Health Act 1984* and the Minister for Mines and Petroleum administering the *Mining Act 1978* and the *Mines Safety and Inspection Act 1994* declare that from 1 February 2011 until the cancellation of this Instrument—

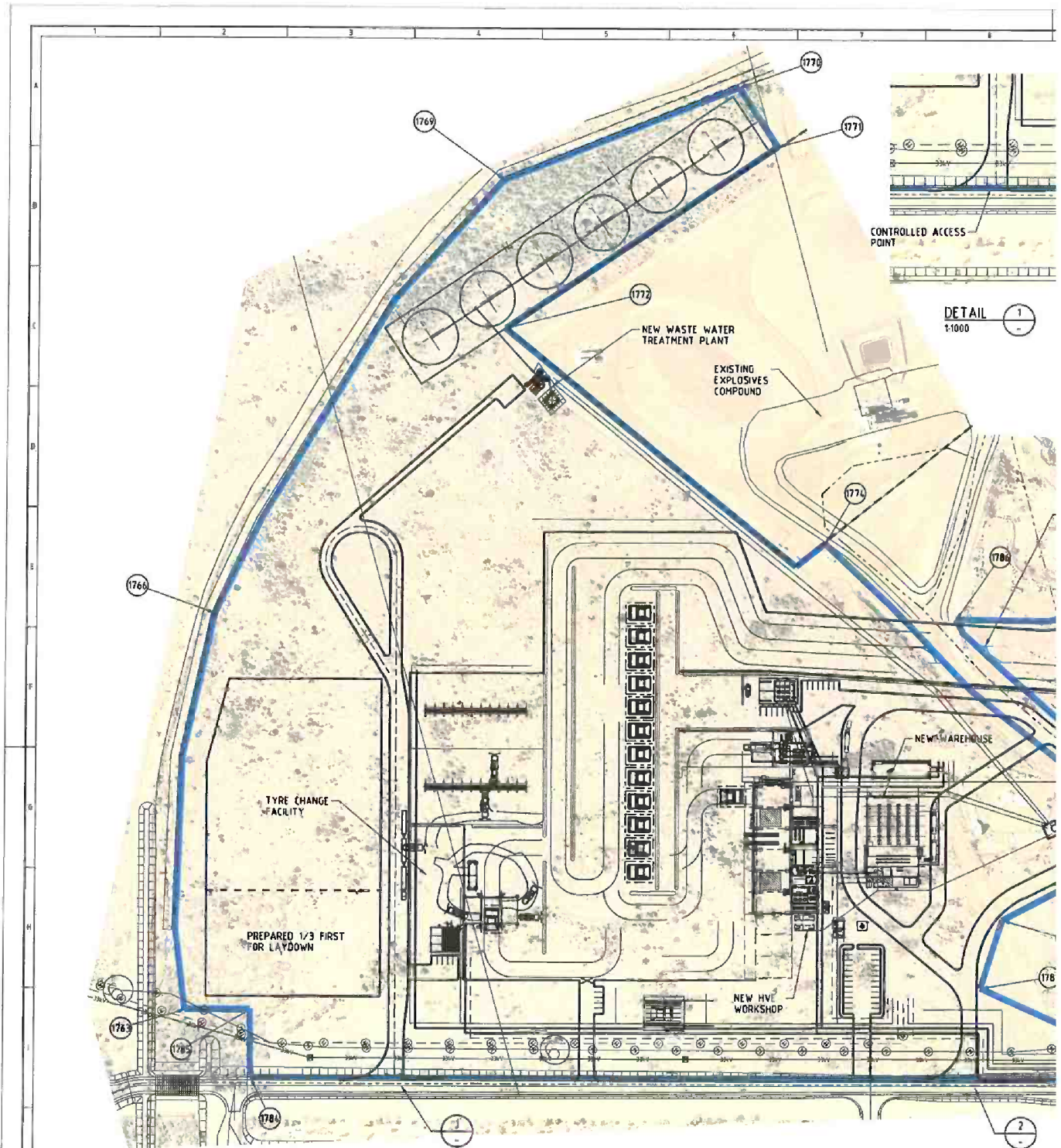
1. all of the provisions of the *Occupational Safety and Health Act 1984* as it may be amended from time to time; and
2. all of the regulations made, or to be made, under the *Occupational Safety and Health Act 1984*,

apply to and in relation to the workplaces or parts of workplaces that, from time to time, are on or inside the area bounded by the blue line with reference point numbers, as defined in the boundary setout tables, on the three maps which are the Schedule to this Instrument of Declaration.

Dated the 1st day of February 2011.

Hon. SIMON O'BRIEN, MLC, Minister for Commerce.

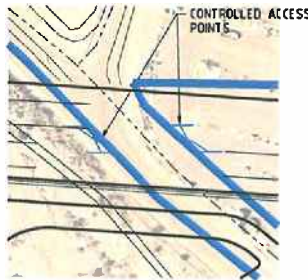
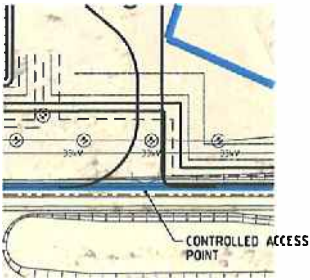
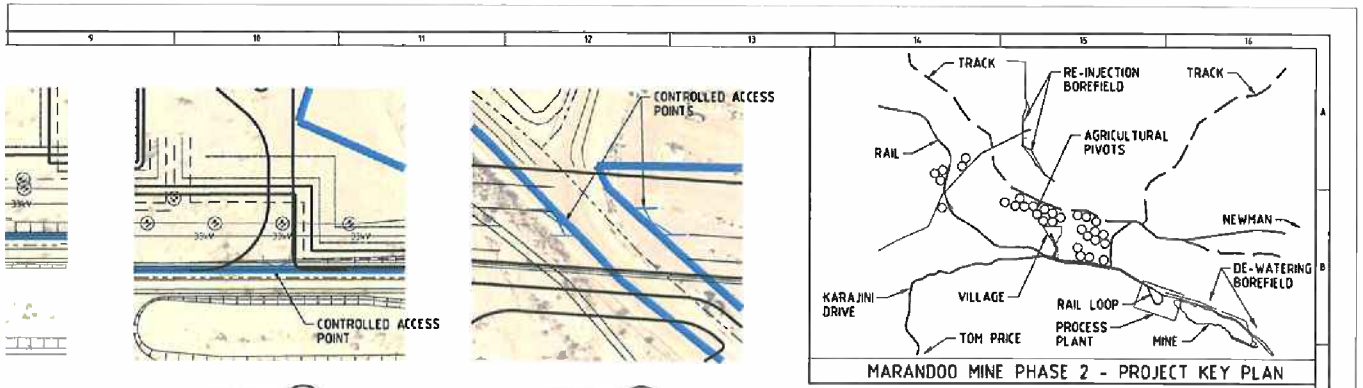
Hon. NORMAN MOORE, MLC, Minister for Mines and Petroleum.



BOUNDARY SETOUT TABLE

ID	EASTING	NORTHING	ID	EASTING	NORTHING	ID	EASTING	NORTHING
1763	614,758.009	7,496,616.068	1781	615,159.468	7,496,361.043	1794	615,616.530	7,496,205.539
1766	614,903.922	7,496,801.946	1782	615,191.766	7,496,309.389	1796	615,619.062	7,496,283.175
1769	615,191.245	7,496,919.422	1783	615,175.648	7,496,284.088	1800	615,538.758	7,496,330.631
1770	615,338.784	7,496,886.590	1784	614,768.390	7,496,560.401	1802	615,546.310	7,496,396.678
1771	615,338.288	7,496,844.319	1785	614,790.670	7,496,594.064	1803	615,475.183	7,496,418.679
1772	615,142.810	7,496,845.886	1786	615,269.757	7,496,551.442	1804	615,440.063	7,496,392.862
1774	615,230.242	7,496,632.637	1789	615,602.100	7,496,420.477	1805	615,366.884	7,496,416.412
1779	615,287.051	7,496,376.447	1791	615,676.115	7,496,291.591	1809	615,308.901	7,496,368.500
1780	615,193.184	7,496,387.049	1793	615,661.298	7,496,190.027			

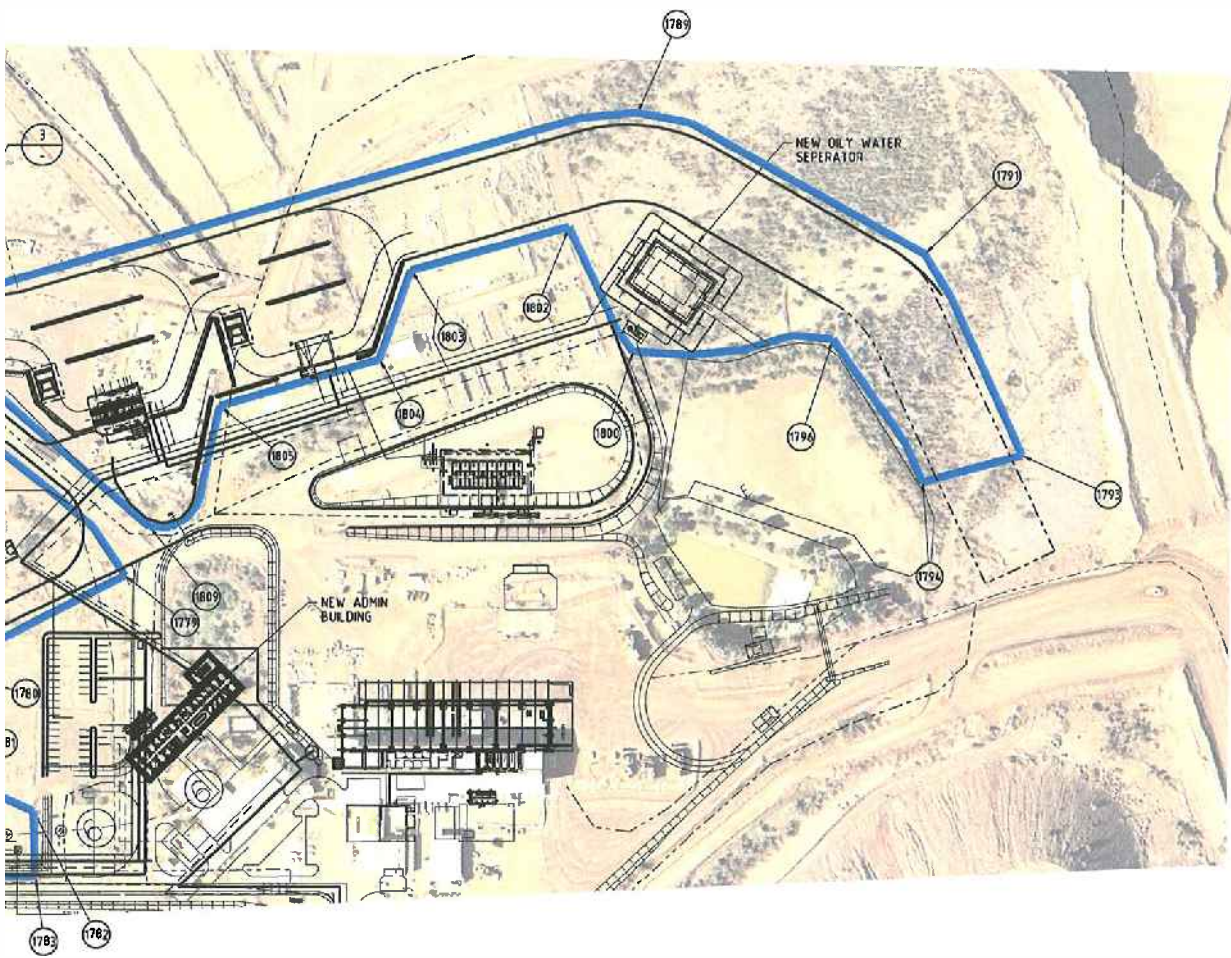
1	2	3	4	5	6	7	8
REV	BY	DATE	DESCRIPTION		CRD	APP	REV BY



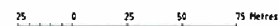
DETAIL 2 1:1000

DETAIL 3 1:1000

NOTES:
1. ALL DIMENSIONS ARE IN METERS.



SCALE 1:1000



SCALE 1:250

SIGNATURE	[Signature]	[Signature]	[Signature]	[Signature]	[Signature]
DATE	20/12/10	20/12/10	20/12/10	20/12/10	20/12/10
DESIGNED BY	LEAD ENGINEER	DESIGN APPROVED	PROJECT APPROVED	MD TRITO APPROVED	

DATE	DESCRIPTION	END	APP		



DRAWN	J. CROSS	23-10-10
TRACED		
CHECKED		
SUPT DRAFT		
PROJ. ENG.		
APPROVED		
APP. FOR CONST.		

RioTinto

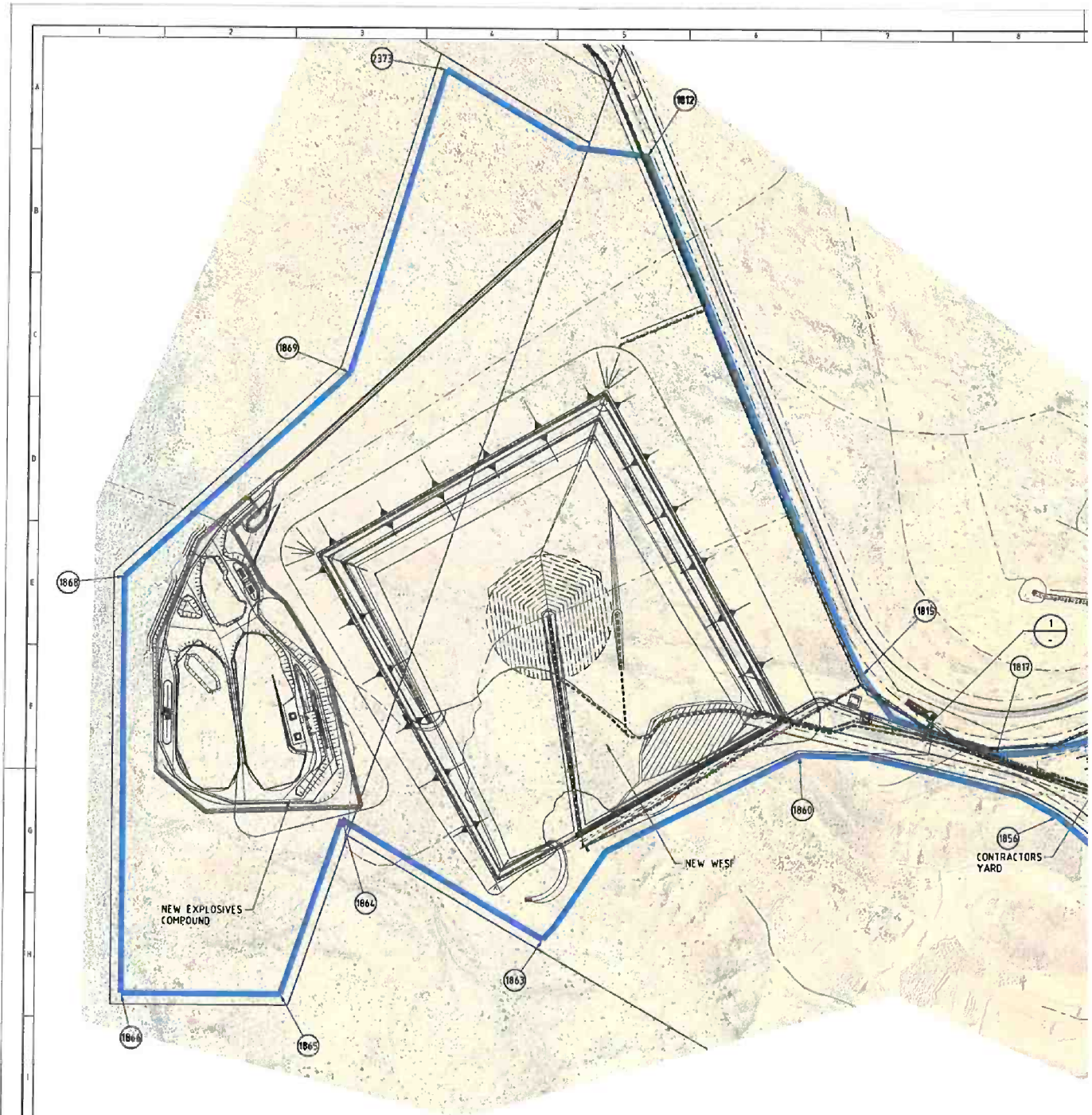
MARANDOO MINE PHASE 2
GENERAL SERVICES & SPARES
BLUE LINE DEMARCATION
SITE LAYOUT

SCALE 1:250
DRAWING NUMBER
MD-8000-G-00001
PROJECT NUMBER 9271

PILBARA IRON ASSET MANAGER FOR
HAMERSLEY IRON PTY LTD
HAMERSLEY IRON PTY LTD AND
ROBE RIVER MINING COMPANY PTY LTD



CAUTION

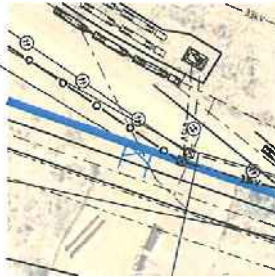


SETOUT BOUNDARY TABLE

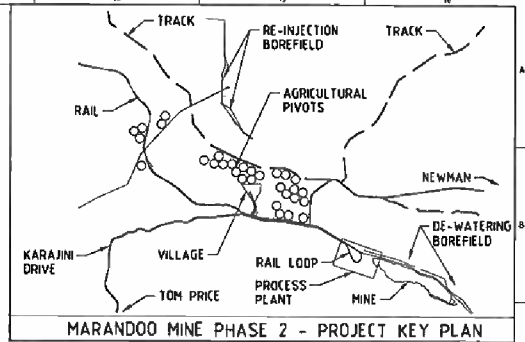
ID	EASTING	NORTHING	ID	EASTING	NORTHING
1812	613,369.436	7,497,620.345	1856	614,335.851	7,496,100.199
1815	613,877.804	7,496,423.481	1860	613,734.750	7,496,238.859
1817	614,190.063	7,496,241.737	1863	613,143.047	7,495,869.737
1823	614,614.740	7,496,452.390	1864	612,672.002	7,496,084.296
1831	615,307.779	7,495,972.943	1865	612,532.813	7,495,679.260
1833	615,428.663	7,495,841.277	1866	612,162.324	7,495,679.206
1834	615,363.398	7,495,741.274	1868	612,162.150	7,496,843.228
1844	614,680.116	7,496,053.837	1869	612,662.722	7,497,116.301
1851	614,825.727	7,495,754.159	2373	612,903.498	7,497,818.656
1852	614,814.525	7,495,710.994			

SHEET SIZE BY REFERENCES	REFERENCES	REFERENCES	REV BY	DATE	DESCRIPTION	END APP	REV BY	ISSUED FOR USE

CONTROLLED ACCESS POINT



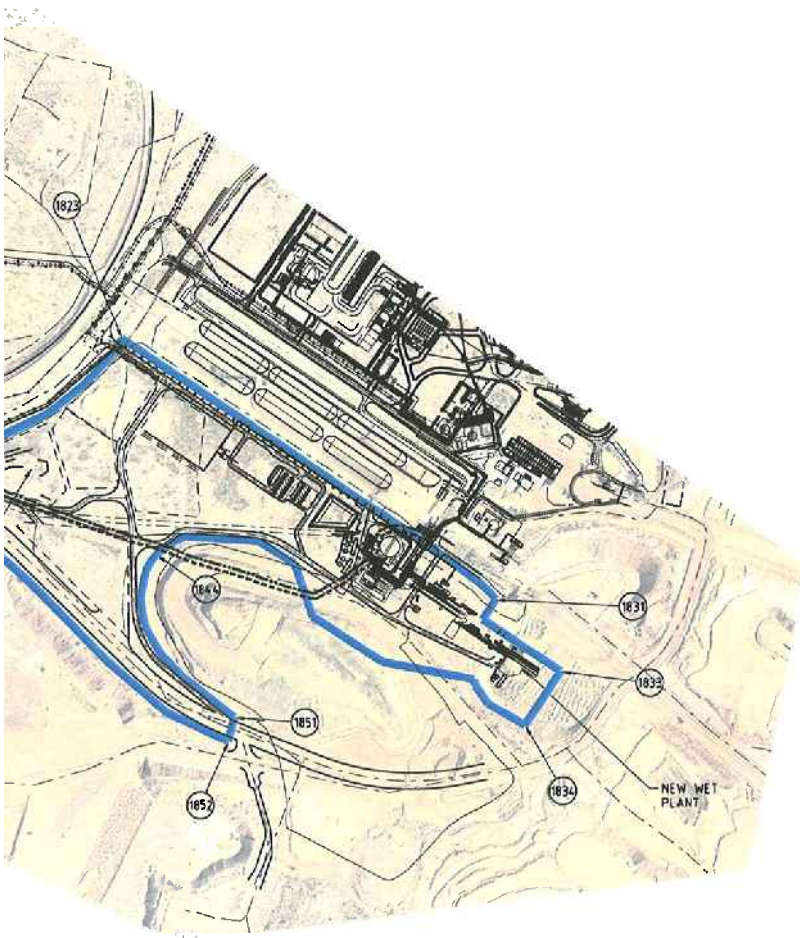
DETAIL 1
1:1000



MARANDOO MINE PHASE 2 - PROJECT KEY PLAN

NOTES:

- 1. CONFIRMATION REQUIRED DUE TO CLOSE PROXIMITY TO THE TENEMENT.
- 2. ALL DIMENSIONS ARE IN METERS.



SIGNATURE				
DATE	25/11/10	20.12.10	20.12.10	20.12.10
DESIGNED BY	LEAD ENGINEER	DESIGN APPROVED	PROJECT APPROVED	RIO TINTO APPROVED

DATE	DESCRIPTION	CND	APP	MGA-50 NORTH

RioTinto

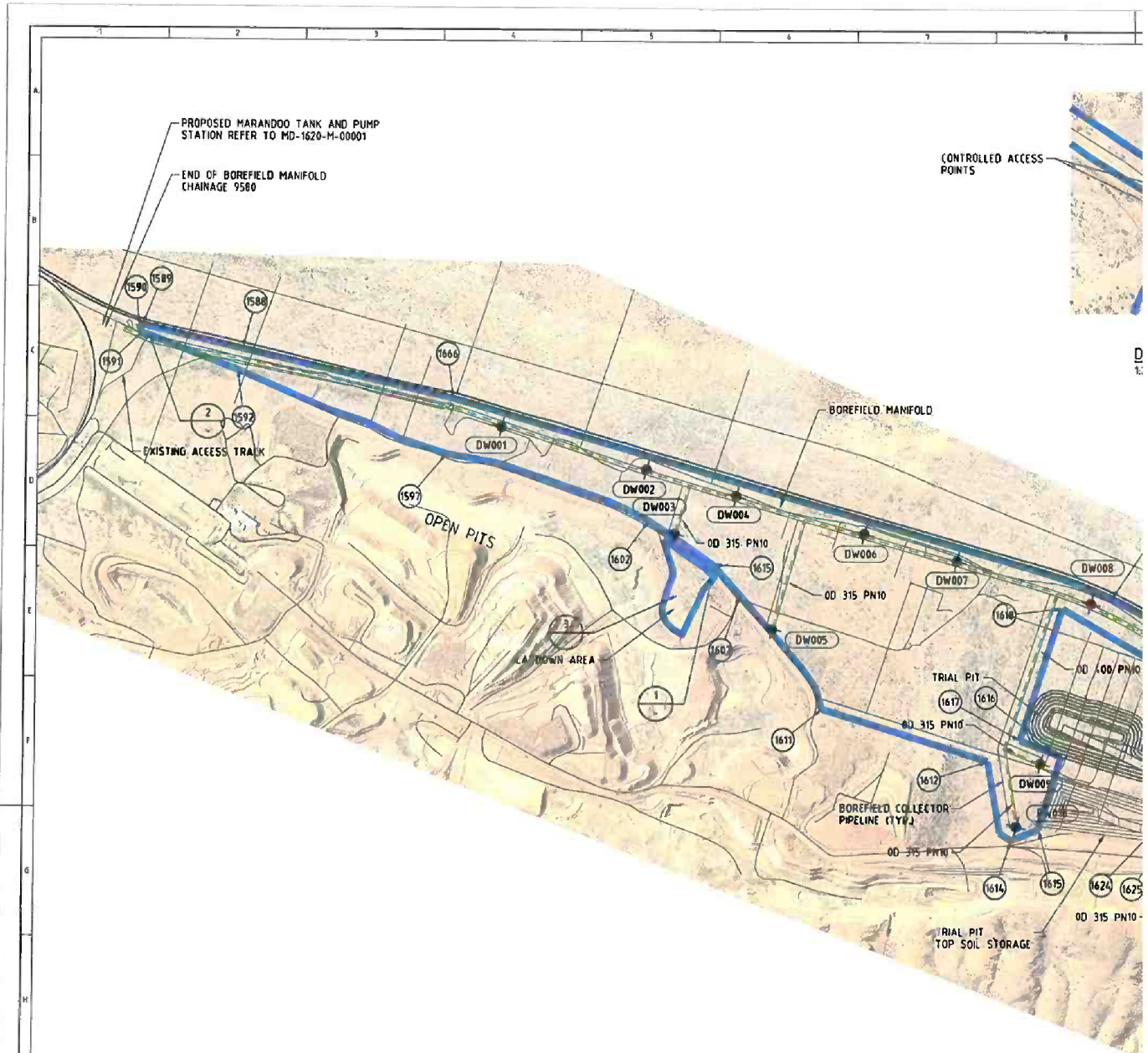
MARANDOO MINE PHASE 2
GENERAL SERVICES & SPARES
BLUE LINE DEMARCATION
SITE LAYOUT

PILBARA IRON: ABBEY MANAGER FOR
HAMMERLEY IRON PTY LTD
HAMMERLEY IRON PTY LTD AND
ROBE RIVER IRON COMPANY PTY LTD

THIRD ANGLE
PROJECTION

SCALE 1:5000
DRAWING NUMBER
MO-8000-G-00002
REV 0
PROJECT NUMBER 9311

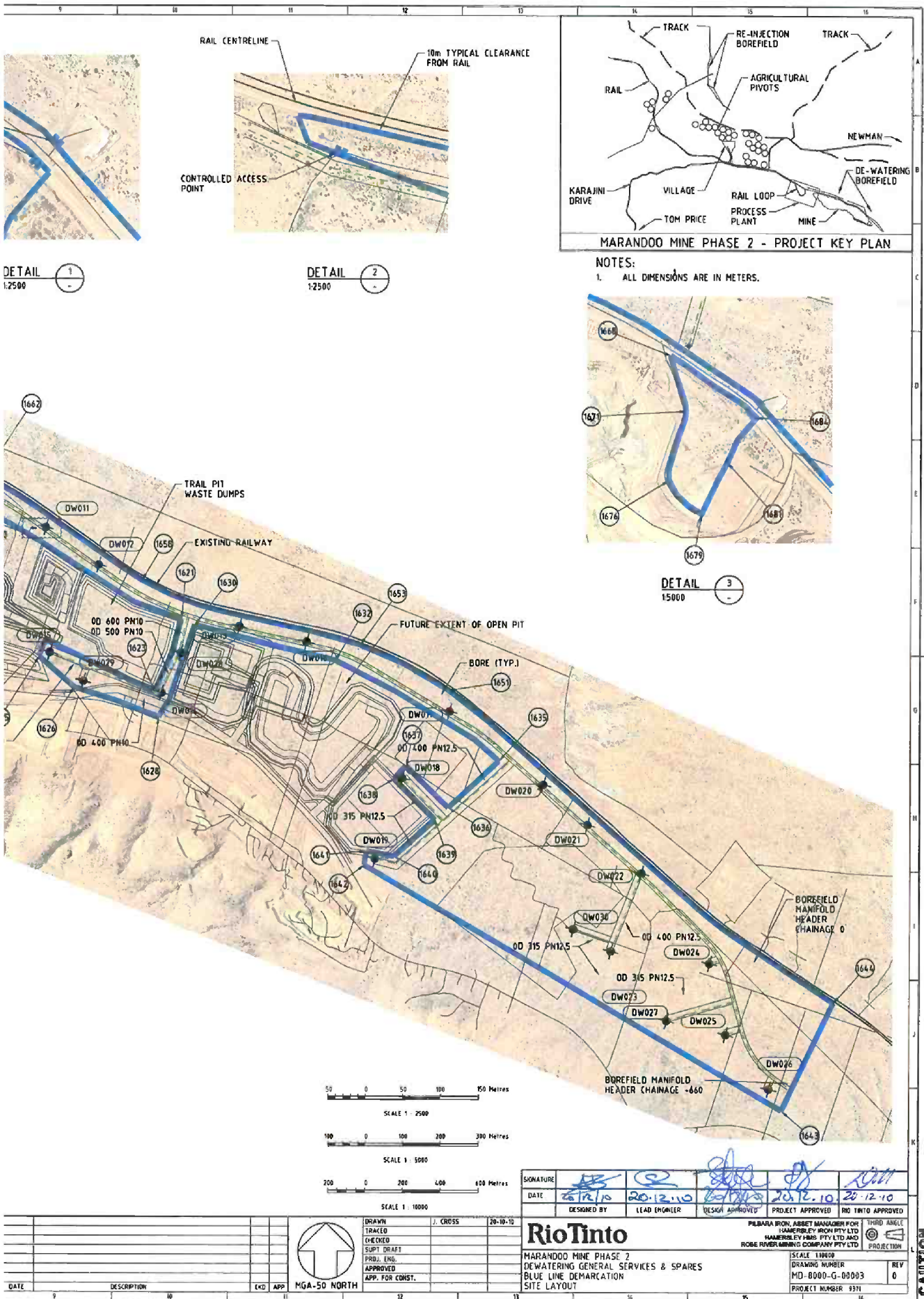
CAUTION



BOUNDARY SETOUT TABLE

ID	EASTING	NORTHING	ID	EASTING	NORTHING	ID	EASTING	NORTHING
1588	615,330.433	7,496,970.932	1618	618,966.465	7,495,845.469	1641	621,229.252	7,493,908.446
1589	614,801.746	7,497,072.892	1621	620,242.667	7,495,135.499	1642	621,217.521	7,493,833.441
1590	614,862.668	7,497,074.231	1623	620,099.727	7,494,751.314	1643	623,442.322	7,497,535.093
1591	614,878.728	7,497,038.800	1624	619,519.581	7,495,024.183	1644	623,712.928	7,493,107.903
1592	615,308.400	7,496,878.469	1625	619,483.566	7,494,937.061	1651	621,663.683	7,494,760.262
1597	616,236.095	7,496,515.065	1626	619,472.520	7,494,773.917	1653	621,191.736	7,494,999.748
1602	617,134.218	7,496,224.279	1628	620,122.557	7,494,616.339	1658	620,032.140	7,495,341.196
1607	617,542.307	7,495,899.489	1630	620,312.529	7,495,105.328	1662	619,184.878	7,495,889.745
1611	617,907.225	7,495,400.221	1632	621,060.182	7,494,917.991	1666	616,262.411	7,496,758.218
1612	618,640.710	7,495,171.373	1635	621,928.995	7,494,385.289	1668	622,840.626	7,496,534.174
1614	618,745.352	7,494,823.284	1636	621,662.752	7,494,137.838	1671	622,925.718	7,496,241.247
1615	617,422.473	7,496,032.730	1637	621,440.393	7,494,358.549	1676	622,634.081	7,495,874.018
1615	618,866.287	7,494,872.651	1638	621,374.117	7,494,291.574	1679	623,009.218	7,495,697.246
1616	618,964.566	7,495,194.680	1639	621,593.907	7,494,072.623	1681	623,144.742	7,495,967.966
1617	618,783.690	7,495,264.020	1640	621,378.263	7,493,878.540	1684	623,298.766	7,496,205.796

REFERENCES		REFERENCES		REVISED FOR USE		REVISED FOR USE	
REV	BY	DATE	DESCRIPTION	CHK	APP	REV	BY



DETAIL 1
1:2500

DETAIL 2
1:2500

MARANDOO MINE PHASE 2 - PROJECT KEY PLAN

NOTES:
1. ALL DIMENSIONS ARE IN METERS.

DETAIL 3
1:5000

SIGNATURE	<i>[Signature]</i>	<i>[Signature]</i>	<i>[Signature]</i>	<i>[Signature]</i>
DATE	20.12.10	20.12.10	20.12.10	20.12.10
DESIGNED BY	LEAD ENGINEER	DESIGN APPROVED	PROJECT APPROVED	RIO TINTO APPROVED

RioTinto

MARANDOO MINE PHASE 2
DEWATERING GENERAL SERVICES & SPARES
BLUE LINE DEMARCATION
SITE LAYOUT

PILBARA IRON: ABNEY MANAGER FOR HAMERSLEY IRON PTY LTD
HAMERSLEY IRON PTY LTD
ROBE RIVER MINING COMPANY PTY LTD

SCALE 1:10000
DRAWING NUMBER MD-8000-G-00003
REV 0
PROJECT NUMBER 9371

THIRD ANGLE PROJECTION



DATE	DESCRIPTION	CHKD	APP

CAUTION