

WESTERN
AUSTRALIAN
GOVERNMENT
Gazette
ISSN 1448-949X PRINT POST APPROVED PP665002/00041



PERTH, FRIDAY, 28 NOVEMBER 2014 No. 186

PUBLISHED BY AUTHORITY JOHN A. STRIJK, GOVERNMENT PRINTER AT 12.00 NOON
© STATE OF WESTERN AUSTRALIA

CONTENTS

PART 1

	Page
Acting Attorney General Designation Order (No. 5) 2014	4436
Casino Control (Authorised Games) Amendment Notice 2014.....	4436
Education and Care Services National Amendment Regulations (No. 2) 2014	4401
Health (Pesticides) Amendment Regulations (No. 2) 2014	4412
Health (Treatment of Sewage and Disposal of Effluent and Liquid Waste) Amendment Regulations (No. 2) 2014	4413
Mining Amendment Regulations (No. 4) 2014	4415
Police Districts Notice 2014.....	4420
Retail Trading Hours (Metropolitan Area) Variation Order 2014.....	4399
Retail Trading Hours (Shire of Esperance) Variation Order 2014	4400
RWWA Rules of Greyhound Racing 2008.....	4438
RWWA Rules of Harness Racing 2004.....	4438
RWWA Rules of Thoroughbred Racing 2004	4437
Shire of Ashburton—Fencing Amendment Local Law 2014.....	4414
Shire of Exmouth—	
Dogs Amendment Local Law 2014	4415
Exmouth Public Cemetery Amendment Local Law 2014.....	4415

PART 2

Consumer Protection	4439
Deceased Estates	4452
Education	4443
Fire and Emergency Services.....	4443
Fisheries	4444
Lands.....	4444
Local Government.....	4445
Minerals and Petroleum	4445
Planning	4449
Premier and Cabinet.....	4450
Training.....	4451

IMPORTANT COPYRIGHT NOTICE

© State of Western Australia

This work is copyright. Apart from any use as permitted under the *Copyright Act 1968*, no part may be reproduced by any process without written permission from the Attorney General for Western Australia. Inquiries in the first instance should be directed to the Government Printer, State Law Publisher, 10 William St, Perth 6000.

PUBLISHING DETAILS

The Western Australian *Government Gazette* is published by State Law Publisher for the State of Western Australia on Tuesday and Friday of each week unless disrupted by Public Holidays or unforeseen circumstances.

Special *Government Gazettes* containing notices of an urgent or particular nature are published periodically.

The following guidelines should be followed to ensure publication in the *Government Gazette*.

- Material submitted to the Executive Council prior to gazettal will require a copy of the signed Executive Council Minute Paper and in some cases the Parliamentary Counsel's Certificate.
- Copy must be lodged with the Sales and Editorial Section, State Law Publisher no later than 12 noon on Wednesday (Friday edition) or 12 noon on Friday (Tuesday edition).

Delivery address:

State Law Publisher
Basement Level,
10 William St. Perth, 6000
Telephone: 6552 6000 Fax: 9321 7536

- Inquiries regarding publication of notices can be directed to the Publications Officer on (08) 6552 6012.
- Lengthy or complicated notices should be forwarded early to allow for preparation. Failure to observe this request could result in the notice being held over.

If it is necessary through isolation or urgency to fax copy, confirmation is not required by post. *If original copy is forwarded later and published, the cost will be borne by the advertiser.*



GOVERNMENT GAZETTE

PUBLISHING DETAILS FOR CHRISTMAS 2014 AND NEW YEAR HOLIDAY PERIOD 2015

Publishing Dates and times	Closing Dates and Times for copy
Tuesday, 23 December 2014 at 12 noon	Friday, 19 December 2014 at 12 noon
Tuesday, 30 December 2014 at 12 noon	Wednesday, 24 December 2014 at 12 noon
Tuesday, 6 January 2015 at 12 noon	Friday, 2 January 2015 at 12 noon



— PART 1 —

CONSUMER PROTECTION

CP301*

Retail Trading Hours Act 1987

Retail Trading Hours (Metropolitan Area) Variation Order 2014

Made by the Minister for Commerce under section 12E of the Act.

1. Citation

This order is the *Retail Trading Hours (Metropolitan Area) Variation Order 2014*.

2. Commencement

This order comes into operation as follows —

- (a) clauses 1 and 2 — on the day on which this order is published in the *Gazette*;
- (b) the rest of the order — on the day after that day.

3. Variation of metropolitan area trading hours during Christmas 2014

- (1) In this clause —

Christmas 2014 means the period that begins on 5 December 2014 and ends on 31 December 2014 (both dates inclusive).

- (2) General retail shops, other than motor vehicle shops, in the metropolitan area are authorised to be open, at times when those shops would otherwise be required to be closed, on the days and during the periods referred to in the Table.

Table

Christmas 2014, other than 25 and 26 December 2014	Mondays, Tuesdays, Wednesdays, Thursdays and Fridays — from 7 a.m. until 9 p.m. Saturdays — from 7 a.m. until 6 p.m.
--	---

	Sundays — from 8 a.m. until 6 p.m.
26 December 2014	From 8 a.m. until 6 p.m.

4. Variation of metropolitan area trading hours on New Year's Day and Australia Day 2015

General retail shops, other than motor vehicle shops, in the metropolitan area are authorised to be open, at times when those shops would otherwise be required to be closed, on 1 and 26 January 2015, from 8 a.m. until 6 p.m.

5. Relationship with *Retail Trading Hours (Public Holidays) Order 2012*

This order has effect despite the *Retail Trading Hours (Public Holidays) Order 2012*.

M. MISCHIN, Minister for Commerce.

CP302*

Retail Trading Hours Act 1987

Retail Trading Hours (Shire of Esperance) Variation Order 2014

Made by the Minister for Commerce under section 12E of the Act.

1. Citation

This order is the *Retail Trading Hours (Shire of Esperance) Variation Order 2014*.

2. Commencement

This order comes into operation as follows —

- (a) clauses 1 and 2 — on the day on which this order is published in the *Gazette*;
- (b) the rest of the order — on the day after that day.

3. Variation of retail trading hours during Christmas periods

- (1) In this clause —

first Christmas period means the period in each year that begins on the second Sunday in December and ends on 23 December (both days inclusive);

second Christmas period means the period in each year that begins on the last Sunday before 23 December and ends on 23 December (both days inclusive).

- (2) General retail shops, other than motor vehicle shops, in the Esperance local government district are authorised to be open, at times when those shops would otherwise be required to be closed, on the days (as applicable in each year to the first Christmas period and the second Christmas period) and during the hours referred to in the Table.

Table

First Christmas period	Fridays — from 8 a.m. until 9 p.m. Sundays — from 10 a.m. until 4 p.m.
Second Christmas period	Monday, Tuesday, Wednesday and Friday — from 8 a.m. until 9 p.m.

M. MISCHIN, Minister for Commerce.

EDUCATION

ED301*

Education and Care Services National Law (WA) Act 2012

Education and Care Services National Amendment Regulations (No. 2) 2014

Made by the Governor in Executive Council.

1. Citation

These regulations are the *Education and Care Services National Amendment Regulations (No. 2) 2014*.

2. Commencement

These regulations come into operation as follows —

- (a) regulations 1 and 2 — on the day on which these regulations are published in the *Gazette*;
- (b) the rest of the regulations — on 1 December 2014.

3. Regulations amended

These regulations amend the *Education and Care Services National Regulations 2012*.

4. Regulation 4 amended

- (1) In regulation 4(1) insert in alphabetical order:

authorised emergency contact, in relation to a child, means a person named in the child's enrolment record as a person who is to be notified of an emergency involving the child if any parent of the child cannot be immediately contacted;

working with vulnerable people registration means a registration issued to a person under the *Registration to Work With Vulnerable People Act 2013* of Tasmania allowing the person to be engaged in childcare services.

- (2) In regulation 4(1) in the definition of ***working with vulnerable people check*** delete "jurisdiction." and insert:

jurisdiction;

5. Regulation 10 amended

In regulation 10(b)(iv):

- (a) in item (B) delete "Authority." and insert:

Authority; or

- (b) after item (B) insert:

- (C) has completed the percentage of total units of study required for completion of an approved early childhood teaching qualification determined by the National Authority.

6. Regulation 14 amended

In regulation 14(fc) delete "clearance;" and insert:

clearance or working with vulnerable people registration;

7. Regulation 20 amended

In regulation 20(gc) delete “clearance;” and insert:

clearance or working with vulnerable people registration;

8. Regulation 22 amended

In regulation 22(gc) delete “clearance;” and insert:

clearance or working with vulnerable people registration;

9. Regulation 31 amended

In regulation 31(c) delete “parents” and insert:

family members

Note:

At the end of amended regulation 31 the following note is to be inserted:

3 This regulation differs from regulation 31 of the national regulations made by the Ministerial Council.

10. Regulation 46 amended

In regulation 46(1)(i) delete “clearance.” and insert:

clearance or working with vulnerable people registration.

11. Regulation 50 amended

In regulation 50(b) before “the name of the school” insert:

if applicable,

12. Regulation 55 amended

(1) In regulation 55(1) delete “ensure that” and insert:

ensure that, within 3 months of the grant of the service approval,

(2) In regulation 55(2) delete “within 3 months of the grant of the service approval.” and insert:

on request.

13. Regulation 75 amended

In regulation 75(a) delete “parents” and insert:

family members

Note:

At the end of amended regulation 75 the following note is to be inserted:

2 This regulation differs from regulation 75 of the national regulations made by the Ministerial Council.

14. Regulation 80 amended

In regulation 80(1)(a), (2)(a) and (3)(a) delete “parents” and insert:

family members

Note:

At the end of amended regulation 80 the following note is to be inserted:

2 This regulation differs from regulation 80 of the national regulations made by the Ministerial Council.

15. Regulation 86 amended

In regulation 86 delete “the service” and insert:

the service, or if a parent cannot be immediately contacted, an authorised emergency contact for the child

Note:

At the end of amended regulation 86 the following note is to be inserted:

Note: This regulation differs from regulation 86 of the national regulations made by the Ministerial Council.

16. Regulation 92 amended

In regulation 92(3)(c) delete “administered;” and insert:

administered and the medical condition the medication is being used to treat;

Note:

At the end of amended regulation 92 the following note is to be inserted:

Note: This regulation differs from regulation 92 of the national regulations made by the Ministerial Council.

17. Regulation 94 amended

Delete regulation 94(2)(a) and insert:

- (a) a parent of the child, or if a parent of the child cannot be immediately contacted, an authorised emergency contact for the child;

Note:

At the end of amended regulation 94 the following note is to be inserted:

Note: This regulation differs from regulation 94 of the national regulations made by the Ministerial Council.

18. Regulation 98 amended

In regulation 98 delete “parents” and insert:

parents, family members and other adults who may need to be in contact about a child

Note:

At the end of amended regulation 98 the following note is to be inserted:

2 This regulation differs from regulation 98 of the national regulations made by the Ministerial Council.

19. Regulation 104 amended

After regulation 104(2) insert:

- (3) This regulation does not apply in respect of a family day care residence or a family day care venue if all the children being educated and cared for at that residence or venue as part of a family day care service are over preschool age.

20. Regulation 111 amended

In regulation 111(b) delete “parents” and insert:

family members

Note:

At the end of amended regulation 111 the following note is to be inserted:

2 This regulation differs from regulation 111 of the national regulations made by the Ministerial Council.

21. Regulation 117 amended

Delete regulation 117(1)(b) and insert:

- (b) either —
 - (i) is 1 metre or less above floor level; or
 - (ii) if the residence or family day care venue was approved before 1 December 2014, is 0.75 metres or less above floor level.

Note:

At the end of amended regulation 117 the following note is to be inserted:

- 2 This regulation differs from regulation 117 of the national regulations made by the Ministerial Council.

22. Regulation 126 amended

(1) After regulation 126(1) insert:

- (1A) The qualification requirements in subregulation (1)(b) do not apply to an educator if the educator has been employed by an approved provider on a probationary basis for not more than 3 months, at one or more centre-based services operated by the approved provider.
- (1B) Subregulation (1A) does not apply in relation to New South Wales or South Australia.

(2) In regulation 126(3) delete “that teacher” and insert:

that teacher, or a person taken to be an early childhood teacher under regulation 135(1)(b),

23. Regulation 136 amended

Delete regulation 136(2) and insert:

- (2) If children are being educated and cared for at service premises on the site of a school, it is sufficient for the purposes of subregulation (1) if the following are in attendance at the school site and immediately available in an emergency—
 - (a) an educator referred to in subregulation (1)(a) or at least one staff member of the school who holds a current approved first aid qualification;
 - (b) an educator referred to in subregulation (1)(b) or at least one staff member of the school who

- has undertaken current approved anaphylaxis management training;
- (c) an educator referred to in subregulation (1)(c) or at least one staff member of the school who has undertaken current approved emergency asthma management training.

24. Regulation 137 amended

Delete regulation 137(4) and insert:

- (4) The National Authority may publish on its website the following for the purposes of the definition of *actively working towards* a qualification —
 - (a) units of approved certificate III level education and care qualifications;
 - (b) the percentage of total units required for completion of an approved early childhood teaching qualification.

25. Regulation 146 amended

Delete regulation 146(f) and insert:

- (f) in relation to Tasmania, a record of the identifying number of the nominated supervisor's safety screening clearance or working with vulnerable people registration and the expiry date of that clearance or registration.

26. Regulation 147 amended

Delete regulation 147(f) and insert:

- (f) in relation to Tasmania, a record of the identifying number of the staff member's safety screening clearance or working with vulnerable people registration and the expiry date of that clearance or registration.

27. Regulation 157 amended

Delete regulation 157(4)(b) and insert:

- (b) the provider, supervisor or family day care educator reasonably believes that permitting the parent's entry would contravene a court order.

28. Regulation 160 amended

In regulation 160(3)(g) delete “parents;” and insert:

parents or any other family members;

Note:

At the end of amended regulation 160 the following note is to be inserted:

Note: This regulation differs from regulation 160 of the national regulations made by the Ministerial Council.

29. Regulation 162 amended

In regulation 162:

(a) in paragraph (g) delete “effect.” and insert:

effect; and

(b) after paragraph (g) insert:

(h) in relation to New South Wales, certificates for immunisation or exemption for the child, as required under section 87(1), (2) and (3) of the *Public Health Act 2010* of New South Wales.

30. Regulation 163 amended

In regulation 163(4C) delete “clearance.” and insert:

clearance or working with vulnerable people registration.

31. Regulation 185 amended

In regulation 185 delete “parents” and insert:

family members

Note:

At the end of amended regulation 185 the following note is to be inserted:

2 This regulation differs from regulation 185 of the national regulations made by the Ministerial Council.

32. Regulation 231 amended

In regulation 231(a)(iii) before “the name of the school” insert:

if applicable,

33. Chapter 7 Part 7.1 Division 1A inserted

After regulation 238 insert:

Division 1A — Prescribed classes of persons for grant of supervisor certificate

238A. Prescribed classes of persons for grant of supervisor certificate

Note: Regulation 238A of the national regulations made by the Ministerial Council does not apply as a law of WA.

34. Regulation 239A inserted

After regulation 239 insert:

239A. Centre-based services in remote and very remote areas — attendance of early childhood teachers

- (1) This regulation applies until 1 January 2018 to a centre-based service that is located in a remote area or a very remote area.
- (2) The centre-based service may meet the requirements of regulation 132, 133 or 134 for attendance of an early childhood teacher if the service has access to an early childhood teacher working with the service at least 20 per cent of the time that the service provides education and care.
- (3) To comply with subregulation (2), the early childhood teacher may be working with the service by means of information communication technology.
- (4) For the purposes of this regulation, the period that an early childhood teacher works with the centre-based service may be calculated on a quarterly basis.
- (5) In this regulation and regulation 240 —
ARIA+ score means the score calculated in accordance with the ARIA+ Index, produced by the University of Adelaide;

remote area, in relation to the location of a centre-based service, means a geographic area that is Remote Australia (average ARIA+ score greater than 5.92 but less than or equal to 10.53) in the *Australian Statistical Geography Standard: Volume 5 - Remoteness Structure*. Canberra, Australian Capital Territory: Australian Bureau of Statistics. Cat No. 1270.0.55.005;

very remote area, in relation to the location of a centre-based service, means a geographic area that is

Very Remote Australia (ARIA+ score greater than 10.53) in the *Australian Statistical Geography Standard: Volume 5 - Remoteness Structure*. Canberra, Australian Capital Territory: Australian Bureau of Statistics. Cat No. 1270.0.55.005.

35. Regulation 240 amended

Delete regulation 240(1) and insert:

- (1) This regulation applies to a centre-based service —
- (a) if the service is located in a remote area or a very remote area, until 1 January 2018; or
 - (b) otherwise, until 31 December 2015.

36. Regulation 241 amended

Delete regulation 241(1)(a) and insert:

- (a) was —
 - (i) recognised under the former education and care services law, or for the purposes of a preschool funding program, of any participating jurisdiction as an early childhood teacher; and
 - (ii) employed or engaged in a declared approved service as an early childhood teacher;
- or

37. Regulation 242 amended

In regulation 242(1) delete “1 January 2016.” and insert:

1 January 2018.

38. Regulation 243 amended

Delete regulation 243(a) and insert:

- (a) was —
 - (i) recognised under the former education and care services law of any participating jurisdiction as a diploma level educator; and

- (ii) employed or engaged in a declared approved service;

or

39. Regulation 244 amended

Delete regulation 244(a) and insert:

- (a) was —

- (i) recognised under the former education and care services law of any participating jurisdiction as a certificate III level educator; and
- (ii) employed or engaged in a declared approved service;

or

40. Chapter 7 Part 7.9 Division 1A heading replaced

Delete the heading to Chapter 7 Part 7.9 Division 1A and insert:

Division 1A — Exceeding National Quality Standard

41. Regulation 368A amended

In regulation 368A(1) delete “Standards” and insert:

Standard

Note: The heading to amended regulation 368A is to read:

Exceeding National Quality Standard: educational program and practice quality area

R. KENNEDY, Clerk of the Executive Council.

HEALTH

HE301*

Health Act 1911

**Health (Pesticides) Amendment Regulations
(No. 2) 2014**

Made by the Governor in Executive Council.

1. Citation

These regulations are the *Health (Pesticides) Amendment Regulations (No. 2) 2014*.

2. Commencement

These regulations come into operation as follows —

- (a) regulations 1 and 2 — on the day on which these regulations are published in the *Gazette*;
- (b) the rest of the regulations — on 1 December 2014.

3. Regulations amended

These regulations amend the *Health (Pesticides) Regulations 2011*.

4. Schedule 1 amended

In Schedule 1:

- (a) delete “280” (each occurrence) and insert:

308

- (b) delete “20” (each occurrence) and insert:

22

- (c) delete “10” (each occurrence) and insert:

11

- (d) delete “140” (each occurrence) and insert:

154

(e) delete “100” and insert:

110

R. KENNEDY, Clerk of the Executive Council.

HE302*

Health Act 1911

Health (Treatment of Sewage and Disposal of Effluent and Liquid Waste) Amendment Regulations (No. 2) 2014

Made by the Governor in Executive Council.

1. Citation

These regulations are the *Health (Treatment of Sewage and Disposal of Effluent and Liquid Waste) Amendment Regulations (No. 2) 2014*.

2. Commencement

These regulations come into operation as follows —

- (a) regulations 1 and 2 — on the day on which these regulations are published in the *Gazette*;
- (b) the rest of the regulations — on the day after that day.

3. Regulations amended

These regulations amend the *Health (Treatment of Sewage and Disposal of Effluent and Liquid Waste) Regulations 1974*.

4. Schedule 1 amended

In Schedule 1 item 2(a) delete “38.50” and insert:

42.35

R. KENNEDY, Clerk of the Executive Council.

LOCAL GOVERNMENT

LG301*

**DIVIDING FENCES ACT 1961
LOCAL GOVERNMENT ACT 1995**

Shire of Ashburton

FENCING AMENDMENT LOCAL LAW 2014

Under the powers conferred by the *Dividing Fences Act 1961*, the *Local Government Act 1995* and under all other powers enabling it, the Council of the Shire of Ashburton resolved on 19 November 2014 to make the following local law.

1. Citation

This local law is the *Shire of Ashburton Fencing Amendment Local Law 2014*.

2. Commencement

This local law comes into operation 14 days after the date of its publication in the *Government Gazette*.

3. Principal Local Law

In this local law, the *Shire of Ashburton Fencing Local Law 2014* as published in the *Government Gazette* on 11 April 2014 is referred to as the Principal Local Law. The Principal Local Law is amended.

4. Clause 1.5 amended

In clause 1.5 delete the definition for AS/NZS and replace with the following—

AS or AS/NZS means an Australian or Australian/New Zealand Standard as published by Standards Australia and as amended from time to time.

5. Clause 6.3 amended

Clause 6.3 is amended as follows—

- (a) in paragraph (a) delete “or substantially in”; and
- (b) in paragraph (b) delete ‘or substantially in’.

6. Part 2, Division 3 amended

In Part 2, Division 3 delete ‘AS1170’ and insert ‘AS/NZS 1170.0:2002 Structural design actions—General principles’.

7. Schedule 2 amended

In Schedule 2—

- (a) Delete ‘AS1170’ and insert ‘AS/NZS 1170.0:2002 Structural design actions—General principles’;
- (b) Delete ‘AS2870-1996’ and insert ‘AS 2870-2011 Residential slabs and footings’; and
- (c) Delete ‘AS2870-2011’ and insert ‘AS 2870-2011 Residential slabs and footings’.

8. Schedule 3 amended

In Schedule 3 delete ‘AS1170’ and insert ‘AS/NZS 1170.0:2002 Structural design actions—General principles’.

9. Schedule 4 amended

In Schedule 4 delete ‘AS1170’ and insert ‘AS/NZS 1170.0:2002 Structural design actions—General principles’.

10. Schedule 5 amended

In Schedule 5 delete ‘AS/NZS 3016:2002’ and insert ‘AS/NZS 3016:2002 Electrical installations—Electric security fences’.

Dated: 19 November 2014.

The Common Seal of the Shire of Ashburton was affixed by authority of a resolution of the Council in the presence of—

K. WHITE, Shire President.

N. HARTLEY, Chief Executive Officer.

LG302*

DOG ACT 1976*Shire of Exmouth***DOGS AMENDMENT LOCAL LAW 2014**

The *Shire of Exmouth Dogs Amendment Local Law 2014* will come into effect on 12 December 2014.

The purpose of the local law is to amend the *Shire of Exmouth Dogs Local Law 2000* to reflect recent amendments to the *Dog Act 1976* in relation to the process to designate areas where dogs are prohibited absolutely, and areas where dogs may be exercised off lead; and to increase modified penalties.

The effect is that the Local Law is amended and modified penalties increased.

The local law may be inspected at the Shire of Exmouth Administration Office at 22 Maidstone Crescent, between the hours of 8.00am and 4.00pm Monday to Friday, or refer to the Council's website www.exmouth.wa.gov.au

LG303*

CEMETERIES ACT 1986*Shire of Exmouth***EXMOUTH PUBLIC CEMETERY AMENDMENT LOCAL LAW 2014**

The *Shire of Exmouth Public Cemetery Amendment Local Law 2014* will come into effect on 12 December 2014.

The purpose of the local law is to amend the *Local Law Relating to the Exmouth Public Cemetery 2000* to allow an animal who is being used as an assistance animal as defined in the *Disability Discrimination Act 1992 (Commonwealth)* into the cemetery.

The effect is that the Local Law is amended to allow assistance animals into the cemetery.

The local law may be inspected at the Shire of Exmouth Administration Office at 22 Maidstone Crescent, between the hours of 8.00am and 4.00pm Monday to Friday, or refer to the Council's website www.exmouth.wa.gov.au

MINERALS AND PETROLEUM

MP301*

Mining Act 1978**Mining Amendment Regulations (No. 4) 2014**

Made by the Governor in Executive Council.

1. Citation

These regulations are the *Mining Amendment Regulations (No. 4) 2014*.

2. Commencement

These regulations come into operation as follows —

- (a) regulations 1 and 2 — on the day on which these regulations are published in the *Gazette*;
- (b) the rest of the regulations — on the day after that day.

3. Regulations amended

These regulations amend the *Mining Regulations 1981*.

4. Regulation 85 amended

- (1) In regulation 85(1) delete the definition of *royalty value*.
- (2) In regulation 85(1) insert in alphabetical order:

royalty value, in relation to —

- (a) a mineral other than gold or iron ore, means the gross invoice value of the mineral less any allowable deductions for the mineral; or
- (b) gold, means the royalty value of gold metal produced calculated in accordance with regulation 86AA(7); or
- (c) iron ore, has the meaning given in regulation 86AD(2);

shipping costs has the meaning given in regulation 86AD(1);

5. Regulation 85B amended

In regulation 85B(1):

- (a) in paragraph (c) delete “value” (2nd occurrence) and insert:

value,

- (b) delete paragraph (d) and insert:

- (d) the gross invoice value of the mineral and when it was paid;
- (daa) any allowable deductions for the mineral;
- (dab) in the case of iron ore, any shipping costs;

6. Regulation 86 amended

In regulation 86 in the Table in the item for Iron Ore (including magnetite):

- (a) delete:

fine ore (iron ore, excluding beneficiated ore, that will pass through a 6 mm mesh screen)		The rate is —
		(a) if the shipment date is before 1 July 2012 — 5.625% of the royalty value;
		(b) if the shipment date is on or after 1 July 2012 and before 1 July 2013 — 6.5% of the royalty value;

- | | | |
|--|--|--|
| | | (c) if the shipment date is on or after 1 July 2013 — 7.5% of the royalty value. |
|--|--|--|

- (b) delete “lump ore (iron ore, excluding beneficiated ore, that will not pass through a 6 mm mesh screen)” and insert:

iron ore other than beneficiated ore

7. Regulation 86AD inserted

After regulation 86AC insert:

86AD. Royalty value of iron ore

- (1) In this regulation —

grade, of iron ore, means the iron content of the ore expressed as the percentage of iron per dry metric tonne of ore;

Platts freight rate means —

- (a) the freight rate for capesize vessels on the Australia route published in the Platts index on the day the iron ore for which royalty is payable is first sold; or
- (b) if there is no freight rate as described in paragraph (a), the freight rate for capesize vessels on the Australia route last published in the Platts index before the day referred to in that paragraph;

Platts index means the table headed “Platts Daily Iron Ore Price Assessments” set out in the publication titled “SBB Steel Markets Daily” published by Platts (a division of McGraw Hill Financial);

Platts midpoint price means —

- (a) the daily iron ore midpoint price published in the Platts index on the day the iron ore for which royalty is payable is first sold; or
- (b) if there is no daily iron ore midpoint price as described in paragraph (a), the daily iron ore midpoint price last published in the Platts index before the day referred to in that paragraph;

shipping costs, for iron ore, means the amount, in Australian currency, of any of the following costs reasonably incurred after the shipment date by the person liable to pay the royalty for the ore in relation to shipping the ore —

- (a) freight costs adjusted for the following —
 - (i) address commission;

- (ii) despatch or demurrage at the port of discharge;
 - (b) dead freight costs;
 - (c) marine and cargo insurance costs;
 - (d) bunkering costs.
- (2) The royalty value of iron ore is —
 - (a) if the first sale of the ore is effected by delivery onto or from a ship exporting the ore from Australia (as evidenced by a bill of lading) — the gross invoice value of the ore less shipping costs for the ore; or
 - (b) in any other case — the reference amount for the ore.
- (3) The reference amount for iron ore is —
 - (a) the amount, in Australian currency, obtained by multiplying the quantity (in dry metric tonnes) of the ore in the form in which it is first sold (as set out in invoices relating to the sale) by the index price for the ore; less
 - (b) the amount, in Australian currency, obtained by multiplying the quantity (in wet metric tonnes) of the ore in the form in which it is first sold (as set out in invoices relating to the sale) by the index freight component for the ore.
- (4) For the purposes of subregulation (3)(a), but subject to subregulations (5) and (6), the index price for iron ore (the *royalty ore*) is —
 - (a) the Platts midpoint price for iron ore of the same grade as the royalty ore; or
 - (b) if there is no Platts midpoint price for iron ore of the same grade as the royalty ore — the price calculated in accordance with the following formula —

$$IP = MP \times \frac{G}{RG}$$

where —

IP is the index price;

MP is the Platts midpoint price for iron ore of the closest grade (the *reference grade*) to the grade of the royalty ore;

G is the percentage number of the grade of the royalty ore;

RG is the percentage number of the reference grade.

- (5) If the grade of the royalty ore, or the closest grade to the grade of the royalty ore, is 58%, the Platts midpoint price is the Platts midpoint price described as “58% Fe low Al CFR North China”.
- (6) If the grade of the royalty ore is halfway between 2 grades of iron ore listed in the Platts index, the lower of the 2 grades is to be taken to be the closest grade to the grade of the royalty ore.
- (7) For the purposes of subregulation (3)(b), the index freight component for iron ore is the Platts freight rate multiplied by 2.

8. Regulation 86A amended

- (1) After regulation 86A(5B) insert:

- (5C) In the case of iron ore —

- (a) if the royalty value of the ore is as described in regulation 86AD(2)(a) — royalties are, subject to subregulation (6), to be paid within 30 days after the end of the quarter during which the gross invoice value of the ore (or any part of that value) was paid by the purchaser of the ore; or
- (b) if the royalty value of the ore is as described in regulation 86AD(2)(b) — royalties are to be paid within 30 days after the end of the quarter during which the ore was sold.

- (2) In regulation 86A(5) delete “a mineral” and insert:

a mineral, other than gold or iron ore,

- (3) Delete regulation 86A(6) and insert:

- (6) In the case of a mineral, other than gold or iron ore to which subregulation (5C)(b) applies, the royalty for which is based on royalty value, royalties may be paid in part-payments in accordance with subregulation (7) if the gross invoice value of the mineral is paid in part-payments.

- (4) In regulation 86A(8) delete “value or allowable deductions” and insert:

value, allowable deductions or, in the case of iron ore, shipping costs

9. Regulation 87 amended

In regulation 87(1)(b) after “allowable deductions” insert:

or, in the case of iron ore, the shipping costs

R. KENNEDY, Clerk of the Executive Council.

POLICE

PO301*

Police Act 1892

Police Districts Notice 2014

Made by the Governor in Executive Council under section 39.

1. Citation

This notice is the *Police Districts Notice 2014*.

2. Commencement

This notice come into operation as follows —

- (a) clauses 1 and 2 — on the day on which this notice is published in the *Gazette*;
- (b) the rest of the notice — on 1 December 2014.

3. Police Districts established

- (1) The Police Districts defined in Schedule 1 are established for the purposes of the Act.
- (2) The plan in Schedule 2 shows the approximate boundaries of the Police Districts defined in Schedule 1 Division 1.
- (3) The plan in Schedule 3 shows the approximate boundaries of the Police Districts defined in Schedule 1 Division 2.

4. Notice revoked

The Police Districts Notice 2001 is revoked.

Schedule 1 — Police Districts

[cl. 3(1)]

Division 1 — Metropolitan Police Districts

District	Definition
North West Metropolitan	<p>The area consisting of all the land bounded by a line starting from the north-west corner of Two Rocks locality and extending —</p> <p>along the northern boundary of Two Rocks and Yanchep localities;</p> <p>then south along the eastern boundary of Yanchep, Pinjar, Mariginiup, Jandabup and Gngangara localities;</p> <p>then west along the southern boundary of Gngangara locality to the north-east corner of Landsdale locality;</p> <p>then south along the eastern boundary of Landsdale, Alexander Heights, Koondoola and Mirrabooka localities;</p> <p>then east along the northern boundary of Noranda locality;</p> <p>then south along the eastern boundary of Noranda locality to the south-west corner of Beechboro locality;</p> <p>then east along the northern boundary of Morley locality;</p> <p>then south along the eastern boundary and west along the southern boundary of Morley locality;</p> <p>then south-westerly along the eastern boundary and westerly along the southern boundary of Dianella locality;</p> <p>then west-south along the southern boundary of Yokine locality;</p> <p>then south along the eastern boundary of Menora locality;</p> <p>then west along the southern boundary of Menora, Coolbinia and Joondanna localities;</p> <p>then west along the southern boundary of Osborne Park locality to the north-east corner of Glendalough locality;</p> <p>then south-west along the eastern and southern boundary of Glendalough locality;</p> <p>then west along the southern boundary of Herdsman locality;</p> <p>then south along the eastern boundary of Churchlands and Floreat localities;</p> <p>then west-south along the southern boundary of Floreat locality;</p> <p>then south along the eastern boundary of Mount Claremont and Claremont localities;</p>

District	Definition
Central Metropolitan	<p>then east along the northern boundary of Dalkeith locality;</p> <p>then to a point located at 115°49'30.319"E, 31°59'57.67"S (centre of Swan River);</p> <p>then continuing along the centre of the Swan River in a south-westerly direction to the north-west corner of East Fremantle locality;</p> <p>then west along the northern boundary of East Fremantle locality to a point located at 115°45'35.654"E, 32°1'33.498"S;</p> <p>then north-west to the south corner of Mosman Park locality then continuing north-west along the southern boundary of Mosman Park locality;</p> <p>then north along the western boundary of Mosman Park, Cottesloe, Swanbourne, City Beach, Scarborough, Trigg, North Beach, Watermans Bay, Marmion, Sorrento, Hillarys, Kallaroo, Mullaloo, Ocean Reef, Iluka, Burns Beach, Tamala Park, Mindarie, Quinns Rock, Jindalee, Alkimos, Eglington, Yanchep and Two Rocks localities to the starting point.</p>
	<p>The area consisting of all the land bounded by a line starting from the north-west corner of Bullsbrook locality and extending —</p> <p>east along the northern boundary of Bullsbrook and Avon Valley National Park localities;</p> <p>then south along the eastern boundary of Avon Valley National Park locality;</p> <p>then east-south along the northern and eastern boundary of Gidgegannup locality to the north-west corner of Bailup locality;</p> <p>then east along the northern boundary of Bailup locality;</p> <p>then south along the eastern boundary of Bailup and Wooroloo localities;</p> <p>then south-east along the eastern boundary of The Lakes and Malmalling localities;</p> <p>then west along the southern boundary of Malmalling locality;</p> <p>then south along the eastern boundary of Sawyers Valley locality;</p> <p>then south-west along the eastern and southern boundary of Pickering Brook locality;</p> <p>then west along the southern and western boundary of Canning Mills locality;</p> <p>then west along the southern boundary of Lesmurdie and Wattle Grove localities;</p> <p>then north along the western boundary of Wattle Grove, Forrestfield and High Wycombe localities;</p>

District**Definition**

then west along the southern boundary of South Guildford locality;

then to a point at 115°57'12.007"E, 31°55'12.026"S (centre of Swan River);

then continuing in a south-west direction down the middle of the Swan River to a point at 115°53'52.459"E, 31°57'6.359"S;

then south-west to the north-west corner of Rivervale locality;

then south-west along the eastern and southern boundary of Burswood locality;

then to a point at 115°53'8.968"E, 31°57'59.975"S (centre of Swan River);

then continuing down the centre of the Swan River in a southerly direction to a point located at 115°49'30.319"E, 31°59'57.67"S;

then to the north-east corner of Dalkeith locality;

then west along the northern boundary of Dalkeith locality;

then north along the western boundary of Nedlands, Karrakatta and Shenton Park localities;

then east along the northern boundary of Shenton Park locality;

then north along the western boundary of Jolimont, Wembley and Mount Hawthorn localities;

then east along the northern boundary of Mount Hawthorn locality;

then south-east along the southern boundary of Coolbinia and Menora localities;

then north along the western boundary of Mount Lawley, Inglewood and Bedford localities;

then south-east along the eastern and northern boundary of Bedford, Embleton and Bayswater localities;

then north along the eastern boundary of Eden Hill and Kiara localities;

then west-north along the southern and western boundary of Beechboro locality;

then west along the southern boundary of Malaga locality;

then north along the western boundary of Malaga, Ballajura, Cullacabardee, Lexia, Melaleuca and Bullsbrook localities to the starting point.

District	Definition
South Metropolitan	<p data-bbox="488 286 1203 383">The area consisting of all the land bounded by a line starting from the north-west corner of North Fremantle locality and extending —</p> <p data-bbox="488 405 1203 501">generally easterly and south-easterly along the boundary of North Fremantle locality to its intersection with the left bank of the Swan River;</p> <p data-bbox="488 524 1161 586">then to a point at 115°45'35.654"E, 32°1'33.498"S on the right bank of the Swan River;</p> <p data-bbox="488 609 1150 672">then east along the northern boundary of East Fremantle locality;</p> <p data-bbox="488 694 1102 757">then along the centre of the Swan River to a point at 115°50'17.751"E, 31°58'47.314"S;</p> <p data-bbox="488 779 1198 842">then in a southerly direction along the centre of the Canning River to the south-east corner of Applecross locality;</p> <p data-bbox="488 864 1150 927">then generally southerly along the eastern boundaries of Mount Pleasant and Brentwood localities;</p> <p data-bbox="488 949 1203 978">then east along the northern boundary of Bull Creek locality;</p> <p data-bbox="488 1001 1171 1030">then south along the east boundary of Bull Creek locality;</p> <p data-bbox="488 1052 1139 1081">then east along northern boundary of Leeming locality;</p> <p data-bbox="488 1104 1139 1133">then south along the east boundary of Leeming locality;</p> <p data-bbox="488 1155 1187 1218">then south-east along the eastern boundary of Jandakot and Banjup localities;</p> <p data-bbox="488 1240 1155 1303">then west along southern boundary of Banjup and Aubin Grove localities;</p> <p data-bbox="488 1326 1177 1388">then southerly along the eastern boundary of Mandogalup, The Spectacles and Bertram localities;</p> <p data-bbox="488 1411 1187 1473">then east along the northern boundary and then south along the eastern boundary of Wellard locality;</p> <p data-bbox="488 1496 1187 1559">then south-east along the northern boundary and then south along the eastern boundary of Baldivis locality;</p> <p data-bbox="488 1581 1166 1610">then south along the eastern boundary of Karnup locality;</p> <p data-bbox="488 1632 1118 1695">then east along the northern boundary of Keralup and Keysbrook localities;</p> <p data-bbox="488 1718 1187 1780">then south along the eastern boundary of Keysbrook, Solus and Banksiadale localities;</p> <p data-bbox="488 1803 1219 1865">then generally in a westerly then southerly direction along the southern boundary of Banksiadale locality until the intersection with the north-east corner of Inglehope locality;</p> <p data-bbox="488 1888 1203 2002">then generally south-westerly along the eastern and southern boundary of Inglehope locality until the intersection with the north-east corner of Etmilyn locality;</p> <p data-bbox="488 2024 1123 2096">then south along the eastern boundary, west along the southern boundary and north-west along the southern boundary of Etmilyn locality;</p>

District	Definition
	<p>then west along the southern boundary of Dwellingup and Teesdale localities to the intersection with the south-east corner of Meelon locality;</p> <p>then west along the southern boundary of Meelon, Coolup, West Coolup, Herron and Clifton localities;</p> <p>then generally northerly along the western boundaries of Clifton, Bouvard, Dawesville, Wannanup, Falcon, Halls Head, Mandurah, Silver Sands, San Remo, Madora Bay, Singleton, Golden Bay, Secret Harbour, Port Kennedy, Warnbro and Waikiki localities;</p> <p>then west along the southern boundary of Safety Bay and Shoalwater localities;</p> <p>then north along the western boundary of Shoalwater, Peron, Rockingham, East Rockingham, Kwinana Beach, Naval Base, Henderson, Coogee, North Coogee, South Fremantle, Fremantle and North Fremantle localities to the starting point, including Garden Island and Rottnest Island localities.</p>
South East Metropolitan	<p>The area consisting of all the land bounded by a line starting from a point being at 115°50'17.751"E, 31°58'47.314"S (centre of the Swan River) then continuing along the centre of the Swan River to a point at 115°53'8.968"E, 31°57'59.975"S then continuing —</p> <p>south-easterly along the boundary of East Perth locality to the south-west corner;</p> <p>then north-east along East Perth locality boundary to the north-west corner of Victoria Park locality;</p> <p>then along the northern boundary of Victoria Park locality;</p> <p>then along the eastern boundary of Burswood locality;</p> <p>then north-west along the eastern boundary of Burswood locality to the north-west corner of Rivervale locality then continuing at 90 degrees north-east from this point to a point at 115°53'52.459"E, 31°57'6.359"S;</p> <p>then continuing along the centre of the Swan River to a point at 115°57'12.007"E, 31°55'12.026"S then south-east to the north-east corner of Ascot locality;</p> <p>then south-east along the eastern boundary of Ascot and Redcliffe localities to the intersection with the south-west corner of South Guildford locality;</p> <p>then along the northern and eastern boundary of Perth Airport locality;</p> <p>then south-east then south-west along the eastern boundary to the south-east corner of Kewdale locality;</p> <p>then south along the eastern boundary to the south-east corner of Welshpool locality;</p> <p>then along the northern boundary of Kenwick locality;</p>

District**Definition**

then north and north-easterly along the northern and eastern boundary of Orange Grove locality;

then east, south-easterly along the eastern boundary of Martin locality to the north-west corner of Karragullen locality;

then easterly along the northern boundary of Karragullen locality to the intersection with Lesley locality;

then along the northern and eastern boundaries to the south east corner of Lesley locality;

then along the eastern boundary to the south-east corner of Ashendon locality;

then westerly along the southern boundary of Ashendon locality to the north-east corner of Jarrahdale locality;

then south along the eastern boundary and west along the southern boundary of Jarrahdale locality to the intersection with Serpentine locality;

then west along the southern boundary of Serpentine and Hopeland localities;

then north along the western boundary of Hopeland, Mardella and Oldbury localities to the south-east corner of Casuarina locality;

then west along the southern boundary of Casuarina locality;

then north along the western boundary of Casuarina, Anketell and Wandí localities;

then east to the north-east corner of Wandí locality;

then north along the western boundary of Forrestdale and Piara Waters localities;

then north along the western boundary of Canning Vale locality to the intersection with Willetton locality;

then along the southern and western boundary of Willetton locality to the intersection with Rossmoyne locality;

then along the southern then western boundary of Rossmoyne locality to the intersection with Brentwood locality;

then north along the eastern boundary of Brentwood and Mount Pleasant localities to the north-east corner of Mount Pleasant locality then to the starting point.

Division 2 — Regional Police Districts**District****Definition**

Kimberley
District

The area consisting of all the land bounded by a line starting from the south-west corner of Eighty Mile Beach locality and extending —

along the western boundary of Eighty Mile Beach, Lagrange, Roebuck localities;

District	Definition
	<p>then west along the southern boundary of Broome and Minyirr localities;</p> <p>then north along the western boundary of Cable Beach, Bilingurr and Waterbank localities;</p> <p>then along the northern boundary of Dampier Peninsula locality;</p> <p>then along the eastern boundary of Willare locality;</p> <p>then along the western boundary of Derby, Meda, Kimbolton, Prince Regent River and Mitchell Plateau localities;</p> <p>then along the northern boundary of Drysdale River, Oombulgurri and Cambridge Gulf localities;</p> <p>then south along the eastern boundary of Cambridge Gulf, Kununurra, Lake Argyle, Ord River, Sturt Creek and Tanami localities;</p> <p>then west-north along the southern boundary of Tanami locality;</p> <p>then along the southern boundary of St George Ranges, Gingerah and Eighty Mile Beach localities to the starting point.</p>
Pilbara District	<p>The area consisting of all the land bounded by a line starting from the south-west corner of Coral Bay locality and extending —</p> <p>north along the western boundary of Coral Bay, Ningaloo, Cape Range National Park and North West Cape localities;</p> <p>then south along the eastern boundary of North West Cape, Exmouth and Learmonth localities;</p> <p>then generally in an easterly direction along the northern boundary of Exmouth Gulf locality;</p> <p>then north-east along the western boundary of Talandji, Onslow, Peedamulla, Mardie and Dampier Archipelago localities;</p> <p>then east along the northern boundary of Dampier Archipelago, Point Samson, Sherlock, Ballaballa, Mundabullangana, Boodarie, Finucane, Port Hedland, Pippingarra, De Grey and Pardoo localities;</p> <p>then south along the eastern boundary of Pardoo locality;</p> <p>then generally in an easterly direction along the northern boundary of Telfer locality;</p> <p>then south along the eastern boundary of Telfer locality to the North West corner Lake Mackay (NT) locality;</p> <p>then west to a point at 126°30'00"E, 22°30'00"S;</p> <p>then south to a point at 126°30'00"E, 23°26'52"S (intersection with Gibson Desert North locality);</p>

District	Definition
	<p>then west along the southern boundary of Gibson Desert North and Tefer localities to the intersection with Newman locality;</p> <p>then south-west along the eastern and southern boundary of Newman locality;</p> <p>then in a southerly direction along the eastern boundary of Capricorn locality;</p> <p>then in a southerly direction along the eastern boundary of Kumarina locality to the intersection with the south-east corner of pastoral lease L 3114 1126 (Kumarina);</p> <p>then west along the southern boundary of pastoral lease L 3114 1126 and Reserve No. 35104 to the intersection with Kumarina locality;</p> <p>then generally north-westerly along the western boundary of Kumarina locality;</p> <p>then north to the intersection with Capricorn locality;</p> <p>then west along the southern boundary and north along the eastern boundary of Angelo River locality to the south-east corner of Innawanga locality;</p> <p>then west along the southern boundary of Innawanga, Yannarie and Coral Bay localities to the starting point including Barrow Island locality and all islands associated with Mardie locality.</p>
Mid West — Gascoyne District	<p>The area consisting of all the land bounded by a line starting from the south-west corner of Wedge Island locality and extending —</p> <p>north along the western boundary of Wedge Island, Grey, Nambung, Cervantes, Jurien Bay, Green Head, Leeman, Eneabba, Arrowsmith, Mount Adams, Port Denison, Dongara, Bonniefield, Bookara, South Greenough, Greenough, Cape Burney, Tarcoola Beach, Mahomets Flats, Beachlands, West End, Geraldton, Beresford, Bluff Point, Sunset Beach, Glenfield, Drummond Cove, Buller, Oakajee, Howatharra, Bowes, Sandy Gully, Horrocks, Yallabatharra, Gregory, Kalbarri National Park, Kalbarri, Zuytdorp, Tamala, Carrarang, and Dirk Hartog Island localities;</p> <p>then south and north-east along the northern boundary of Shark Bay locality;</p> <p>then north along the western boundary of Inggarda locality to the intersection with Babbage Island locality;</p> <p>then along the western boundary of Babbage Island, Inggarda, Macleod and Lyndon localities;</p> <p>then east along the northern boundary of Lyndon, West Lyons River, East Lyons River, Peak Hill and Kumarina localities;</p>

District	Definition
	<p>then south along the eastern boundary of Kumarina and Meekatharra localities;</p> <p>then easterly, southerly and westerly along the northern, eastern and southern boundary of Sandstone locality to the south-west corner of Sandstone locality;</p> <p>then west along the southern boundary of Sandstone, Paynes Find and Bunjil localities;</p> <p>then south along the eastern boundary of Latham and Maya localities;</p> <p>then west along the southern boundary of Maya locality;</p> <p>then south along the eastern boundary of Marchagee and Gunyidi localities;</p> <p>then west along the southern boundary of Gunyidi, Eganu and Warradarge localities to the north-east corner of Hill River locality;</p> <p>then south along the east boundary of Hill River locality;</p> <p>then along the western boundary of the Brand Highway in a southerly direction to the intersection with the south-east boundary of Cataby locality;</p> <p>then south along the eastern boundary of Mimegarra locality;</p> <p>then south to the south-west corner of Yathroo locality;</p> <p>then along the western boundary of Brand Highway to the south-east corner of Mimegarra locality;</p> <p>then west along the southern boundary of Mimegarra and Wedge Island localities to the starting point.</p>
Wheatbelt District	<p>The area consisting of all the land bounded by a line starting from the south-west corner of Wilbinga locality and extending —</p> <p>north along the western edge of Wilinga, Caraban, Guilderton, Gabbadah, Seabird, Breton Bay, Ledge Point, Lancelin and Nilgen localities;</p> <p>then east-south along the northern and eastern boundary of Nilgen locality;</p> <p>then east along the northern boundary of Orange Springs locality to the north-east corner of Red Gully locality;</p> <p>then north along the western side of Brand Highway to the south-east corner of Mimegarra locality;</p> <p>then north along the eastern boundary of Yatheroo locality;</p> <p>then along the eastern boundary of Cataby locality to the intersection with the Brand Highway;</p> <p>then north-west along the western side of Brand Highway to the intersection with Cataby locality;</p>

District	Definition
	<p>then north-west along the boundary of Cataby locality until the intersection with Brand Highway;</p> <p>then north along the western side of Brand Highway to the intersection with Badgingarra locality;</p> <p>then north along the boundary of Badgingarra locality to the south-west corner of Boothendarra locality;</p> <p>then north along the western boundary of Boothendarra locality;</p> <p>then east along the northern boundary of Boothendarra and Watheroo localities;</p> <p>then north along the western boundary of Dalwallinu, Mamoon, Wubin and Buntine localities;</p> <p>then east along the northern boundary of Buntine locality;</p> <p>then north along the western boundary of Jibberding locality;</p> <p>then east along the northern boundary of Jibberding, Goodlands, Mouroubra, Bimbijy, Karroun Hill, Mount Jackson and Lake Deborah localities;</p> <p>then south along the eastern boundary of Lake Deborah, Yellowdine, Mount Palmer, Parker Range and Mount Holland localities;</p> <p>then west along the southern boundary of Mount Holland, Woollocutty, South Kumminin, Babakin, Shackleton, Kwolyin, Wamenusking, South Quairading, Bally Bally, Kokeby, Dale, Westdale and Flint localities;</p> <p>then north along the western boundary of Flint, Flynn, Mount Observation, Woottating, Copley, Wundowie and Morangup localities;</p> <p>then west along the southern boundary of Moondyne, Lower Chittering, Muchea, Yeal and Wilbinga localities to the starting point.</p>
South West District	<p>The area consisting of all the land bounded by a line starting from the North West corner of Preston Beach locality and extending —</p> <p>east along the northern boundary of Preston Beach, Lake Clifton, Waroona and Nanga Brook localities;</p> <p>then south along the eastern boundary of Nanga Brook and Hoffman localities;</p> <p>then east-south along the northern and eastern boundary of Yourdamung Lake locality;</p> <p>then south along the eastern boundary of Buckingham, Muja and Cardiff localities;</p> <p>then east along the northern boundary of Mcalinden, Dinninup and Kulikup localities;</p>

District	Definition
	<p>then south along the eastern boundary of Kulikup, Scotts Brook, Chowerup, Mordalup and Lake Muir localities;</p> <p>then west along the southern boundary of Lake Muir locality;</p> <p>then south along the eastern boundary of Shannon locality;</p> <p>then west along the southern boundary of Shannon locality until the intersection with Shannon River;</p> <p>then south along the western edge of Shannon River until the intersection with the north-west corner of Broke Inlet;</p> <p>then south along the western edge of Broke Inlet until the intersection with the southern boundary of Broke locality;</p> <p>then west along the southern boundary of Broke and Windy Harbour localities;</p> <p>then north along the western boundary of Windy Harbour, Meerup, Callcup, Yeagarup, Lake Jasper and Scott River East localities;</p> <p>then west along the southern boundary of Scott River, East Augusta, Augusta and Leeuwin localities;</p> <p>then along the western boundary of Leeuwin, Deepdene, Hamelin Bay, Boranup, Redgate, Gnarabup, Prevelly, Burnside, Gracetown, Wilyabrup, Yallingup and Naturaliste localities;</p> <p>then south-east along northern boundary of Naturaliste and Eagle Bay localities;</p> <p>then south along the eastern boundary of Dunsborough locality;</p> <p>then south along the eastern boundary of Quindalup locality;</p> <p>then east along the northern boundary of Anniebrook, Marybrook, Siesta Park, Abbey, Broadwater, West Busselton, Busselton and Geographe localities;</p> <p>then north along the western boundary of Wonnerup, Forrest Beach, Peppermint Grove Beach, Stirling Estate, Stratham, Dalyellup, Usher, Withers, South Bunbury and Bunbury localities;</p> <p>then east along the northern boundary of Bunbury locality;</p> <p>then along the western boundary of Vittoria, Leschenault, Parkfield, Binningup, Myalup and Preston Beach localities to the starting point.</p>
Great Southern District	<p>The area consisting of all the land bounded by a line starting from the north-west corner of Mount Cooke locality and extending —</p> <p>east along the northern boundary of Mount Cooke, Jelcobine, Brookton, Aldersyde, Bulyee, Adamsvale, Bilbarin, Hurrenkutten, Kondinin, Karlgarin, Hyden and Forrestania localities;</p>

District**Definition**

then south along the eastern boundary of Forrestania locality;
then east along the northern boundary of Hatter Hill locality;
then west-south along the western and southern boundary of North Cascade locality;
then south along the eastern boundary of Munglinup locality;
then west along the southern boundary of Jerdacuttup, Hopetoun, Fitzgerald River National Park, Bremer Bay, Boxwood Hill, Wellstead, Mettler, Green Range, Cheynes, Manypeaks, Nanarup and Kalgan localities;
then north along the western boundary of Kalgan locality to the south-east corner of Lower King locality;
then along the southern boundary of Lower King locality to the north-west corner of Bayonet Head locality;
then south along the eastern boundary of Bayonet Head and Emu Point localities;
then west along the south boundary of Collingwood and Seppings localities;
then south along the eastern boundary of Middleton Beach locality;
then west along the southern boundary of Port Albany, Albany, Mount Melville and Mount Elphinstone localities;
then south along the eastern boundary of Robinson locality;
then east along the northern boundary of Torndirrup, Little Grove, Big Grove and Vancouver Peninsula localities;
then south along the eastern boundary of Goode Beach locality;
then east along the northern boundary of Frenchman Bay locality;
then easterly, southerly and westerly along the northern, eastern and southern boundary of Torndirrup locality;
then west along the southern boundary of Sandpatch, Elleker, Torbay, Kronkup, West Cape Howe, Bornholm, Lowlands, Nullaki, Ocean Beach, William Bay, Parryville, Bow Bridge, Peaceful Bay and Nornalup localities;
then west along the southern boundary of Broke locality until the intersection with the south-west corner of Broke Inlet;
then east-west along the western edge of Broke Inlet until the intersection with Shannon River;
then north along the western edge of Shannon River until the intersection with the northern boundary of Broke locality;
then east along the northern boundary of Broke locality;
then north along the western and northern boundary of North Walpole locality;

District	Definition
	<p>then north along the western boundary of Frankland River, Mobrup, Orchid Valley, Qualeup and Changerup localities;</p> <p>then west along the southern boundary of Moodiarrup and Trigwell localities;</p> <p>then north along the western boundary of Bowelling, Williams and Quindanning localities;</p> <p>then west along the southern boundary of Lower Hotham and Upper Murray localities;</p> <p>then north along the western boundary of Wuraming, Mount Wells and Mount Cooke localities to the starting point.</p>
Goldfields-Esperance District	<p>The area consisting of all the land bounded by a line starting from the north-west corner of Little Sandy Desert locality and extending —</p> <p>east along the northern boundary of Little Sandy Desert locality;</p> <p>then east along the northern boundary of Gibson Desert South to a point at 126°30'00"E, 23°26'52"S;</p> <p>then north to a point at 126°30'00"E, 22°30'00"S;</p> <p>then east to the north-east corner of Lake Mackay (NT) locality;</p> <p>then south along the eastern boundary of Lake Mackay (NT) and Petermann (NT) localities;</p> <p>then south to a point at 130°00'00"E, 26°30'00"S;</p> <p>then west to a point at 129°30'00"E, 26°30'00"S;</p> <p>then south to a point at 129°30'00"E, 28°00'00"S;</p> <p>then south to a point at 129°00'00"E, 28°00'00"S;</p> <p>then south along the eastern boundary of Beadell, Plumridge Lakes, Forrest and Eucla localities;</p> <p>then westerly along the southern boundary of Eucla, Mundrabilla, Madura, Cocklebidy, Caiguna, Balladonia, Israelite Bay, Cape Arid, Howick, Condingup and Cape Le Grand localities;</p> <p>then north along the western boundary of Merivale locality;</p> <p>then west along the southern boundary of Bandy Creek and Castletown localities;</p> <p>then south along the eastern boundary of Chadwick and Esperance localities;</p> <p>then west along the southern boundary of West Beach, Dalyup, Coomalbidup and East Munglinup localities;</p> <p>then north-west along the western boundary of East Munglinup and Cascade localities;</p>

District**Definition**

then west-east along the western boundary of North Cascade locality;

then west along the southern boundary of Norseman locality;

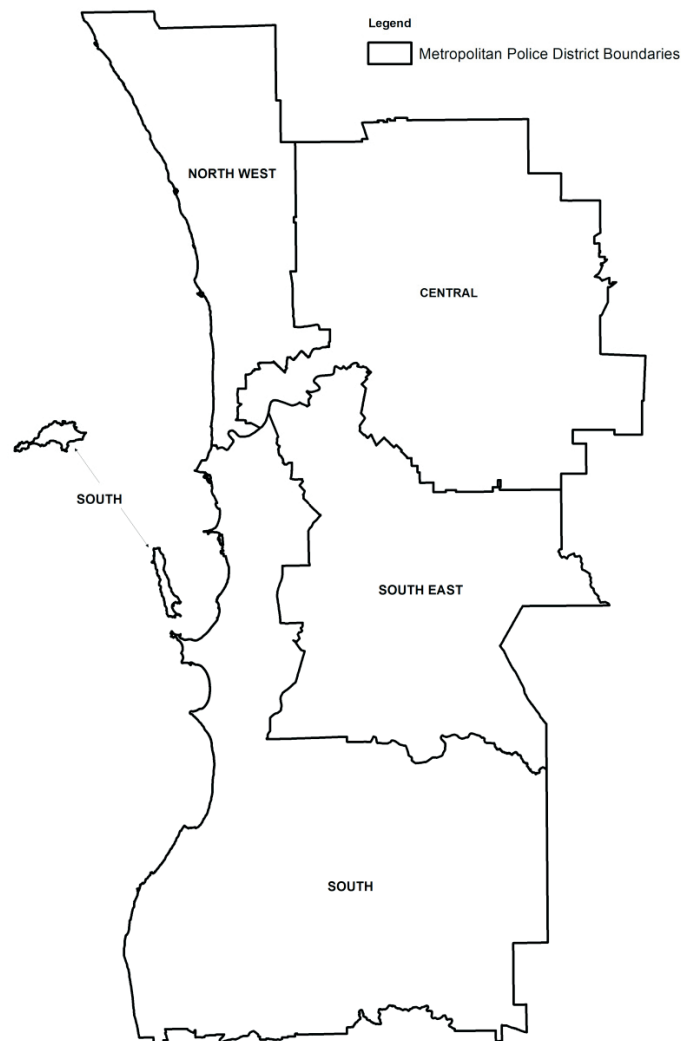
then north along the western boundary of Norseman, Victoria Rock, Boorabbin and Wallaroo localities;

then west along the southern boundary of Ularring locality;

then north along the western boundary of Ularring, Leinster, Sir Samuel, Wiluna and Little Sandy Desert localities to the starting point.

Schedule 2 — Plan of Metropolitan Police Districts

[cl. 3(2)]

WESTERN AUSTRALIAN POLICE METROPOLITAN DISTRICTS

Schedule 3 — Plan of Regional Police Districts

[cl. 3(3)]

WESTERN AUSTRALIAN POLICE REGIONAL DISTRICTS

R. KENNEDY, Clerk of the Executive Council.

PREMIER AND CABINET

PR301*

Supreme Court Act 1935

**Acting Attorney General Designation Order
(No. 5) 2014**

Made by the Governor in Executive Council.

1. Citation

This order is the *Acting Attorney General Designation Order (No. 5) 2014*.

2. Minister designated

Under the *Supreme Court Act 1935* section 154, the Honourable Albert Paul Jacob MLA, the Minister for Environment; Heritage, is designated as the Minister of the State —

- (a) who may exercise the powers referred to in section 154(3) of that Act; and
- (b) by, to or with reference to whom acts may be done under section 154(4) of that Act,

during the period 17 December 2014 to 6 January 2015 (both dates inclusive).

R. KENNEDY, Clerk of the Executive Council.

RACING, GAMING AND LIQUOR

RA301*

Casino Control Act 1984

**Casino Control (Authorised Games)
Amendment Notice 2014**

Given by the Gaming and Wagering Commission of Western Australia under section 22(1) of the Act.

1. Citation

This notice is the *Casino Control (Authorised Games) Amendment Notice 2014*.

2. Commencement

This notice comes into operation as follows —

- (a) clauses 1 and 2 — on the day on which this notice is published in the *Gazette*;
- (b) the rest of the notice — on the day after that day.

3. Notice amended

This notice amends the *Casino Control (Authorised Games) Notice 2011*.

4. Clause 3 amended

In clause 3 in the Table in the item relating to poker insert in alphabetical order:

• Crown Hold'em Poker
• Crown Stud Poker

Dated: 25 November 2014.

Sealed by the Gaming and Wagering
Commission of Western Australia in the
presence of —

B. A. SARGEANT, Chairperson.

T. FISHER, Member.

(L.S.)

RA302*

RACING AND WAGERING WESTERN AUSTRALIA ACT 2003
RWWA RULES OF THOROUGHBRED RACING 2004

In accordance with Section 45 (1) (a) of the *Racing and Wagering Western Australia Act 2003*, notice is hereby given that the Board of Racing and Wagering WA on 24 November 2014 resolved to amend the *RWWA Rules of Thoroughbred Racing 2004* as follows—

Amendments to Australian Racing Rules (National Rules)

Delete and replace “**Official Racing Laboratory**” in AR.1 as follows—

“**Official Racing Laboratory**” means an analytical racing laboratory that is accredited by the National Association of Testing Authorities or by a similar authority in an overseas country, and is approved by the Australian Racing Board and published in the *Racing Calendar*.

Note: The following have been approved by the Australian Racing Board—

Australian Racing Forensic Laboratory, Sydney
Queensland Government Racing Science Centre, Brisbane
Racing Analytical Services Limited, Melbourne
Racing Chemistry Laboratory, Chemistry Centre (W.A.), Perth
The Hong Kong Jockey Club Racing Laboratory, Sha Tin, Hong Kong
New Zealand Racing Laboratory Services Limited, Avondale, Auckland, New Zealand
Horseracing Forensic Laboratory, Fordham, Ely, Cambridgeshire, United Kingdom

Australian Sports Drug Testing Laboratory, Sydney
ChemCentre, Western Australia

National Measurement Institute (NMI), Sydney (trace element analysis)

Amend AR.178C(1)(g) to take effect as of 1 January 2015

Delete and replace AR.178F to take effect as of 1 January 2015

Amendment to Local Rules

Amend Local Rule 81G.

A copy of the above rules may be obtained during office hours from the RWWA offices at 14 Hasler Road, Osborne Park 6017, WA or Racing and Wagering Western Australia website, www.rwwa.com.au.

RICHARD BURT, Chief Executive Officer.

RA303*

RACING AND WAGERING WESTERN AUSTRALIA ACT 2003

RWWA RULES OF HARNESS RACING 2004

In accordance with Section 45 (1) (b) of the *Racing and Wagering Western Australia Act 2003*, notice is hereby given that the Board of Racing and Wagering WA on 24 November 2014 resolved that the *RWWA Rules of Harness Racing 2004* be amended with as follows—

Amendments to National Rules

Amend dictionary definition in Schedule 1;

Amend Definition—**Drug of Abuse**

- Add new sub-paragraph (iii)
- Renumber existing sub-paragraph (iii) to sub-paragraph (iv)

To read—

“**Drug of Abuse**” means—

- (iii) Any substance as defined by sub-paragraph (ii) hereof is a drug of abuse for the purposes of Rules 251 and 252 of these Rules.
- (iv) For the purposes of determining whether a substance is a drug of abuse, any declaration by the Australian Racing Board shall prevail over any document published by Standards Australia.

Amend Rules 26(1), 119C(1), 193(5) and 254A.

Add new rule 188A(2)(k).

Amendments to Local Rules

Amend Local Rules 254(1)(a), 254(1)(d) and 285A(10).

A copy of the above rules may be obtained during office hours from the RWWA offices at 14 Hasler Road, Osborne Park 6017, WA or Racing and Wagering Western Australia website, www.rwwa.com.au.

RICHARD BURT, Chief Executive Officer.

RA304*

RACING AND WAGERING WESTERN AUSTRALIA ACT 2003

RWWA RULES OF GREYHOUND RACING 2008

In accordance with Section 45 (1) (c) of the *Racing and Wagering Western Australia Act 2003*, notice is hereby given that the Board of Racing and Wagering WA on 24 November 2014 resolved to amend the *RWWA Rules of Greyhound Racing 2008* with effect from 1st January 2015 as follows—

Amendments to National Rules

Amend section 3. of the Definition of “**Exempted Substance**” in R1 as follows—

- 3. Antiparasitics approved and registered for the use on canines, with the exception of Levamisole and its metabolites when detected in a sample taken from a greyhound.

Amend rules R84A(4)(a), R84A(4)(c), R87(1) and R99(2)(d).

A copy of the above rules may be obtained during office hours from the RWWA offices at 14 Hasler Road, Osborne Park 6017, WA or Racing and Wagering Western Australia website, www.rwwa.com.au.

RICHARD BURT, Chief Executive Officer.

— PART 2 —

CONSUMER PROTECTION

CP401***ASSOCIATIONS INCORPORATION ACT 1987****REINSTATED ASSOCIATION****MALAYSIA-SINGAPORE AUSTRALIA SOCIETY—A0800027K**

Notice is hereby given that the incorporation of the above-named association has been re-instated pursuant to Section 35(4) of the *Associations Incorporation Act 1987*.

Dated: 21 November 2014.

DAVID HILLYARD, Director, Retail and Services
for Commissioner for Consumer Protection.

CP402***RETAIL TRADING HOURS ACT 1987****RETAIL TRADING HOURS (SHIRE OF KATANNING) CHRISTMAS VARIATION ORDER 2014**

Made by the Minister for Commerce under section 12E of the Act.

1. Citation

This order is the *Retail Trading Hours (Shire of Katanning) Christmas Variation Order 2014*.

2. Commencement

This order comes into operation as follows—

- (a) clauses 1 and 2—on the day on which this order is published in the *Gazette*;
- (b) the rest of the order—on the day after that day.

3. Variation of retail trading hours

General retail shops in the Katanning local government district are authorised to be open at times when those shops would otherwise be required to be closed—

- (a) on each day specified in the Table; and
- (b) during the hours specified for that day in the Table.

Table

Day	Hours
Saturday 29 November 2014	From 5.00pm until 9.00pm
Sunday 7 December 2014	From 10.00am until 4.00pm
Saturday 13 December 2014	From 5.00pm until 9.00pm
Sunday 14 December 2014	From 10.00am until 4.00pm
Sunday 21 December 2014	From 10.00am until 4.00pm

M. MISCHIN, Minister for Commerce.

CP403***RETAIL TRADING HOURS ACT 1987****RETAIL TRADING HOURS (CITY OF PERTH) VARIATION ORDER 2014**

Made by the Minister for Commerce under section 12E of the Act.

1. Citation

This order is the *Retail Trading Hours (City of Perth) Variation Order 2014*.

2. Commencement

This order comes into operation as follows—

- (a) clauses 1 and 2—on the day on which this order is published in the *Gazette*;
- (b) the rest of the order—on the day after that day.

3. Variation of retail trading hours

General retail shops, other than motor vehicle shops, in the City of Perth local government district, are authorised to be open, at times when those shops would otherwise be required to be closed—

- (a) on the day specified in the Table; and
- (b) during the hours specified for that day in the Table.

Table

Day	Hours
Saturday 6 December 2014	From 6 .00pm until 9.00pm

M. MISCHIN, Minister for Commerce.

CP404***RETAIL TRADING HOURS ACT 1987**

RETAIL TRADING HOURS (CITY OF BUNBURY) CHRISTMAS VARIATION
ORDER (NO. 2) 2014

Made by the Minister for Commerce under section 12E of the Act.

1. Citation

This order is the *Retail Trading Hours (City of Bunbury) Christmas Variation Order (No. 2) 2014*.

2. Commencement

This order comes into operation as follows—

- (a) clauses 1 and 2—on the day on which this order is published in the *Gazette*;
- (b) the rest of the order—on the day after that day.

3. Variation of retail trading hours

General retail shops, other than motor vehicle shops, in the Bunbury local government district are authorised to be open, at times when those shops would otherwise be required to be closed—

- (a) on each day specified in the Table; and
- (b) during the hours specified for that day in the Table.

Table

Day	Hours
Monday 1 December 2014	From 6.00pm until 9.00pm
Tuesday 2 December 2014	From 6.00pm until 9.00pm
Wednesday 3 December 2014	From 6.00pm until 9.00pm
Friday 5 December 2014	From 6.00pm until 9.00pm
Monday 8 December 2014	From 6.00pm until 9.00pm
Tuesday 9 December 2014	From 6.00pm until 9.00pm
Wednesday 10 December 2014	From 6.00pm until 9.00pm
Friday 12 December 2014	From 6.00pm until 9.00pm
Monday 15 December 2014	From 6.00pm until 9.00pm
Tuesday 16 December 2014	From 6.00pm until 9.00pm
Wednesday 17 December 2014	From 6.00pm until 9.00pm
Friday 19 December 2014	From 6.00pm until 9.00pm
Monday 22 December 2014	From 6.00pm until 9.00pm
Tuesday 23 December 2014	From 6.00pm until 9.00pm
Wednesday 24 December 2014	From 6.00pm until 9.00pm
Monday 29 December 2014	From 6.00pm until 9.00pm
Tuesday 30 December 2014	From 6.00pm until 9.00pm
Wednesday 31 December 2014	From 6.00pm until 9.00pm

4. The *Retail Trading Hours (City of Bunbury) Christmas Variation Order 2014* is revoked.

M. MISCHIN, Minister for Commerce.

CP405*

RETAIL TRADING HOURS ACT 1987**RETAIL TRADING HOURS (REGIONAL CHRISTMAS) VARIATION ORDER 2014**

Made by the Minister for Commerce under section 12E of the Act.

1. Citation

This order is the *Retail Trading Hours (Regional Christmas) Variation Order 2014*.

2. Commencement

This order comes into operation as follows—

- (a) clauses 1 and 2—on the day on which this order is published in the *Gazette*;
- (b) the rest of the order—on the day after that day.

3. Variation of retail trading hours—December 2014

(1) During the period commencing on Monday 1 December 2014 and ending on Wednesday 31 December 2014, (both dates inclusive), general retail shops, other than motor vehicle shops, in the Merredin, Gnowangerup, Yalgoo, Kojonup, Bruce Rock, Jerramungup, Lake Grace, Wyalkatchem and Meekatharra local government districts, are authorised to be open at times when those shops would otherwise be required to be closed—

- (a) on each Monday, Tuesday, Wednesday, Thursday and Friday, from 8.00am until 9.00pm; and
- (b) on each Saturday, from 8.00am until 5.00pm; and
- (c) on each Sunday and public holiday, from 11.00am until 5.00pm.

(2) Despite subclause 3(1), this order does not authorise general retail shops in the Merredin, Gnowangerup, Yalgoo, Kojonup, Bruce Rock, Jerramungup, Lake Grace, Wyalkatchem and Meekatharra local government districts to open on Christmas Day, Thursday 25 December 2014.

M. MISCHIN, Minister for Commerce.

CP406*

RETAIL TRADING HOURS ACT 1987**RETAIL TRADING HOURS (BUSSELTON) VARIATION ORDER 2014**

Made by the Minister for Commerce under section 12E of the Act.

1. Citation

This order is the *Retail Trading Hours (Busselton) Variation Order 2014*.

2. Commencement

This order comes into operation as follows—

- (a) clauses 1 and 2—on the day on which this order is published in the *Gazette*;
- (b) the rest of the order—on the day after that day.

3. Variation of retail trading hours—town site of Busselton

(1) During the period commencing on Monday 1 December 2014 and ending on Saturday 31 January 2015, (both dates inclusive), general retail shops, other than motor vehicle shops, in the town site of Busselton, are authorised to be open at times when those shops would otherwise be required to be closed—

- (a) on each Monday, Tuesday, Wednesday, Thursday and Friday, from 8.00am until 9.00pm; and
- (b) on each Saturday, from 8.00am until 9.00pm; and
- (c) on each Sunday and public holiday, from 8.00am until 9.00pm.

(2) Despite subclause 3(1), this order does not authorise general retail shops in the town site of Busselton to open on Christmas Day, Thursday 25 December 2014.

4. Revocation

The *Retail Trading Hours (Busselton) Variation Order 2013* is revoked.

M. MISCHIN, Minister for Commerce.

CP407*

RETAIL TRADING HOURS ACT 1987**RETAIL TRADING HOURS (CITY OF GREATER Geraldton) CHRISTMAS VARIATION ORDER 2014**

Made by the Minister for Commerce under section 12E of the Act.

1. Citation

This order is the *Retail Trading Hours (City of Greater Geraldton) Christmas Variation Order 2014*.

2. Commencement

This order comes into operation as follows—

- (a) clauses 1 and 2—on the day on which this order is published in the *Gazette*;
- (b) the rest of the order—on the day after that day.

3. Variation of retail trading hours

General retail shops, other than motor vehicle shops, in the Greater Geraldton local government district, are authorised to be open at times when those shops would otherwise be required to be closed—

- (a) on each day specified in the Table; and
- (b) during the hours specified for that day in the Table.

Table

Day	Hours
Sunday 14 December 2014	From 10.00am until 4.00pm
Wednesday 17 December 2014	From 6.00pm until 9.00pm
Friday 19 December 2014	From 6.00pm until 9.00pm
Sunday 21 December 2014	From 10.00am until 4.00pm
Monday 22 December 2014	From 6.00pm until 9.00pm
Tuesday 23 December 2014	From 6.00pm until 9.00pm

M. MISCHIN, Minister for Commerce.

CP408***RETAIL TRADING HOURS ACT 1987****RETAIL TRADING HOURS (TOWN OF NARROGIN) CHRISTMAS VARIATION ORDER 2014**

Made by the Minister for Commerce under section 12E of the Act.

1. Citation

This order is the *Retail Trading Hours (Town of Narrogin) Christmas Variation Order 2014*.

2. Commencement

This order comes into operation as follows—

- (a) clauses 1 and 2—on the day on which this order is published in the *Gazette*;
- (b) the rest of the order—on the day after that day.

3. Variation of retail trading hours

General retail shops, other than motor vehicle shops, in the Town of Narrogin local government district are authorised to be open, at times when those shops would otherwise be required to be closed—

- (a) on each day specified in the Table; and
- (b) during the hours specified for that day in the Table.

Table

Day	Hours
Monday 1 December 2014	From 6.00pm until 9.00pm
Tuesday 2 December 2014	From 6.00pm until 9.00pm
Wednesday 3 December 2014	From 6.00pm until 9.00pm
Friday 5 December 2014	From 6.00pm until 9.00pm
Monday 8 December 2014	From 6.00pm until 9.00pm
Tuesday 9 December 2014	From 6.00pm until 9.00pm
Wednesday 10 December 2014	From 6.00pm until 9.00pm
Friday 12 December 2014	From 6.00pm until 9.00pm
Sunday 14 December 2014	From 10.00am until 5.00pm
Monday 15 December 2014	From 6.00pm until 9.00pm
Tuesday 16 December 2014	From 6.00pm until 9.00pm
Wednesday 17 December 2014	From 6.00pm until 9.00pm
Friday 19 December 2014	From 6.00pm until 9.00pm
Sunday 21 December 2014	From 10.00am until 5.00pm
Monday 22 December 2014	From 6.00pm until 9.00pm

Day	Hours
Tuesday 23 December 2014	From 6.00pm until 9.00pm
Wednesday 24 December 2014	From 6.00pm until 9.00pm
Sunday 28 December 2014	From 10.00am until 5.00pm
Monday 29 December 2014	From 6.00pm until 9.00pm
Tuesday 30 December 2014	From 6.00pm until 9.00pm
Wednesday 31 December 2014	From 6.00pm until 9.00pm

M. MISCHIN, Minister for Commerce.

EDUCATION

ED401*

CURTIN UNIVERSITY OF TECHNOLOGY ACT 1966

KALGOORLIE CAMPUS COUNCIL (APPOINTMENT OF MEMBERS) INSTRUMENT 2014

Made by the Minister for Education under section 21M(1)(b) of the *Curtin University of Technology Act 1966*.

Citation

1. This is the *Kalgoorlie Campus Council (Appointment of Members) Instrument 2014*.

Appointment of Members

2. Mr Ronald Stanley Yuryevich is appointed as a member of the Kalgoorlie Campus Council for a third term of office commencing on 1 January 2015 and expiring on 31 December 2017.
3. Mr Emmanuel Christopher Hondros is appointed as a member of the Kalgoorlie Campus Council for a first term of office commencing on 1 January 2015 and expiring on 31 December 2017.

Dated this 13th day of November 2014.

Hon PETER COLLIER MLC, Minister for Education.

FIRE AND EMERGENCY SERVICES

FE401*

BUSH FIRES ACT 1954

TOTAL FIRE BAN DECLARATION

Correspondence No. 12080

Pursuant to powers delegated under the *Bush Fires Act 1954*, the Assistant Commissioner of the Department of Fire and Emergency Services, declared under Section 22A of the *Bush Fires Act 1954*, a total fire ban for 25 November 2014 for the local government districts of—

Greater Geraldton, Chapman Valley, Mingenew, Morawa, Northampton

GRAHAM SWIFT, Assistant Commissioner of the Department of
Fire and Emergency Services, as a sub-delegate
of the Minister under section 16 of the
Fire and Emergency Services Act 1998.

FE402*

FIRE AND EMERGENCY SERVICES ACT 1998

APPROVAL OF FES UNITS

Correspondence No. 04620

Department of Fire and
Emergency Services.

Pursuant to section 18M(1) of the *Fire and Emergency Services Act 1998*, the following groups of persons are approved as FES Units for the purposes of the Act—

Ballidu Volunteer Fire Services Brigade
Beacon Volunteer Fire Services Brigade

Bremer Bay Volunteer Emergency Service Unit
Bruce Rock Volunteer Emergency Service Unit
Bullsbrook Volunteer Fire Services Brigade
Coral Bay Volunteer Emergency Service Unit
Eucla Volunteer Emergency Service Unit
Fitzroy Crossing Volunteer Emergency Service Unit
Hopetoun Volunteer Emergency Service Unit
Hyden Volunteer Emergency Service Unit
Jerramungup Volunteer Emergency Service Unit
Kondinin Volunteer Emergency Service Unit
MAPS-WA
Marble Bar Volunteer Emergency Service Unit
Morawa Volunteer Fire Services Brigade
Northampton Volunteer Fire Services Brigade
Onslow Volunteer Emergency Service Unit
Port Hedland Volunteer Fire Services Brigade
Tambellup Volunteer Emergency Service Unit
Tammin Volunteer Fire Services Brigade
Trayning Volunteer Emergency Service Unit
Waroona Volunteer Fire Services Brigade
Wyndham Volunteer Emergency Service Unit
York Volunteer Emergency Service Unit

All previous authorisations made under section 18M(1) of the Act are hereby revoked.

WAYNE GREGSON APM, FES Commissioner.

19 November 2014.

FISHERIES

FI401*

FISH RESOURCES MANAGEMENT ACT 1994

GRANT OF AQUACULTURE LEASE

FD [653/12-04]

I, Ken Baston, Minister for Fisheries, Western Australia, hereby give notice under Section 97(9) of the *Fish Resources Management Act 1994* that an Aquaculture Lease was issued to Ocean Grown Abalone Pty Ltd, under Section 97(1) of the *Fish Resources Management Act 1994*. I declare that this lease was granted for a term of 21 years.

Dated the 19th day of November 2014

Hon KEN BASTON MLC, Minister for Fisheries.

LANDS

LA401*

TRANSFER OF LAND ACT 1893

APPLICATION M724740

Take notice that Brian Anthony St Jack and June Lynette St Jack both of 3 Good Street, Bayonet Head have made application to be registered under the Act as proprietor of an estate in fee simple in possession in the land situated at 4 Meyers Way, Albany being part of Albany Sub Lot 48 containing 967 square metres being the whole of the Land comprised in Memorial Book XXX No. 13.

All persons other than the applicant claiming any estate right title or interest in the above land and desiring to object to the application are required to lodge with Landgate on or before 19 December 2014 a caveat forbidding the land being brought under the operation of the Act.

JEAN VILLANI, Registrar of Titles.

LOCAL GOVERNMENT

LG401***BUSH FIRES ACT 1954***Shire of Serpentine Jarrahdale***SUSPENSION OF PROHIBITED BURNING PERIOD AND
EXTENSION OF RESTRICTED BURNING PERIOD**

Notice is hereby given that in accordance with the *Bush Fires Act 1954* the prohibited burning period has been suspended from 1 December 2014 to midnight on 14 December 2014 and the restricted burning period has been extended to midnight on 14 December 2014 within the Shire of Serpentine Jarrahdale. The restricted burning period is extended to that date for Fire Brigades and Department of Parks and Wildlife (DPAW).

The purpose of this extension is to allow for the completion of fuel reduction burns by the Fire Brigades and Department of Parks and Wildlife (DPAW).

Should you have any enquiries relating to this please contact the Shire of Serpentine Jarrahdale Council office on 9526 1111?

RICHARD GORBUNOW, Chief Executive Officer,
Shire of Serpentine Jarrahdale.

MINERALS AND PETROLEUM

MP401***MINING ACT 1978****FORFEITURE**

Department of Mines and Petroleum,
East Perth WA 6004.

I hereby declare in accordance with the provisions of Section 96A of the *Mining Act 1978* that the undermentioned exploration licence is forfeited for breach of covenant, being non-payment of rent.

Hon BILL MARMION MLA, Minister for Mines and Petroleum; Housing.

Number	Holder	Mineral Field
	Exploration Licence	
77/2051	Parry, Brenton Anthony	North Coolgardie

MP402***MINING ACT 1978****APPLICATION FOR AN ORDER FOR FORFEITURE**

Department of Mines and Petroleum,
Kalgoorlie WA 6430.

In accordance with Regulation 49(2)(c) of the *Mining Regulations 1981*, notice is hereby given that the following licences are liable for forfeiture under the provision of Section 96(1)(a) of the *Mining Act 1978* for non payment of rent.

T. HALL, Warden.

To be heard by the Warden at Kalgoorlie on 16 January 2015.

BROAD ARROW MINERAL FIELD**Prospecting Licences**

P 24/4610	Brown, Hugh O'donnell
	Brown, Abbie Lee
	Williams, Frank

MP403***MINING ACT 1978****APPLICATION FOR AN ORDER FOR FORFEITURE**

Department of Mines and Petroleum,
Kalgoorlie WA 6430.

In accordance with Regulation 49(2)(c) of the *Mining Regulations 1981*, notice is hereby given that the following licences are liable to forfeiture under the provision of Section 96(1)(a) of the *Mining Act 1978* for breach of covenant, being failure to comply with the prescribed expenditure conditions and/or non-compliance with the reporting provisions.

T. HALL, Warden.

To be heard by the Warden at Kalgoorlie on 16 January 2015.

EAST COOLGARDIE MINERAL FIELD**Prospecting Licences**

P 26/3918 Darwin Dolomite Pty Ltd

P 26/3919 Darwin Dolomite Pty Ltd

NORTH COOLGARDIE MINERAL FIELD**Prospecting Licence**

P 30/1074 Carnegie Gold Pty Ltd

MP404***MINING ACT 1978****APPLICATION FOR AN ORDER FOR FORFEITURE**

Department of Mines and Petroleum,
Kalgoorlie WA 6430.

In accordance with Regulation 49(2)(c) of the *Mining Regulations 1981*, notice is hereby given that the following licences are liable to forfeiture under the provision of Section 96(1)(a) of the *Mining Act 1978* for breach of covenant, being failure to comply with the prescribed expenditure conditions and/or non-compliance with the reporting provisions.

T. HALL, Warden.

To be heard by the Warden at Kalgoorlie on 16 January 2015.

NORTH COOLGARDIE MINERAL FIELD**Prospecting Licence**

P 31/1788 Yarri Battery and Resources Pty Ltd

MP405***MINING ACT 1978****APPLICATION FOR AN ORDER FOR FORFEITURE**

Department of Mines and Petroleum,
Mt. Magnet WA 6638.

In accordance with Regulation 49(2)(c) of the *Mining Regulations 1981*, notice is hereby given that the following licences are liable to forfeiture under the provision of Section 96(1)(a) of the *Mining Act 1978* for breach of covenant, being failure to comply with the prescribed expenditure conditions and/or non-compliance with the reporting provisions.

R. YOUNG, Warden.

To be heard by the Warden at Mt. Magnet on 22 January 2015.

EAST MURCHISON MINERAL FIELD

Prospecting Licences

P 57/1191	OZ Youanmi Gold Pty Ltd
P 57/1194	OZ Youanmi Gold Pty Ltd
P 57/1195	OZ Youanmi Gold Pty Ltd
P 57/1196	OZ Youanmi Gold Pty Ltd
P 57/1197	OZ Youanmi Gold Pty Ltd
P 57/1199	OZ Youanmi Gold Pty Ltd
P 57/1200	OZ Youanmi Gold Pty Ltd

MURCHISON MINERAL FIELD

Prospecting Licence

P 21/701-I	Mainland Gold Pty Ltd
------------	-----------------------

MP406*

MINING ACT 1978

APPLICATION FOR AN ORDER FOR FORFEITURE

Department of Mines and Petroleum,
Meekatharra WA 6642.

In accordance with Regulation 49(2)(c) of the *Mining Regulations 1981*, notice is hereby given that the following licences are liable for forfeiture under the provision of Section 96(1)(a) of the *Mining Act 1978* for non payment of rent.

R. YOUNG, Warden.

To be heard by the Warden at Meekatharra on 21 January 2015.

MURCHISON MINERAL FIELD

Prospecting Licence

P 51/2551	Caldwell, Luke Mcquarie
-----------	-------------------------

MP407*

MINING ACT 1978

APPLICATION FOR AN ORDER FOR FORFEITURE

Department of Mines and Petroleum,
Meekatharra WA 6642.

In accordance with Regulation 49(2)(c) of the *Mining Regulations 1981*, notice is hereby given that the following licences are liable to forfeiture under the provision of Section 96(1)(a) of the *Mining Act 1978* for breach of covenant, being failure to comply with the prescribed expenditure conditions and/or non-compliance with the reporting provisions.

R. YOUNG, Warden.

To be heard by the Warden at Meekatharra on 21 January 2015.

MURCHISON MINERAL FIELD

Prospecting Licences

P 51/2805	Thorns, Raymond Arthur
	Sawtell, Neville Raymond
P 51/2806	Sawtell, Neville Raymond
	Thorns, Raymond Arthur

MP408***MINING ACT 1978****INSTRUMENT OF EXEMPTION—EXTENSION OF PERIOD**

The Minister for Mines and Petroleum pursuant to the powers conferred on him by section 19 of the *Mining Act 1978*, hereby further extends the exemption granted on 26 November 2008 for that area of land described in the schedule hereunder, not being private land or land that is the subject of a mining tenement or application therefor from Divisions 1 to 5 of Part IV of the *Mining Act 1978*.

The exemption is extended for a period of two (2) years from 26 November 2014 to 25 November 2016.

DESCRIPTION:

Land designated S19/314 in Tengraph. A geospatial description is filed on Department of Mines and Petroleum File No. A0730/200302 from Folio 65 onwards.

LOCALITY: Point Torment

AREA: 15,696.45 Hectares

Dated at Perth this 20th day of November 2014.

Hon BILL MARMION MLA, Minister for Mines and Petroleum.

MP409***MINING ACT 1978****INSTRUMENT OF EXEMPTION OF LAND****Extension of Term**

The Minister for Mines and Petroleum pursuant to the powers conferred on him by Section 19 of the *Mining Act 1978*, hereby extends the term of the instrument of exemption of land designated S19/172 that was first declared on the 8 November 2002 and gazetted on 15 November 2002, for a further two year period expiring on 7 November 2016.

Description of Land

Land designated S19/172 in the Tengraph electronic plan of the Department of Mines and Petroleum. A geospatial description is filed in the Department of Mines and Petroleum file number M70/0999, document number 3236588.

Locality

Shire of Serpentine-Jarrahdale.

Dated at Perth this 18th day of November 2014.

Hon BILL MARMION MLA, Minister for Mines and Petroleum.

MP410***MINING ACT 1978****INSTRUMENT OF EXEMPTION OF LAND****Extension of Term**

The Minister responsible for the *Mining Act 1978*, pursuant to the powers conferred on him by Section 19 of the *Mining Act 1978*, hereby extends the term of the exemption of land that was exempted on 24 November 2010 for a further period of 2 years to 23 November 2016.

Description of Land

Land designated Section 19/322 in the Tengraph electronic plan of the Department of Mines and Petroleum. A geospatial description is filed at Document ID 3237631 of the Department of Mines and Petroleum File No E59/1059.

Area of Land

10715.18 hectares

Dated at Perth this 17th day of November 2014.

Hon BILL MARMION MLA, Minister for Mines and Petroleum; Housing.

PLANNING

PL401*

PLANNING AND DEVELOPMENT ACT 2005
APPROVED LOCAL PLANNING SCHEME AMENDMENT

City of Wanneroo

Town Planning Scheme No. 2—Amendment No. 131

Ref: TPS/1167

It is hereby notified for public information, in accordance with section 87 of the *Planning and Development Act 2005* that the Minister for Planning approved the City of Wanneroo local planning scheme amendment on 17 November 2014 for the purpose of—

1. Recoding of Lots 141 (no. 14), 142 (no. 15) and Lot 143 (no. 7) Clyde Court, Wanneroo from Residential R5 to R20

T. ROBERTS JP, Mayor.
D. SIMMS, Chief Executive Officer.

PL403*

PLANNING AND DEVELOPMENT ACT 2005
PEEL REGION SCHEME
RESOLUTION UNDER CLAUSE 13 AND AMENDMENT OF
SHIRE OF MURRAY TOWN PLANNING SCHEME NO. 4

Lot 803 North Yunderup Road, North Yunderup

Amendment 027/13

File No. RLS/0196

Notice is hereby given that, pursuant to Clause 13 of the Peel Region Scheme, the Western Australian Planning Commission (WAPC) resolved, on 25 November 2014, to transfer land from the Urban Deferred zone to the Urban zone, as shown on WAPC Plan 4.1612.

The WAPC also resolved to amend the Shire of Murray Town Planning Scheme No. 4, to include the land shown on WAPC Plan 4.1612 within the Residential Development zone, pursuant to section 126(3) of the *Planning and Development Act 2005*.

The amendments to the Peel Region Scheme and the Shire of Murray Town Planning Scheme No. 4 are effective from the date of publication of this notice in the *Government Gazette*.

The plan of the Peel Region Scheme amendment may be viewed at the following locations—

- the offices of the Western Australian Planning Commission, 140 William Street, Perth;
- the Department of Planning's Peel region office, Pinjarra Road, Mandurah;
- the J S Battye Library, Level 3 Alexander Library Building, Perth Cultural Centre; and
- the municipal office of the Shire of Murray.

TIM HILLYARD, Secretary,
Western Australian Planning Commission.

PL402*

PLANNING AND DEVELOPMENT ACT 2005
APPROVED LOCAL PLANNING SCHEME AMENDMENT

City of Belmont

Town Planning Scheme No. 15—Amendment No. 5

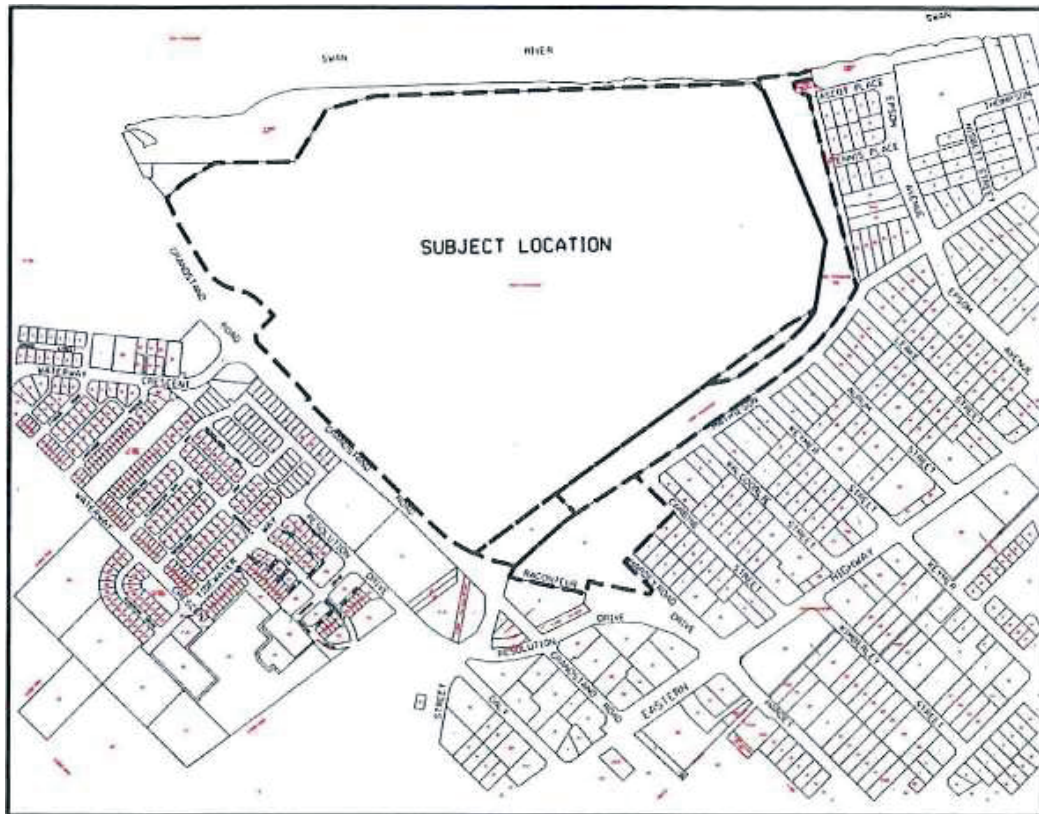
Ref: TPS/1350

It is hereby notified for public information, in accordance with section 87 of the *Planning and Development Act 2005* that the Minister for Planning approved the City of Belmont local planning scheme amendment on 17 November 2014 for the purpose of—

- (a) Amending Table I (Use Class Table) of Local Planning Scheme No 15 in relation to the following use—

ZONES										
USE CLASSES	Residential	Town Centre	Commercial	Mixed Use	Mixed Business	Industrial	Service Station	Places of Public Assembly	Residential and Stables	Special Development Precinct
Child Family Day Care	P	X	X	D	D	X	X	D	D	D

- (b) Amending the scheme map to remove the underlying zoning of 'Residential' from all Special Development Precincts and creating a new legend delineation for 'Special Development Precinct' on the LPS15 Scheme Map under Local Scheme Zones.
- (c) Amending Clause 5.18.1 (c) to clarify the City's development standards, as follows—
'The vehicle is parked and/or cleaned or serviced entirely on the subject lot and is to be located directly behind the front of the main building on the primary and/or secondary street frontage'.
- (d) Amending Schedule 2 to include the use of 'Horse Sales' and 'Stables' as Additional Use 18.



- (e) Amending the scheme Map to rezone Lot 401 (20) Gladstone Road, Rivervale as Residential with a density coding of 'R20/R60'.

P. MARKS, Mayor.
S. COLE, Chief Executive Officer.

PREMIER AND CABINET

PR401*

INTERPRETATION ACT 1984 MINISTERIAL ACTING ARRANGEMENTS

It is hereby notified for public information that the Governor, in accordance with Section 52(1)(b) of the *Interpretation Act 1984* has approved the following temporary appointment—

Hon J. M. Francis MLA to act temporarily in the office of Minister for Mental Health; Disability Services; Child Protection in the absence of the Hon H. M. Morton MLC for the period 17 January to 1 February 2015 (both dates inclusive).

PETER CONRAN, Director General,
Department of the Premier and Cabinet.

PR402*

INTERPRETATION ACT 1984
MINISTERIAL ACTING ARRANGEMENTS

It is hereby notified for public information that the Governor, in accordance with Section 52(1)(b) of the *Interpretation Act 1984* has approved the following temporary appointment—

Hon K. C. Baston MLC to act temporarily in the office of Minister for Emergency Services; Corrective Services; Small Business; Veterans in the absence of the Hon J. M. Francis MLA for the period 24 to 30 November 2014 (both dates inclusive).

PETER CONRAN, Director General,
 Department of the Premier and Cabinet.

PR403*

INTERPRETATION ACT 1984
MINISTERIAL ACTING ARRANGEMENTS

It is hereby notified for public information that the Governor in accordance with Section 52(1)(b) of the *Interpretation Act 1984* has approved the following temporary appointment—

Hon A. P. Jacob MLA to act temporarily in the office of Attorney General; Minister for Commerce in the absence of the Hon M. Mischin MLC for the period 17 December 2014 to 6 January 2015 (both dates inclusive).

PETER CONRAN, Director General,
 Department of the Premier and Cabinet.

TRAINING

TA401*

VOCATIONAL EDUCATION AND TRAINING ACT 1996

CLASSIFICATION OF PRESCRIBED VOCATIONAL EDUCATION AND TRAINING QUALIFICATIONS

Amendment to Western Australian *Government Gazette* 2009/225

Under the *Vocational Education and Training Act 1996* (the VET Act) section 60C, I, the Minister for Training and Workforce Development hereby—

- revoke the previously gazetted classification of prescribed vocational education and training qualification as listed below—

Class A qualification

No.	Qualification	Conditions	Training contract requirements				
			Title of apprentice under training contract	Nominal period (months) full time	Part time	School based	Other requirements
34.1	MEM30605 Certificate III in Jewellery Manufacture		Apprentice	48	Y	Y	

and

- replace with the following prescribed vocational education and training qualification(s)—

Class B qualification

No.	Qualification	Conditions	Training Contract Requirements					
			Title on contract	Nominal duration (months)	Part time	School based	Other requirements	Apprenticeship Title
34.2	MEM30605 Certificate III in Jewellery Manufacture		Apprentice	48	Y	Y		JEWELLER

Dated: 23 November 2014.

Dr KIM HAMES MLA, Deputy Premier,
 Minister for Training and Workforce Development.

DECEASED ESTATES

ZX401**TRUSTEES ACT 1962****DECEASED ESTATES**

Notice to Creditors and Claimants

Ephie Roburta Bevan, late of McNamara Lodge RAAFA Estate, 41 Portrush Parade, Meadow Springs, Western Australia, deceased.

Creditors and other persons having claims (to which Section 63 of the *Trustees Act 1962*, relates) in respect of the estate of the deceased, who died on 18 June 2014, are required by the trustee of the late Ephie Roburta Bevan of care of Philip Wyatt Lawyer, PO Box 1026, Albany WA 6331 to send particulars of their claims to them within one (1) month from the date of publication of this notice, after which date the trustee may convey or distribute the assets, having regard only to the claims of which it then has notice.

Dated this 19th day of November 2014.

PHILIP WYATT LAWYER.

ZX402**TRUSTEES ACT 1962****DECEASED ESTATES**

Notice to Creditors and Claimants

Any creditors having claims on the estate of the late Platon Pantos of 37 Hospital Avenue, Manjimup, Western Australia, deceased 2 June 2014, are required to send particulars of their claims to Lazo Milentis, executor, c/- Lynn & Brown Lawyers, PO Box 1114, Morley WA 6943 by 29 December 2014, after which date the executor may distribute the assets having regard only to the claims of which they then have notice.

ZX403**TRUSTEES ACT 1962****DECEASED ESTATES**

Notice to Creditors and Claimants

Any creditors having claims on the estate of the late Adolf Franz Higgs of 4 Byfleet Street, Morley, Western Australia, deceased 16 July 2014, are required to send particulars of their claims to Aroha Celia Higgs, executor, c/- Lynn & Brown Lawyers, PO Box 1114, Morley WA 6943 by 29 December 2014, after which date the executor may distribute the assets having regard only to the claims of which they then have notice.

ZX404**TRUSTEES ACT 1962****DECEASED ESTATES**

Notice to Creditors and Claimants

Any creditors having claims on the estate of the late David John Greenhalgh of 59 Colne Way, Girrawheen in the State of Western Australia, deceased 4 March 2013, are required to send particulars of their claims to Margaret Greenhalgh, administrator, c/- Lynn & Brown Lawyers, PO Box 1114, Morley WA 6943 by 29 December 2014, after which date the administrator may distribute the assets having regard only to the claims of which they then have notice.

ZX405**TRUSTEES ACT 1962****DECEASED ESTATES**

Notice to Creditors and Claimants

Milton David Morris, late of 3 Alex Miles Lodge, 1 Ernest Drive, Beverley in the State of Western Australia and formerly of 129 Forrest Street, Beverley aforesaid, Retired, Date of Death: 25 September 2014.

Creditors and other persons having claims (to which Section 63 of the *Trustees Act 1962*, relates) in respect of the Estates of the abovementioned deceased person are required by the personal representative, Maxine Anne Watts to send particulars of their claims to the personal representative care of Mayberry, Hammond & Co, 85 Fitzgerald Street, Northam within one (1) calendar month from the date of publication of this Notice, at the expiration of which time the personal representative may convey or distribute the assets having regard only to the claims of which notice has been given.

Dated this 21st day of November 2014.

MAYBERRY, HAMMOND & CO,
85 Fitzgerald Street, Northam,
Solicitors for the Executor.

ZX406***TRUSTEES ACT 1962****DECEASED ESTATES**

Notice to Creditors and Claimants

Creditors and other persons having claims (to which Section 63 of the *Trustees Act 1962*, relates) in respect of the estates of the undermentioned deceased persons, are required to send particulars of their claim to Australian Executor Trustees Limited of Level 28, 152-158 St George's Terrace Perth on or before the expiration of one month from the date of publication of this notice, after which date the Company may convey or distribute the assets, having regard only to the claims of which it then has notice.

- | | |
|---------|---|
| Gfeller | Eileen Myrtle of Lady McCusker Village, 27 Beddi Road, Duncraig, Married Woman, died on 15 July 2014. |
| Powers | Fay Jeanette of 19 Rannoch Circle, Hamersley, Widow, died on 17 September 2014. |
| Woods | Patrick Arthur Appleton of 90/289 Sydney Road, Gnangara, Retired Radio Operator, died on 26 September 2014. |
| Fairall | Michael Edward of McKail (Albany), Prison Officer, died on 16 October 2014. |
| Leaman | Patricia of Aegis Woodlake, 40 Woodlake Retreat, Kingsley, formerly of 76 Cockman Road, Greenwood, died on 5 November 2014. |
| Worsley | Eleanor of Braemar Village, 24/32 Charsley Street, Willagee, Widow, died on 7 October 2014. |
| Mann | Theresa Carmel of 30 Yorrell Way, Merredin, formerly of 100 Hampton Road, Fremantle, died on 12 September 2014. |

Dated: 25 November 2014.

MICHAEL SATIE, Manager Estate and Trust Administration.

ZX407**TRUSTEES ACT 1962****DECEASED ESTATES**

Notice to Creditors and Claimants

William Thatcher (also known as Charles Thomas Howe), late of Mosman Park Nursing Home, 57 Palmerston Street, Mosman Park, Western Australia, Retired Serviceman, deceased.

Creditors and other persons having claims (to which Section 63 of the *Trustees Act 1962*, relates) in respect of the estate of the deceased who died on 18 November 2013 are required by the Administrator C/- McFarlane Lawyers, Suite A, 1139 Hay Street, West Perth, WA 6005 to send particulars of their claim to them by 14 January 2015 after which date the Administrator may convey or distribute the assets having regard only to the claims of which it then has notice.

ZX408

TRUSTEES ACT 1962**DECEASED ESTATES**

Notice to Creditors and Claimants

Geoffrey Eric Oakley, late of 5 Lealt Place, Ardross, Western Australia, Business Proprietor, deceased.

Creditors and other persons having claims (to which Section 63 of the *Trustees Act 1962*, relates) in respect of the estate of the deceased who died on 7 October 2014 are required by the Trustee, Equity Trustees Wealth Services Limited ACN 006 132 332 of Level 2, 575 Bourke Street, Melbourne, VIC 3000 to send particulars of their claim to them by 14 January 2015 after which date the Trustee may convey or distribute the assets having regard only to the claims of which it then has notice.

ZX409

TRUSTEES ACT 1962**DECEASED ESTATES**

Notice to Creditors and Claimants

Thea Ninette Williams, late of 31 Woolwich Street, West Leederville in the State of Western Australia, Teacher, deceased.

Creditors and other persons having claims (to which Section 63 of the *Trustees Act 1962*, relates) in respect of the estate of the deceased, who died on either 13 September 2014 or 14 September 2014 interstate, are required by the Trustee, Helen Margaret Williams c/- Beaufort Legal, Suite 9, 250 Beaufort Street, Perth in the State of Western Australia to send particulars of their claims to her within 30 days of this notice, after which date the Trustee may convey or distribute the assets, having regard only to the claims of which she then has notice.

ZX410*

TRUSTEES ACT 1962**DECEASED ESTATES**

Notice to Creditors and Claimants

Creditors and other persons having claims (to which Section 63 of the *Trustees Act 1962*, relates) in respect of the Estates of the undermentioned deceased persons are required to send particulars of their claims to me on or before 28 December 2014 after which date I may convey or distribute the assets, having regard only to the claims of which I then have notice.

Clough, Albert, late of Unit 2 32 Axon Street, Subiaco, died 11.11.1999 (DE33118834 EM16)

Franke, Ellen, late of 43 Constitution Street, South Bunbury, died 19.10.2014 (DE19642272 EM35)

Fryters, Cornelis, late of 32a Chadstone Road, Craigie, died 24.10.2014 (DE19970070 EM13)

Hall, Leo, late of Craiglea Park Nursing Home, 38 Alday Street, St James, died 24.10.2014 (DE19933579 EM36)

Kubitza, Johannes, late of 5 Raymond Street, Kalamunda, died 16.10.2008 (DE33107882 EM213)

Mellar, Sheila Mary, late of Geraldton Nursing Home, 20 Milford Street, Geraldton, died 2.08.2014 (DE19843346 EM110)

Morin, John Louis, late of 40b Searle Road, Ardross, died 30.03.2014 (DE33116204 EM32)

Pennington, John Guest, late of Unit 13 99 Simpson Avenue, Rockingham, died 1.11.2014 (DE19830502 EM32)

Schreurs, Gloria Elsie Rose, late of 2 Arreton Close, Willetton, died 24.09.2014 (DE19760060 EM22)

BRIAN ROCHE, Public Trustee,
553 Hay Street, Perth WA 6000.
Telephone: 1300 746 212

ZX411*

PUBLIC TRUSTEE ACT 1941

ADMINISTERING OF ESTATES

Notice is hereby given that pursuant to Section 14 of the *Public Trustee Act 1941* and amendments the Public Trustee has elected to administer the estates of the undermentioned deceased persons.

Dated at Perth the 28th day of November 2014.

BRIAN ROCHE, Public Trustee,
553 Hay Street, Perth WA 6000.
Telephone: 1300 746 212.

Name of Deceased	Address	Date of Death	Date Election Filed
Betty Maude Brown DE33112596 EM26	5/219 Midland Road, Hazelmere	13 March 2014	24 November 2014
Ronald George Harrison DE20001516 EM36	1F Swan Road, Attadale	13 July 2014	24 November 2014
Alexander Yastrebov DE19993027 EM26	Late of 5/32 Fisk Street, Westcourt Qld formerly of 4 Gunby Street, Maddington	5 October 2013	12 November 2014

WANTED URGENTLY

GOVERNMENT GAZETTES

State Law Publisher urgently require copies of old *Government Gazettes* for scanning and archiving on our website.

Over the years we have received various donations to enable us to continue with this project, however we now require the years 1881, and 1877 to 1840 to complete the project.

Our aim is to scan every *Government Gazette* published since the 1840's. They will be freely available on our website for clients to access.

If you have any old single editions or bound volumes and are willing to donate them for this project we would be extremely grateful.

Please contact **Peter Telford** on **6552 6010** if you require further information or would like us to organise to collect your old gazettes.

STATE LAW PUBLISHER

SUBSCRIPTION RATES FOR 2015

All subscriptions are for the period from 1 January to 31 December 2015. Subject to certain limitations, refunds may be allowed if a subscription is cancelled during the year. The prices quoted include GST where applicable and postage by surface mail unless stated otherwise.

GOVERNMENT GAZETTE

General *Government Gazettes* are published on Tuesday and Friday of each week, unless disrupted by public holidays or unforeseen circumstances.

Special *Government Gazettes* are published periodically on any day.

All Gazettes

Within WA	\$ 1,117.00
Interstate	1,136.00

Bound Volumes of full year 1,385.00

INDUSTRIAL GAZETTE

Industrial Gazette is published monthly.

Within WA	\$ 536.00
Interstate	638.00

HANSARD

Hansard is printed and distributed weekly during parliamentary sessions.

Within WA	\$ 1,059.00
Interstate	1,295.00

Bound Volumes of Hansard

Within WA	1,043.00
Interstate	1,059.00

STATUTES

Bound Statutes

Bound volumes are posted during March of the following year.

	\$
Within WA.....	377.00
Interstate	420.00
Overseas	488.00
Half Calf Bound Statutes	1,041.00

Loose Statutes

Statutes are posted weekly as they become available.

	\$
Within WA.....	405.00
Interstate	420.00

Sessional Bills

Bills are posted weekly as they become available.

	\$
Within WA	557.00
Interstate	586.00

CLAIMS FOR MISSING SUBSCRIPTION ITEMS

For a claim to be recognised as valid, written notification must be lodged at State Law Publisher, 10 William Street, Perth 6000 within 28 days of publication of the missing item.

Claims lodged after this period will not be recognised and will attract payment in full.

Please debit my:

☐

Visa Card

☐

MasterCard

Card Number:

Expiry date of card:...../.....

Name of card holder:.....